

Response ID	5664353
Date of Contribution	23/04/2024 12:35:25 PM
First Name	Sue
Last Name	Lund

Your contact details

Email Address	sue@planetaryaccounting.org
Post Code	0000
Are you submitting on behalf of an organisation, association or community group?	Yes, I'm submitting on behalf of an organisation, association or community group
Name of organisation, association or community group	Planetary Accounting Network

Supporting your submission

Anyone can make a submission. All submissions will be considered by Council in accordance with our submissions policy before they make a decision.

You can upload documents to support your submission. Please make sure each page includes your name. The maximum file size is 200MB	https://s3-ap-southeast-2.amazonaws.com/ehq-production-australia/45f2387a9d93f7a5d4cba984790e84aa407fdce3/original/1713743712/d9bfe7d2de1dfdeaa049ab29f651cfff_ECan_Submission_14_April_2024.pdf?1713743712 See Upload File 1 section.
You can upload documents to support your submission. Please make sure each page includes your name. The maximum file size is 200MB	See Upload File 2 section.
If you would like to give feedback via a video, add a link to YouTube or Dropbox file below	See Upload File 3 section.
If you wish, you can also come to talk to Council about your submission at public sessions that are known as 'hearings'. Do you want to speak to Council about your submission at the Long-Term Plan hearings?	Yes
Please provide your phone number so we can contact you to schedule a hearing time	No number provided
Which age category are you in?	

Environmental Regulation and Protection

We are Canterbury's environmental regulator. We are responsible for managing natural resources including air, soil, water and land. We work with mana whenua, stakeholders, and communities to promote the sustainable management of these natural resources, and protect and enhance the health of our natural environment.

Question	Answer
We are proposing three options for funding our Environmental Regulation and Protection services. Please indicate which option you prefer	
Tell us more about the option you chose. What would you support and what would you suggest we change or do differently for Environmental Regulation and Protection?	

Targeted rate for Christchurch district biodiversity

We are proposing to fund more work to improve indigenous biodiversity outcomes in Christchurch and Banks Peninsula through a new targeted rate to properties in those areas.

This would be in addition to the work already funded through the existing regional rate. \$1million for this additional work is already included in Council's preferred option for Environmental Regulation and Protection services.

This equates to rates of 72 cents per year per \$100,000 of your property value.

If there is sufficient support for this new targeted rate, Council could decide to include this targeted rate regardless of whether Option 2 is ultimately accepted.

Question	Answer
Do you support this new biodiversity targeted rate?	
Tell us more about why you support / don't support this biodiversity rate?	

Community Preparedness and Response to Hazards

We support the community to be prepared for, and be able to respond to hazards, and to be prepared for changes in the natural environment.

Question	Answer
We are proposing three options for funding our Community Preparedness and Response to Hazards services. Please indicate which option you prefer	
Tell us more about the option you chose. What would you support and what would you suggest we change or do differently for Community Preparedness and Response to Hazards?	

Targeted rate for Selwyn district for river resilience

We are proposing a trial in the Selwyn district to carry out additional flood and river resilience activities.

Existing schemes do not change.

The cost for this additional work will be through a targeted rate to all properties in the Selwyn district. \$200,000 for this additional work is already included in Council's preferred option for Community Preparedness and Response to Hazards. This equates to rates of \$7.08 per rate-paying property in Selwyn district in 2024/25 (Year 1).

Question	Answer
Do you support a new river targeted rate in Selwyn?	
Tell us more about why you support / don't support this river rate	

Public Transport

We provide urban bus services within the Canterbury region, and ferry services in Christchurch.

We do this because public transport increases accessibility, connects communities and contributes to significant environmental benefits such as reduced greenhouse gas emissions, better air quality, and improved travel times across the transport network.

Question	Answer
We are proposing three options to fund Public Transport services. Please indicate which option you prefer	
Tell us more about the option you chose. What would you support and what would you suggest we change or do differently for Public Transport?	

Fees and Charges schedule

In order to make our consent-related costs more transparent, we are proposing a move towards a fixed-fee approach for some of our consenting work.

There are a number of benefits to this for our community including certainty of invoice amount, more timely invoicing, removing the need for a deposit and standard site visit costs will be built in.

Question	Answer
Do you agree with this new fees and charges proposal?	
Tell us more about why you support / don't support this approach. What would you support and what would you suggest we change or do differently?	

Uniform Annual General Charge / Uniform Annual Charge (UAGC/UAC)

UAGC/UAC are flat charges that are applied at the same amount for every property, no matter the value of your property. We currently charge ratepayers \$54.49 (in the 2023/24 year) for a range of services funded by UAGC or targeted UAC. This income represents approximately 8% of the total amount of money we collect from rates.

Council's preferred option is to set the UAGC and UAC charges to approximately 8% of total rates each year of the Long-Term Plan. This means as rates rise in the future, the value of the UAGC/UAC component of rates will also rise.

Question	Answer
Which Uniform Annual General Charge/Uniform Annual Charge	

(UAGC/UAC) rate increase would you support?	
Tell us more about the option you chose. What would you suggest we change or do differently?	

Strategies and policies

Question	Answer
We'd value your feedback on any of these strategies and policies	
Tell us what you think about the Financial Strategy	
Tell us what you think about the Revenue and Financing Policy	
Tell us what you think about the 30-Year Infrastructure Strategy 2024-54	
Tell us what you think about the Engagement, Significance and Māori Participation Policy	

Upload File 1.

You can upload documents to support your submission. Please make sure each page includes your name. The maximum file size is 200MB. If Image uploaded, will be shown below, if document it will be saved separately to this PDF.



No Image uploaded

Upload File 2.

You can upload documents to support your submission. Please make sure each page includes your name. The maximum file size is 200MB. If Image uploaded, will be shown below, if document it will be saved separately to this PDF.



No Image uploaded

Upload File 3.

You can upload documents to support your submission. Please make sure each page includes your name. The maximum file size is 200MB. If Image uploaded, will be shown below, if document it will be saved separately to this PDF.



No Image uploaded



Submission:

Environment Canterbury

Long Term Plan 2024 - 2034

14 April 2024

At PAN our mission is to help people, businesses, and governments to operate within the planet's limits - because we believe that living well requires a healthy planet.

Submission

We recommend Environment Canterbury uses Planetary Accounting to measure and report its progress against its strategy and community outcomes in one central dashboard combining system-wide reporting and outcome focussed decision making and measurements.

Why?

Planetary Accounting aligns with all five of Environment Canterbury Long-Term Aspirations, particularly *Enable improved water and land use outcomes*, *Accelerate regeneration of the natural environment* and *Champion safe, reliable multi-modal transport choices*.

It is also aligned to the four community wellbeings and Te Tūtei o Te Hau - Surveillance of the Wind (particularly Hā Tuamātangi Our Last Breath Climate Change ceiling). It can be used to bring the various Outcome Measures linked to your strategic aspirations into a central set of indicators, each with a target aligned to local and global environmental limits, such as the Planetary Boundaries. It can also align with metrics developed as part of the Environment Canterbury Climate Action Plan (in development).

Planetary Accounting is used to quantify the impacts of a region. It translates critical global environmental limits (the Planetary Boundaries) into an accountancy framework which compares impacts to these limits. It aligns with other global frameworks such as the Sustainable Development Goals, Doughnut Economics and Nature Related Financial Disclosures.

It brings existing metrics in your strategy into a central set of indicators to help track progress of the strategy as a whole and at a glance. It distills various reporting metrics into core indicators and evaluates impacts of various decisions from strategies, policies, projects.

Planetary Accounting is a scientifically peer reviewed framework that translates mission-critical environmental limits (called Planetary Boundaries) to local scales to enable science-based decision making, beyond carbon, at any scale.

A Planetary Accounting approach derisks planning and decision making as it defines how far and how fast the region needs to go to align with environmental limits. It also provides a mechanism to support multi-criteria decision making, balancing sometimes conflicting environmental goals (e.g. carbon vs water vs biodiversity).

The output is holistic impactful measurement and reporting for the community and a decision-making framework supported by science. This is a pragmatic leading solution delivering value for money, improving effectiveness of systems and supporting Environment Canterbury's regional leadership role.

How do we work with you?

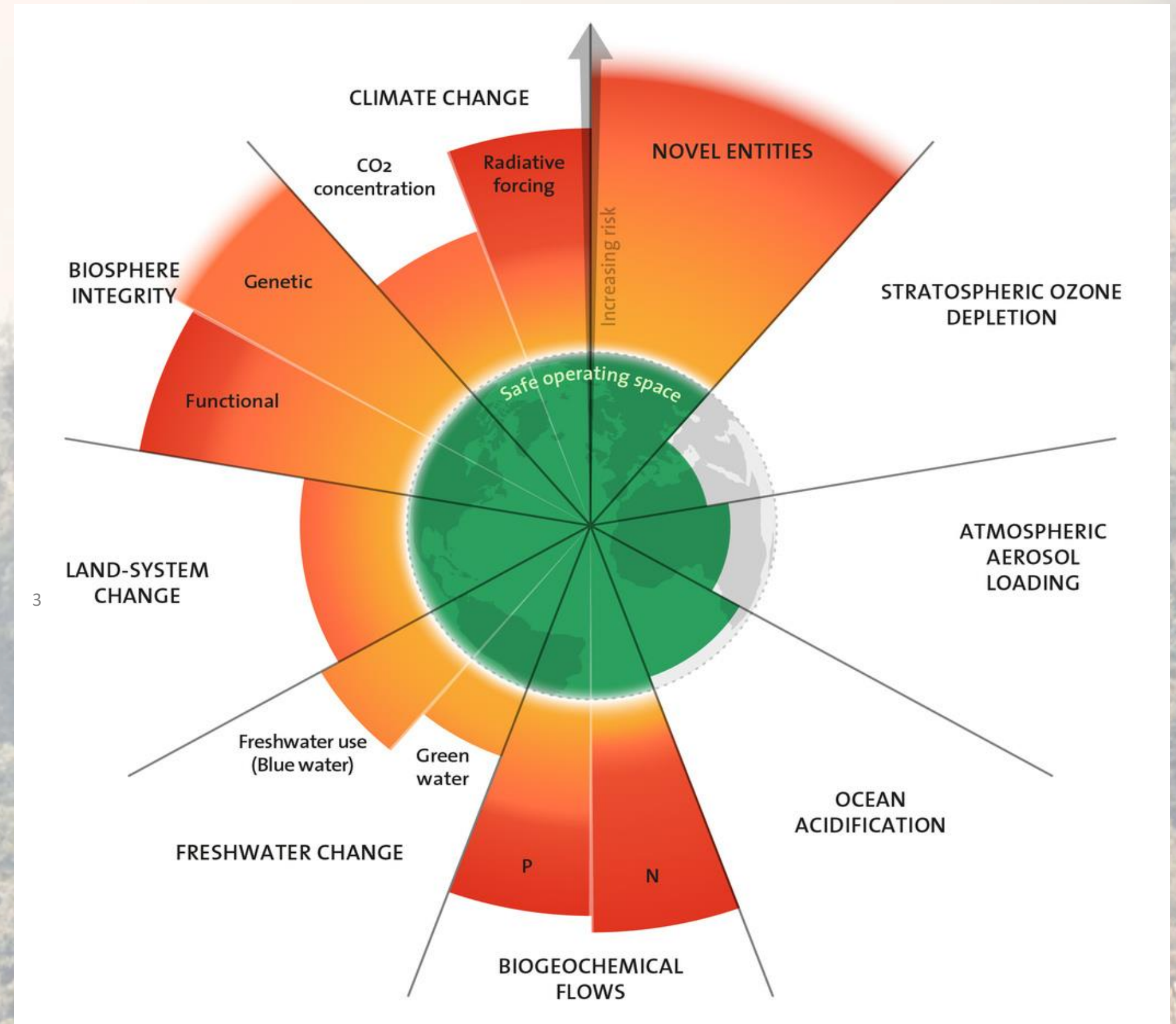
The Planetary Accounting dashboard is developed with Environment Canterbury and other community leaders through steps involving context gathering, co-designing targets, interventions/actions, programme delivery and reporting. This could include exploring how you could quantify the ecological ceiling of Te Tūtei o Te Hau Surveillance of the Wind.

The cost is dependent on the level of engagement and we can provide an indicative amount.

Planetary Boundaries

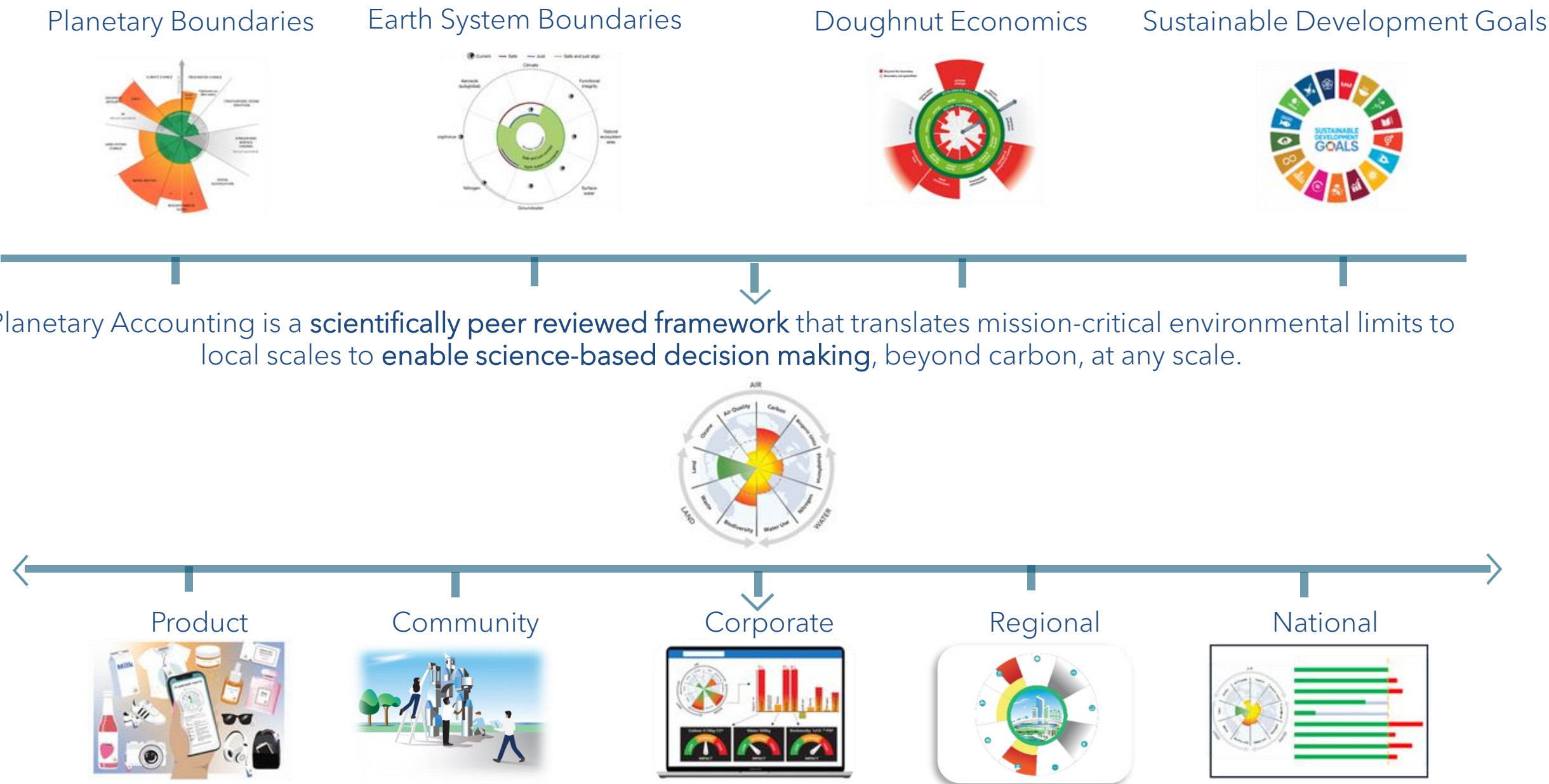
Planetary Accounting is based on the internationally recognized Planetary Boundaries - the crucial thresholds that define the safe operating space for humanity.

We are living beyond critical global environmental limits; the risk of fundamentally, irreversibly, and catastrophically altering the state of the planet is high.



Planetary Accounting

Planetary Accounting is used to quantify the impacts of a business, a life-style, a region, or a nation. It is a translation of critical global environmental limits (the Planetary Boundaries) into an accountancy framework which compares impacts to these limits. It also aligns with other global frameworks such as the Sustainable Development Goals, and international standards such as TNFD (Nature-Related-Disclosures).

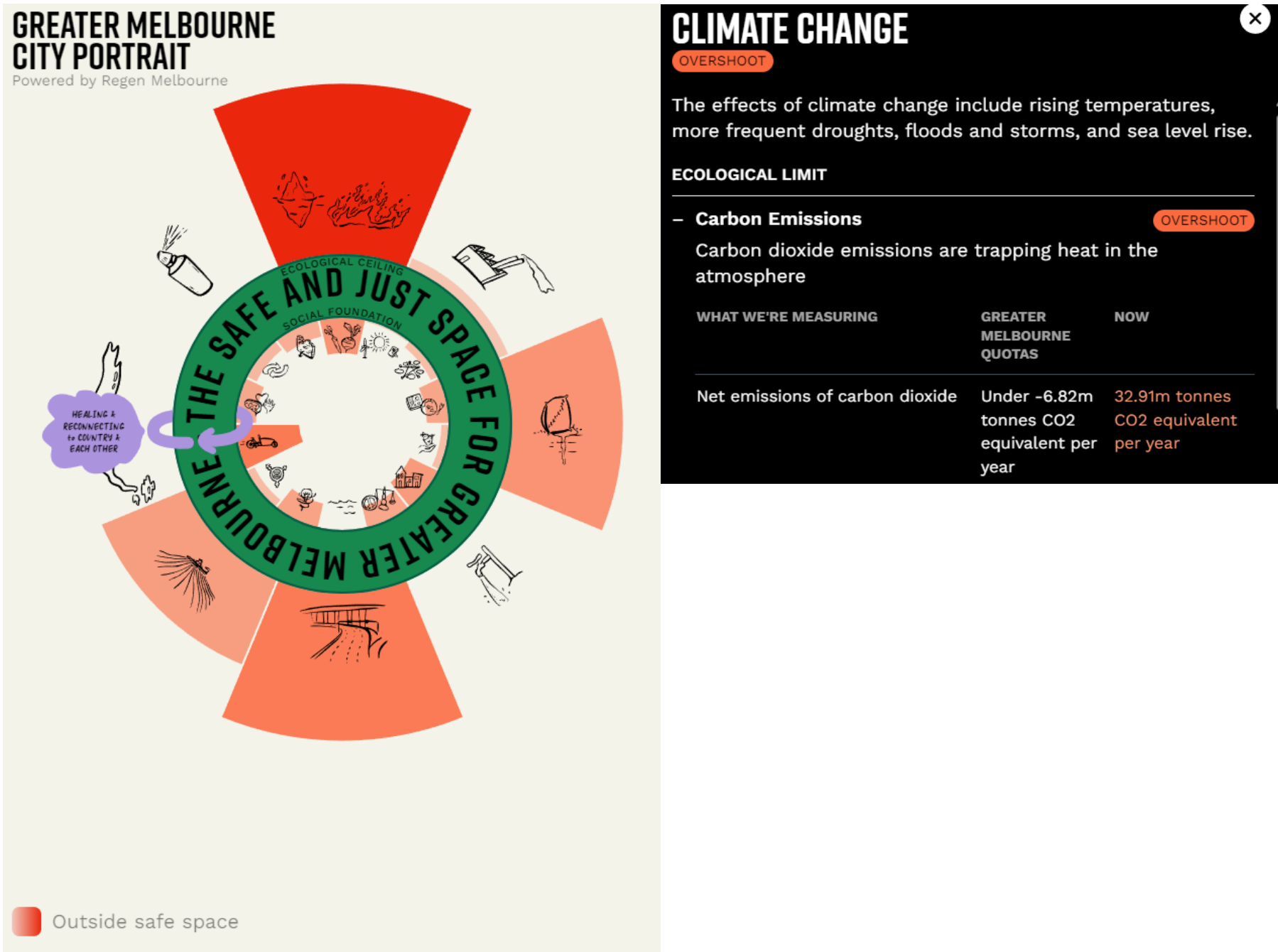


Planetary Accounting is fundamentally the **quantification of the environmental footprints** of human activity that consider impacts on air, land, and water, and comparing these against global limits – to provide **easy to understand data, in context**, for decision making.

Examples of Planetary Accounting

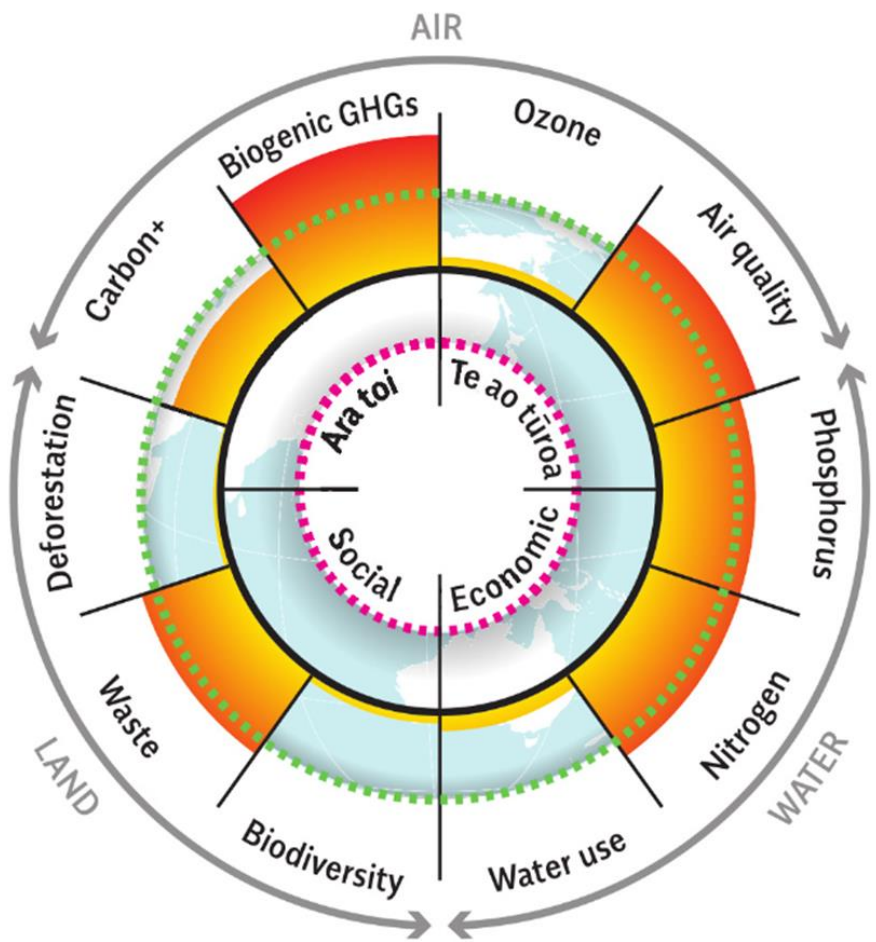
Regen Melbourne

A grass roots initiative using Planetary Accounting to improve community education and enabling communities to drive change. The interactive Melbourne doughnut at [Greater Melbourne City Portrait](https://regen.melbourne) (regen.melbourne) explores how well Melbourne is tracking as a place that supports people and planet to thrive.



Ōtepoti Doughnut

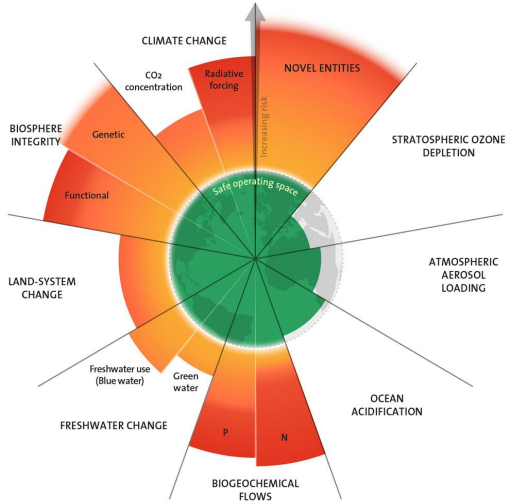
Developed with Dunedin City Council simplifying and synthesising data to compare/contrast/and align targets and efforts with global limits .



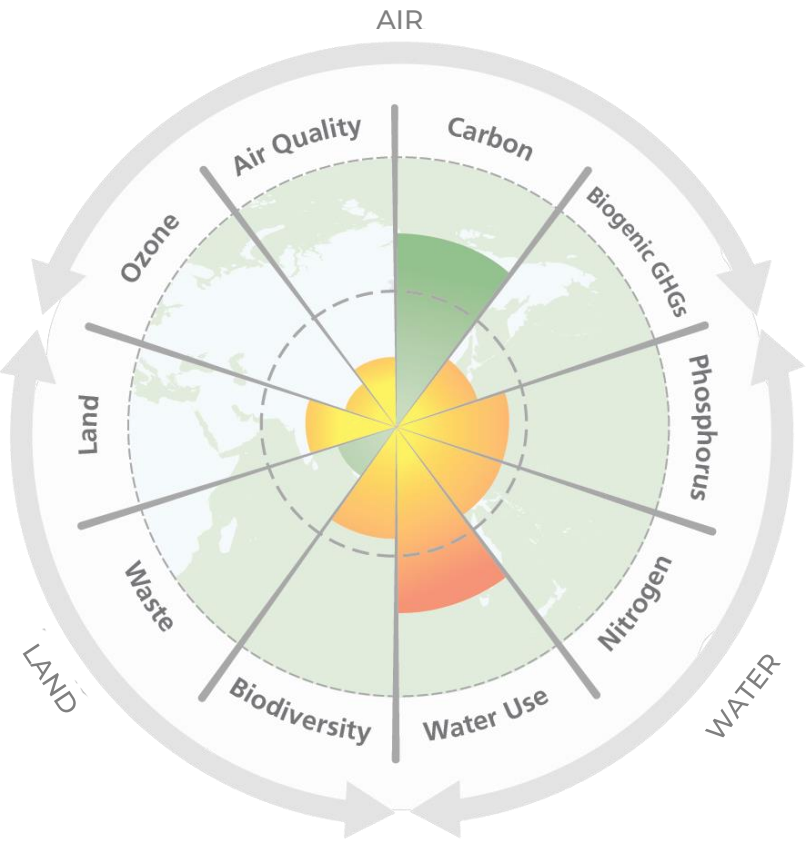
Green dotted line= Ecological ceiling
Above this line we exceed the planetary boundaries risking permanent damage to earth's life support system.

Pink dotted line = Social foundation
Below this line we are not meeting the needs of people-housing, health, cultural.

Planetary Accounting for Environment Canterbury

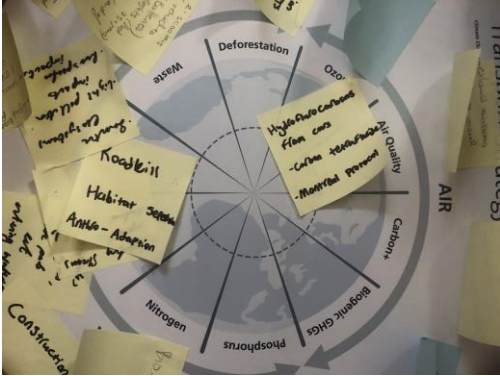


		3 Waters	Ara Toi	Economic Development	Parks and Recreation	Social Wellbeing	Spatial Plan	Te Ao Turoa	Transport	Waste Minimisation	Zero Carbon
Air/Land/Water	Carbon+										
	Biogenic-GHGs										
Air	Air Pollution										
	Ozone										
Land	Waste										
	Deforestation										
	Biodiversity		*								
Water	Nitrogen										
	Phosphorus										
	Water										



- ✓ Enable improved water and land use outcomes
- ✓ Accelerate regeneration of the natural environment
- ✓ Champion safe, reliable multi-modal transport choices
- ✓ Empowered communities taking action
- ✓ Prepared and resilient communities

Outcome measures	What are we measuring and reporting?	Outcome measure targets
A. Health and well-being of waterbodies and freshwater ecosystems		
• Concentrations of nitrates in monitored groundwater sites	Reporting annually on the ten-year trend (in 2022 concentrations of nitrates were increasing in 53% of wells)	Decreasing
• Concentrations of E. coli at monitored river and stream sites	Reporting annually on the percentage of sites that are degraded (in 2022/23, 57% of sites were degraded (D or E grade))	Decreasing
• Proportion of water take consents that align with regional plan minimum flow limits	Reporting annually on the total consented water takes that have minimum river flow conditions aligned with regional plan minimum flows. Minimum flows are set to protect a range of values, which can include ecological, economic, cultural and social values and baseline to be established	Increasing
B. Wetlands		
• Extent and values of natural inland wetlands	Method to be defined and baseline to be established	Increasing
C. Health and wellbeing of coastal environments		
• Muddiness in monitored estuary and mudflat environments	Reporting annually on the five-year trend of muddiness (in 2022/23, muddiness was increasing at 4 of 13 sites (31% of sites))	Decreasing
• Monitored coastal sites deemed suitable for recreational contact	Reporting annually on sites deemed suitable for recreational contact (in 2022/23, 78% of coastal sites were deemed suitable)	Increasing
For more information on the monitoring and reporting of the health and wellbeing of the Canterbury environment, including freshwater ecosystems, wetlands and coastal sites, see the Land, Air Water Aotearoa (LAWA) website and the Environment Canterbury website		



Why Planetary Accounting?



Underpin environmental goals & decisions with **ROBUST SCIENCE**
Leverage science and data to keep ahead of regulation and community expectations by aligning strategic goals with what is necessary for a healthy planet.



Look beyond **CARBON**
Gain a holistic view of the environmental impacts of your region considering our treasured taonga; whenua (land), wai (water), and hau (air).



Enable **COLLECTIVE** action
Engage community, business, and government stakeholders through the adoption of this scalable framework that supports collaborative action for systemic change.



Connect to **GLOBAL FRAMEWORKS**
Align your strategy and actions with international frameworks including Doughnut Economics, Planetary Boundaries, and the UN-SDGs



INNOVATION and **TRANSFORMATION**
Set absolute sustainability targets to establish a design brief for the future to enable a shift from incremental improvement to transformative change



ILLUMINATE priority opportunities
Easily identify the highest impact activities in the region, and opportunities to generate the greatest environmental outcomes.



COMMUNICATE future vision
Simplify the communication of complex environmental challenges to inspire action towards a future people want; people living well on a healthy planet.

“We’re big fans of using simple, clear language to help people understand sustainability – and take action! Planetary Accounting does this.”

- Jeff Vickers | thinkstep-anz





www.planetaryaccounting.org
info@planetaryaccounting.org

Our mission is to help people, businesses, and governments to operate within the planets limits - because we believe that living well requires a healthy planet.