

**Workshop - Banks Peninsula Water Management Zone  
Committee  
MINUTES ATTACHMENTS**

---

**Date:** Tuesday 19 September 2023  
**Time:** 5.30 pm  
**Venue:** Lyttelton Community Boardroom, 25 Canterbury Street, Lyttelton

---

<b>TABLE OF CONTENTS NGĀ IHIRANGI</b>	<b>PAGE</b>
<b>2. Banks Peninsula Water Zone Management Committee - Workshop</b>	
A. About reWild .....	3

---





# reWild Wainui, Wainui, Banks Peninsula



## A quick Intro.

- Degrees in marketing and economics, with a background in IT
- Owned and managed a software and marketing agency for 20 years
- Bought a property in Wainui during the pandemic
- Had never killed a pest until 2021. After a false start, fell in love with killing things\*
- Completed courses at NMIT in conservation and trapping
- Now personally own or have tested most traps on the market, plus a few that aren't
- Not surprisingly, I have a strong interest in trapping and technologies

\* Pests obviously!



Find out more about our project at [www.rewildwainui.nz](http://www.rewildwainui.nz)

## Our Vision



*Enhancing Wainui as a haven in  
which nature and people thrive.*



### reducing Weeds

Weeds outcompete native plants, depriving our native birds and the bees of important food sources.

Reducing weeds such as old man's beard helps our native plant species flourish again.



### removing Pests

Introduced predators such as rats, stoats and possums are our native birds' worst enemies as they have no natural defense.

Removing pests means more food for our native invertebrates and birds, and a safe environment to live in.



### replanting Natives

Our native birds love habitats where they can easily find food and water and build a nest.

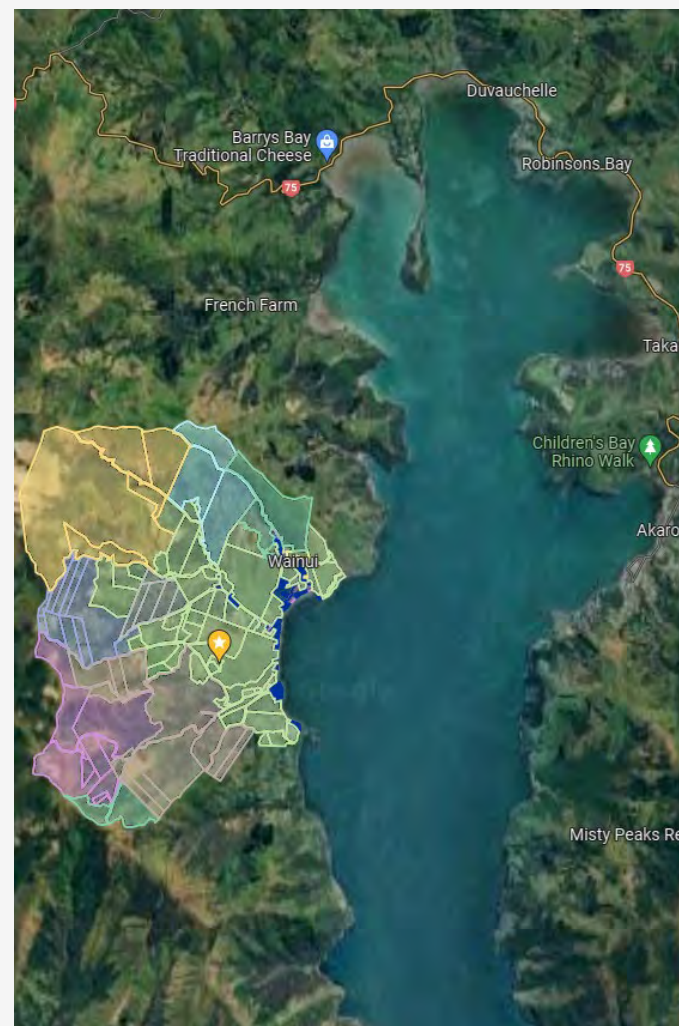
Replanting natives increases the diversity of our bush, and provides food and shelter for our birds.



For more information on reWild Wainui, visit [www.rewildwainui.nz](http://www.rewildwainui.nz)

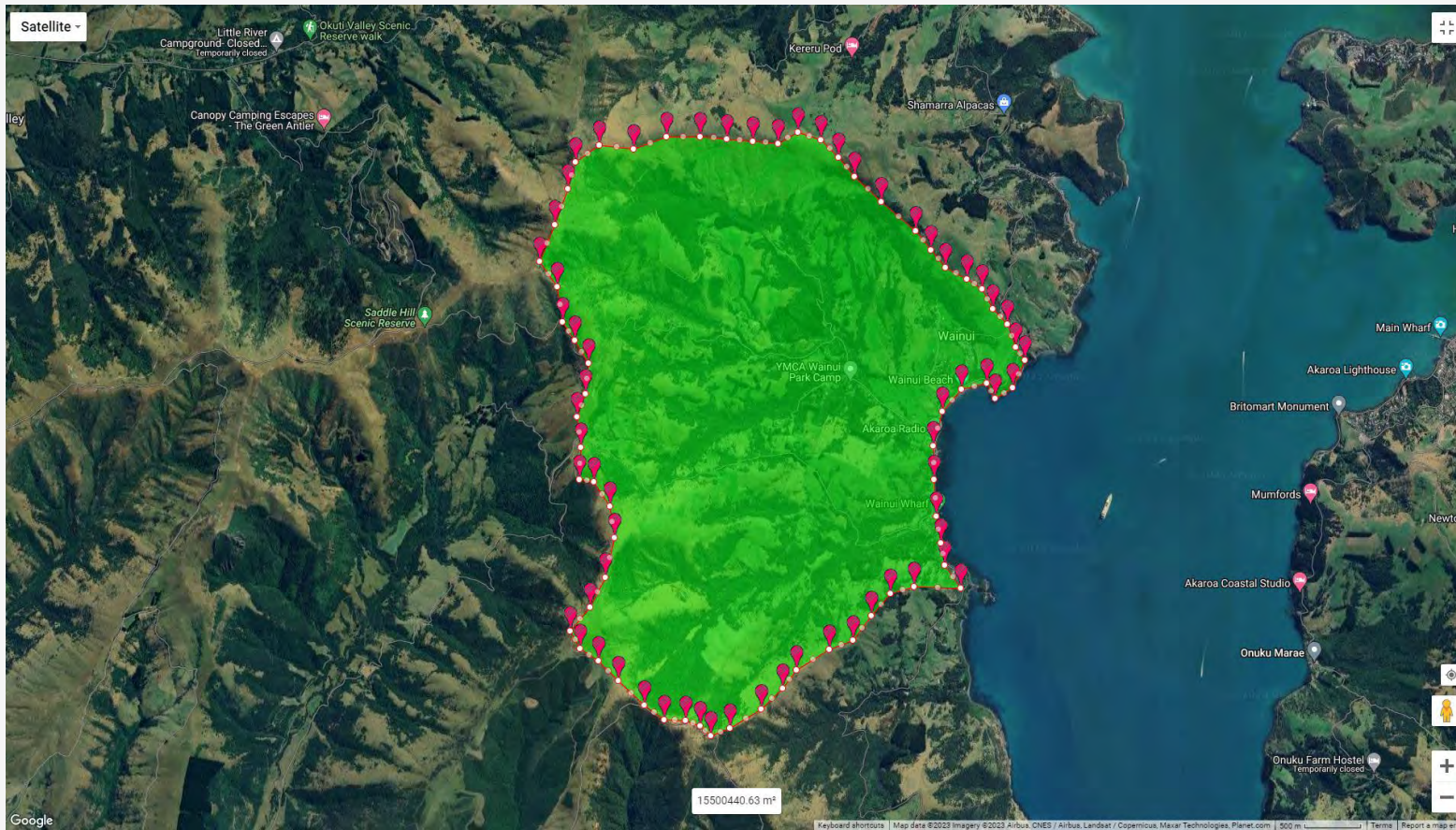
## Wainui

- Across the Harbour from Akaroa, no shops or services, a small permanent population
- An approx. catchment of 1600 hectares, divided across 286 land parcels.
- The top 2 land parcels (1 landowner) comprise 567ha, or 36% of the catchment.
- 10 parcels (including DoC) comprise 1138ha, or 73% of the catchment.
- Few if any original forest remnants, however a number of older trees
- Very rough estimate of 20-25% regenerating bush cover
- “Reasonable” access due to pastoral use
- Significant pest populations



Find out more about our project at [www.rewildwainui.nz](http://www.rewildwainui.nz)

# Our Catchment



For more information on reWild Wainui, visit [www.rewildwainui.nz](http://www.rewildwainui.nz)



































