

## **Application to Declare a Major Maritime Event**

---

**Name of Event:** SailGP

**Date of Event:** 13<sup>th</sup> – 19<sup>th</sup> March 2023

**Location:** Lyttelton Harbour / Whakaraupō, Canterbury

**Application Date:** 15<sup>th</sup> June 2022; document updated with minor but changes for clarification 20 October 2022

### **Intro**

---

In March 2023, Lyttelton Harbour / Whakaraupō will be the venue for the New Zealand leg of the SailGP sailing race series. The series races 50m foiling catamarans in many different harbours around the world including Sydney, San Francisco, Bermuda, Saint Tropez, and Plymouth.

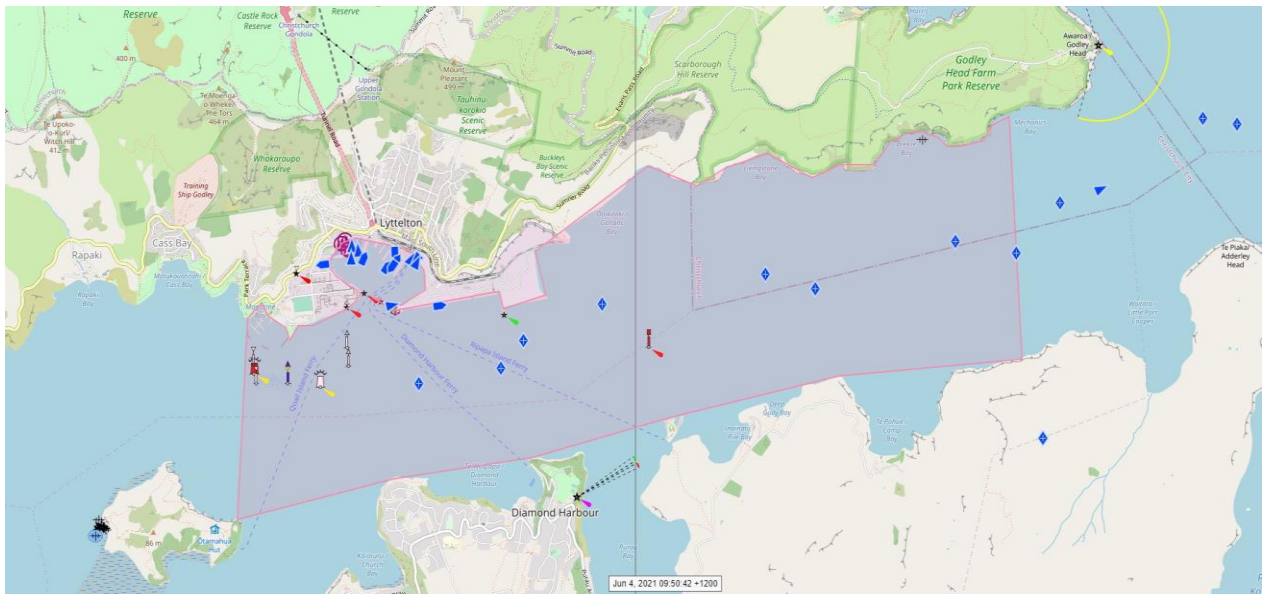
Each event consists of 6 races over 2 days on a set course. All nine or ten yachts race at the same time on the same course and speeds of over 50 knots are often achieved.

The catamarans will be on the water in the harbour during the week leading up to the race, however they will be spread out over the whole harbour with no dedicated racecourse set up – normal Maritime Rules and Bylaw regulations will apply during this time and no special maritime powers are required.

The official racecourse – adjacent to Lyttelton Port’s Cashin Quay and cruise ship berth - will be set up from Thursday 16<sup>th</sup>, which will allow for practice days on Thursday 16<sup>th</sup> and Friday 17<sup>th</sup> March, with racing on Saturday 18<sup>th</sup> and Sunday 19<sup>th</sup>.

### **General Designated Area**

- a. The area of tidal waters inside a line drawn from the Western end of Magazine Bay to the easternmost point of Ōtamahua / Quail Island; then by a straight line to Pauaohinekotau Head; then by a straight line to the northern headland of Stoddart Point; then by a straight line to the northernmost point of Ripapa Island; then by a straight line to the western headland of Te Pōhue / Camp Bay; then by a straight line to the point on the southern shore of the harbour intersected by longitude 172° 48.0’; then northwards along longitude 172° 48.0’ until meeting the northern shore of the harbour in Mechanics Bay; then in a westerly direction around the water’s edge, including the Lyttelton Inner Harbour, returning back to the Western end of Magazine Bay. This area is indicated approximately on the following chart.



## Applicable period

### **Monday 13<sup>th</sup> March 2023 to Sunday 19<sup>th</sup> March 2023**

- a) SailGP set up and informal practice days: Monday 13<sup>th</sup> March through to Wednesday 15<sup>th</sup> March.
- b) SailGP practice days on the racetrack: Thursday 16<sup>th</sup> and Friday 17<sup>th</sup> March 2023.
- c) SailGP race days: Saturday 18<sup>th</sup> March 2023 and Sunday 19<sup>th</sup> March 2023

### **Note:**

Race activity on the harbour will generally be active from 1000 to 2100 hours (subject to changes determined on a daily basis by the Harbourmaster's Office). The specific hours of operation will be announced by public broadcasting, event website and marine communication channels on a daily basis

### **Summary:**

We require the Major Maritime Event powers from 0000 hrs Monday 13<sup>th</sup> March 2023 to 2359 hrs Sunday 19<sup>th</sup> March 2023

## Proposed Conditions and Requirements

- I. The racecourse to be used on any given day will be publicly announced by 1200 on the day of the race by public broadcasting, event website and marine communication channels. Buoyed transit lanes, as may be required, will allow transiting vessels to navigate outside the course.
- II. On race days, only power-driven vessels may use the transit lanes or restricted areas. No sails may be hoisted whilst in transit lanes or restricted areas. Vessels must be able to maintain a proper speed of 5 knots during transit and must not stop, turn around or anchor within a transit lane.
- III. Charts showing the location of the racecourses and transit lanes will be widely promulgated prior to the event period as part of the event's overall public education programme.
- IV. Once a racecourse is designated, the perimeter of the course, and designated areas will be conspicuously marked with buoys and stake boats, as appropriate, by the event organiser.
- V. Once the racecourse is designated and marked, only competing yachts, vessels used by the race committee, umpires, marshals, emergency vessels, Lyttelton Port Company and vessels accredited by the event organiser and Harbourmaster's Office may navigate within the marked perimeter until the Harbourmaster's Office, or delegate, has announced on VHF Ch16 that the day's races have been concluded.
- VI. The Harbourmaster's Office may vary conditions for the day-to-day management and conduct of activities within the designated areas (as per section 200A(2)(e) of the Maritime Transport Act 1994) as required for the proper management and conduct of vessels and activities within the designated areas or for the purposes of maritime safety. This includes the ability to set speed limits, reduced wake zones and restricted access areas.
- VII. Except where expressly authorised by the Harbourmaster's Office, all vessels must be navigated in accordance with Maritime Rules Part 22: Collision Prevention.
- VIII. All vessels are to remain in compliance with the Canterbury Regional Council Navigation Safety Bylaw 2016 and Controls as well as Harbourmaster's Directions.
- IX. No Vessel over 40m length overall (LOA) may navigate within the designated area on race days from one hour before the initial estimated race start time (as estimated at the start of the day by the race officials) to when racing has concluded without prior written approval of the Harbourmaster's Office. The Harbourmaster's Office will closely coordinate commercial shipping movements with Lyttelton Port Company.

- x. No Vessel over 40m LOA may anchor or hold position within the designated area during the applicable period without prior written approval of the Harbourmaster's Office.
- xI. The Harbourmaster's Office may introduce restrictions on vessels or classes of vessels including those operating without motorised propulsion during the applicable period. Notification of these restrictions will be promulgated on the day of the race by public broadcasting, event website and marine communication channels.
- xII. From one hour before the initial estimated race start time (as estimated at the start of the day by the race officials) to when racing has concluded, and if determined by the Harbourmaster, no vessel may enter into or exit from the Inner Harbour without calling Harbour Radio on VHF Ch12 and obtaining their permission to enter into or exit from the Inner Harbour. The Harbourmaster's Office may restrict access to the Inner Harbour area or introduce restrictions on vessels or classes of vessels, including those operating without motorised propulsion, within the area.
- xIII. The Harbourmaster's Office may order the suspension or abandonment of racing operations if, in the opinion of the Harbourmaster's Office or having received advice from Police, adequate levels of public safety cannot be guaranteed or for any other Harbour emergency /situation which may occur. This power will be exercised in consultation between the New Zealand Police, Harbourmaster's Office, and the event organiser and Lyttelton Port Company

## **Means of Enforcement**

- a. Compliance with the above conditions and requirements will be enforced by appointed enforcement officers, as defined in section 200B (6) of the Maritime Transport Act 1994:
  - i. All constables and all police employees who are not constables authorised for the purpose by the Commissioner of Police.
  - ii. All members of the New Zealand Defence Force authorised for the purpose by the Chief of Defence Force.
  - iii. Harbourmasters employed or engaged by the Canterbury Regional Council.
  - iv. Such other persons as may for the time being be authorised for the purpose by the Harbourmaster's Office.
- b. The event organisers, SailGP Ltd, are responsible for:
  - i. The management of the racecourses and designated on-water spectator areas.
  - ii. All movement of team boats, media, allocated/reserved spectators, and other event related vessels including to and from the racecourses (for competition and training), the on-water media areas, and the on-water allocated/reserved spectator areas.
- c. The event marshals will be Honorary Enforcement Officers warranted with the powers prescribed in Section 200b of the Maritime Transport Act 1994. They will be employed or engaged by SailGP Ltd and appointed by Canterbury Regional Council.

- d. Under section 200b (5) of the Maritime Transport Act 1994, any person in charge of a vessel who contravenes this notice commits an infringement offence and is liable to the relevant penalty prescribed in the Maritime Transport (Infringement Fees for Offences Relating to Major Maritime Events) Regulations 1999.

Ends