

## NOTE

Just because your property has a land use that is deemed hazardous or is on the LLUR, it does not necessarily mean it is contaminated. The only way to know if land is contaminated is by carrying out a detailed site investigation, which involves collecting and testing soil samples.

## If your land is on the LLUR

You do not need to do anything if your land is on the LLUR and you have no plans to alter it in any way.

You will need to let a tenant or buyer know your land is on the LLUR if you intend to rent or sell your property. If you are not sure what you need to tell the other party, seek legal advice.

You may choose to have your property further investigated for your own peace of mind, or to carry out some of these activities:

- earthworks
- subdividing
- changing land use
- removing or replacing an underground fuel storage tank.

If you would like a Suitably Qualified and Experienced Practitioner (SQEP) to do a detailed site investigation, we have some recommendations on how to choose one on [ecan.govt.nz/HAIL](http://ecan.govt.nz/HAIL).

## Changing an incorrect category

If you do an environmental investigation on your site, send us the report and we will review the LLUR category. Similarly, if you have information that shows your site has not been associated with HAIL activities, or if other HAIL activities have occurred that we have not listed, let us know so we can make sure our records are accurate.

If we have incorrectly identified that a HAIL activity has occurred at a site, it will not be removed from the LLUR but instead categorised as Verified Non-HAIL. This ensures that the same site is not re-identified in the future.

## Contact us

Property owners have the right to look at all the information Environment Canterbury holds about their properties.

It is free to check the information on the LLUR, online at [llur.ecan.govt.nz](http://llur.ecan.govt.nz).

If you don't have access to the Internet, you can enquire about a specific site by:

Phoning us on **0800 EC INFO (32 4636)** during business hours.

Emailing us at [ecinfo@ecan.govt.nz](mailto:ecinfo@ecan.govt.nz).

# Listed Land Use Register

## What you need to know



## What is the Listed Land Use Register (LLUR)?

The Listed Land Use Register (LLUR) is a publicly available database of sites where hazardous activities and industries have been located throughout Canterbury.

## Why we need the LLUR

Some activities and industries are hazardous and can potentially contaminate land or water. Section 30 of the Resource Management Act (RMA, 1991) requires Environment Canterbury to investigate, identify and monitor contaminated land. The LLUR helps us manage information about land that could pose a risk to your health and the environment because of its current or former land use.

To do this, we follow national guidelines and use the LLUR to manage the information.

## Identifying LLUR sites

Identification is based on a list of land uses produced by the Ministry for the Environment (MfE) called the Hazardous Activities and Industries List (HAIL)<sup>1</sup>. The HAIL has 53 different activities, and includes land uses such as: fuel storage sites, orchards, timber treatment yards, landfills, sheep dips and any other activities where hazardous substances could cause land and water contamination.

### Identifying HAIL sites:

- Since 2008, we identify HAIL sites in each district using historic records and aerial photographs
- We use environmental site investigation reports submitted to us as a requirement of the Regional Plan, and in resource consent applications.

<sup>1</sup> The Hazardous Activities and Industries List (HAIL) can be downloaded from MfE's website [mfe.govt.nz](http://mfe.govt.nz), keyword search HAIL.

If you are initiating an environmental investigation or removing an underground storage tank at your property, you will need to comply with the rules in the current Canterbury Land and Water Regional Plan and send us a copy of the report. This means we can keep our records accurate and up-to-date, and we can assign your property an appropriate category on the LLUR. To find out more, visit [www.ecan.govt.nz/HAIL](http://www.ecan.govt.nz/HAIL).

## Classifying HAIL sites

Where we have identified a HAIL land use, we review all the available information, which may include investigation reports, and then assign the site a category on the LLUR.

The category is intended to best describe what we know about the land use and potential contamination at the site.

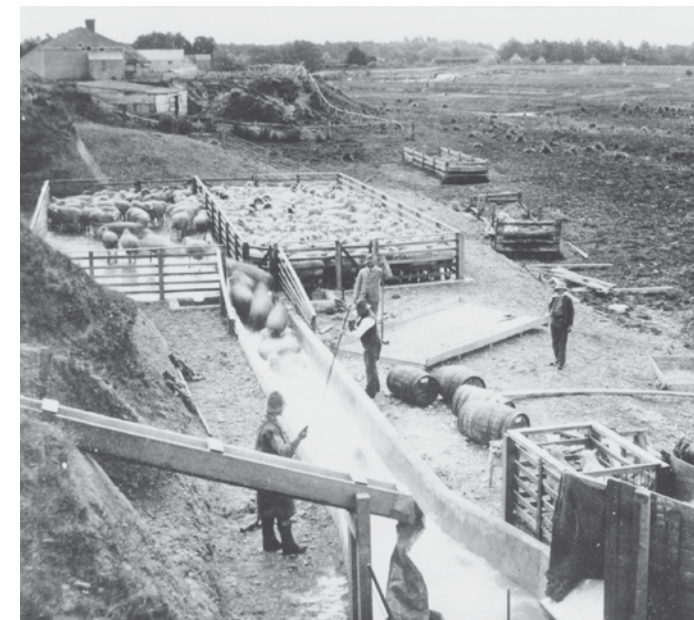
## Using this information

The LLUR is available online at [llur.ecan.govt.nz](http://llur.ecan.govt.nz). Enquirers receive a summary of any information we hold, including the category assigned to the site and a list of investigation reports.

We may also use the information to prioritise sites for further investigation, remediation and management, to aid with planning, and to help assess resource consent applications, which are some of our other responsibilities under the RMA.

### NOTE

Since we continually update the LLUR online database, a property may not currently be registered on the LLUR, but this does not necessarily mean that it has not had a HAIL use in the past.



Sheep dipping (ABOVE) and gas works (TOP) are among the former land uses that have been identified as potentially hazardous. (Photo above by Wheeler & Son in 1987, courtesy of Canterbury Museum.)