

# ***Essential Freshwater package***

---

## ***Agricultural intensification***

*Guardianship of our waterways:*

*What the new rules and regulations mean for you*



For more information visit  
[ecan.govt.nz/essential-freshwater](http://ecan.govt.nz/essential-freshwater)

# Agricultural intensification

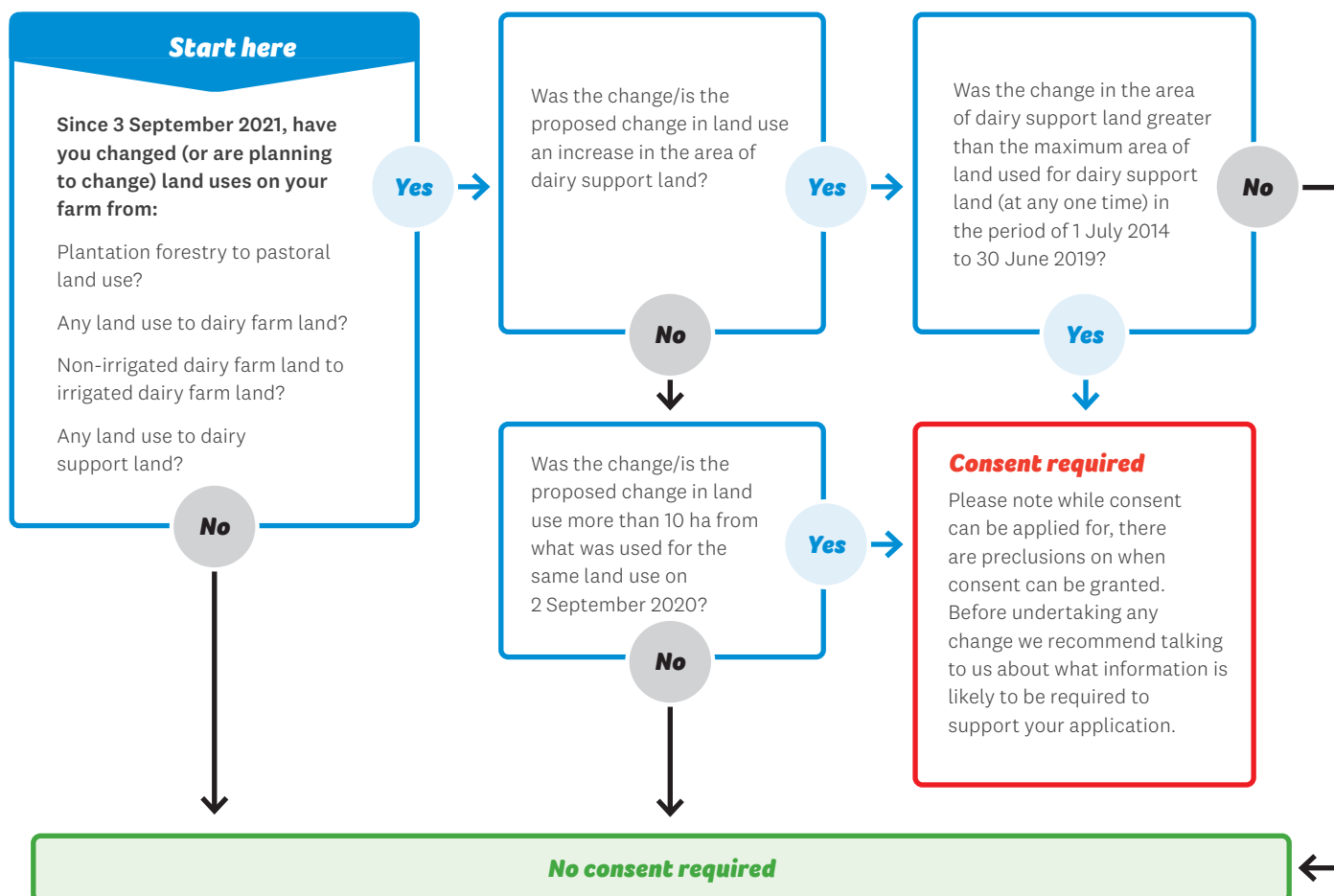
*Various conversions over 10 hectares now require resource consent.*

In August 2020, the Government released the Essential Freshwater package. The package includes, among other pieces of legislation, the National Environmental Standards for Freshwater 2020 (NES-F). The NES-F introduces essential environmental protections for a consistent approach to improving environmental outcomes nationwide.

Agricultural intensification can result in higher levels of nutrients, sediment and microbial contamination of our rivers, lakes, wetlands and groundwater. To restrict discharges of contaminants into these environments, various land use conversions over 10 hectares now require resource consent. This brochure details the types of conversions that are permitted, or require resource consent, under the Essential Freshwater package.

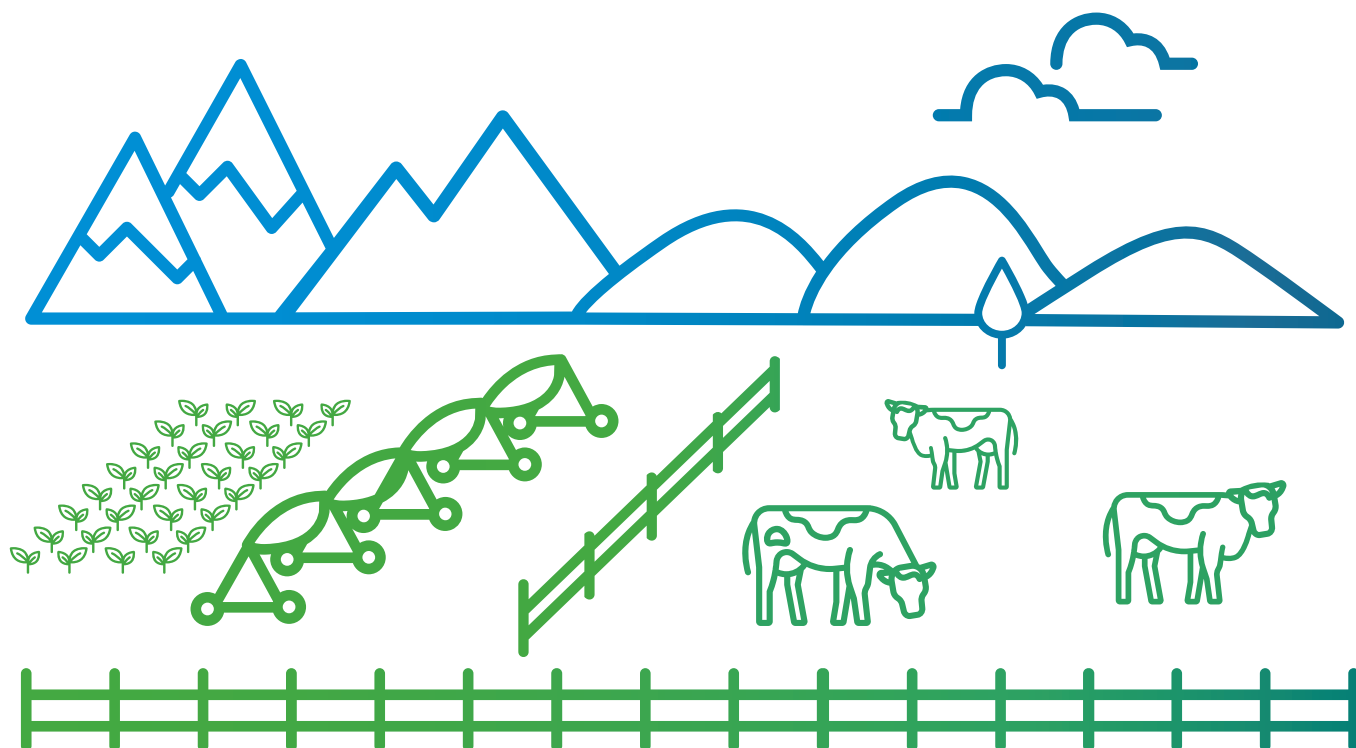
## National requirements for agricultural intensification

*National Environmental Standards for Freshwater 2020 (NES-F)*



For more information on agricultural intensification under the Essential Freshwater package, including land use definitions, visit [ecan.govt.nz/essential-freshwater](https://ecan.govt.nz/essential-freshwater)





## **Regional requirements – Canterbury Land and Water Regional Plan**

The Canterbury Land and Water Regional Plan (LWRP) includes rules for managing the impacts of land use on water quality. There are region-wide land use rules, and specific rules for some zones which recognise their unique geography and water quality challenges. To find out which zone you are in, and which rules apply to your farm, please read the zone-specific rules at [ecan.govt.nz/farmers-hub](https://ecan.govt.nz/farmers-hub).

Many farmers in Canterbury already have a Farming Land Use Consent. However, if you intensify your farming operation, your existing Farming Land Use Consent does not exempt you from the rules in the NES-F. In these circumstances, it is important you contact us early to discuss your options. Any intensification will need to consider the rules in both the LWRP and the NES-F.



### **Important note**

This guide does not represent the full detail of the Government and Environment Canterbury rules that could apply to your activity. For more information visit [ecan.govt.nz/essential-freshwater](https://ecan.govt.nz/essential-freshwater).

### **Need a hand?**

We know there is a lot to think about in the new Essential Freshwater package. If you're not sure where to next, or how to apply for your resource consent, check out our website [ecan.govt.nz/essential-freshwater](https://ecan.govt.nz/essential-freshwater) or give us a call. We're here to help.

### **Talk to your Zone team**

We have expert staff to provide localised assistance and advice regarding land management, consents and compliance. For support in your local area, give us a call on **0800 324 636**. We can arrange for your local land management advisor to pop out for a chat, or to catch up with you online or via email to help sort things out.

Names and contact details are also available at [ecan.govt.nz/farmers-hub](https://ecan.govt.nz/farmers-hub)

### **Industry support**

Farming industry bodies provide assistance to farmers. They also have useful information on their websites, which can be a great place to start for industry-specific advice.