

6<sup>th</sup> May

1. Long-term work-related exposure to silica dust has been linked in Australia to more than 200 lung cancer cases each year (Source = Australian Cancer Council)

Prevalence in this country is unknown, but silicosis is reported by WorkSafe to be second to asbestos in causing work-related cancer.

2. Children and aged people are both age groups which are considered more susceptible than fit & healthy adult workers, and are exposed to the emitted dust for far longer than workers, and do not have worker protection such as dust masks.

3. Therefore a major concern is long-term exposure of these groups to silica dust from the proposed quarry as a number of schools and age-care facilities are in close proximity (within approximately 2 km driving distance) of the quarry.

Specifically:

Annabel's Preschool

Montessori Preschool

Proposed Westpark Preschool

Ashgrove Primary School

Ballarat Retirement Village & Rest Home

Charles Upham Retirement Village & Rest Home

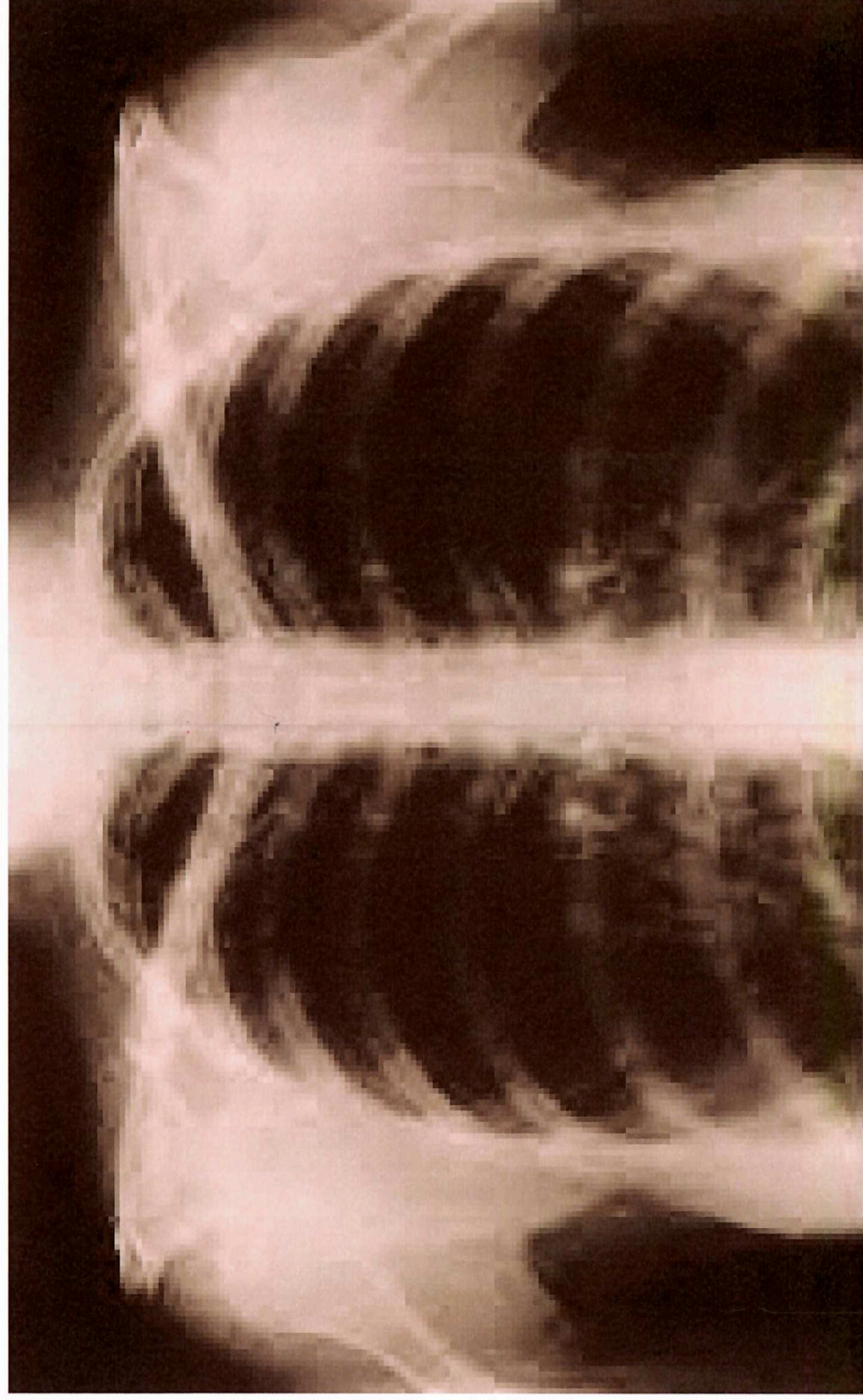
4. Relevant is also the types of silica dust. As reported by Kelvin Duncan (from Duncan Consultancies Limited) in March 2018, the dust is divided into 3 main subgroups:

PM 100 (the largest sized and therefore visible fraction) – which regulators tend to find easiest to concentrate on

PM 10 – smaller particles

PM 2.5 – the smallest particles, which travel up to 8 times further than PM 10 particles, and can “hang in the air” and therefore should be treated as a gas rather than dust particles (per Australian authorities) and can have serious effects on humans.

Submission by Sue Johnson

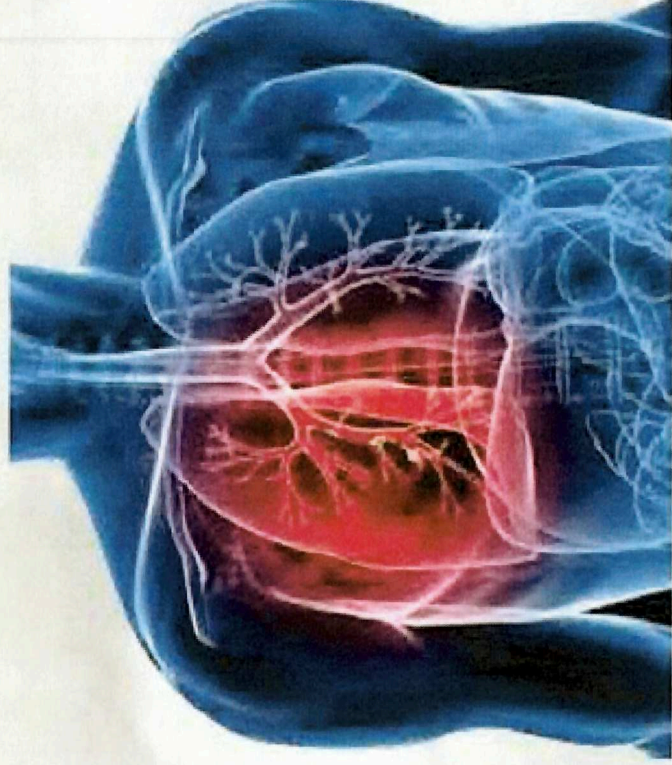


**Silicosis continues to progress even if exposure stops because once the tiny particles are in the lungs, it is impossible to cough them up.**



# Silica Health Hazards

KNOW THE  
HAZARD



- Silicosis - a disabling, non-reversible and sometimes fatal lung disease
- COPD - progressive lung diseases including emphysema, chronic bronchitis, refractory (non-reversible) asthma, and some forms of bronchiectasis.
- Lung cancer, Kidney disease, including nephritis and end-stage renal disease.

## Symptoms:

shortness of breath  
loss of appetite  
cyanosis (bluish skin)

severe cough  
chest pains  
fatigue  
fever

**HOW CAN WE LET GREED FOR MONEY**

**OUTWEIGH THE HEALTH AND WELLBEING**

**OF ALL THE PEOPLE OF RANGIORA.**

**AND WE DON'T WANT TO BE THOSE**

**RESPONSIBLE FOR LEAVING THIS**

**DISASTER FOR THE GENERATIONS TO**

**COME.**