

# Presentation to the PC7 Hearing Panel

---

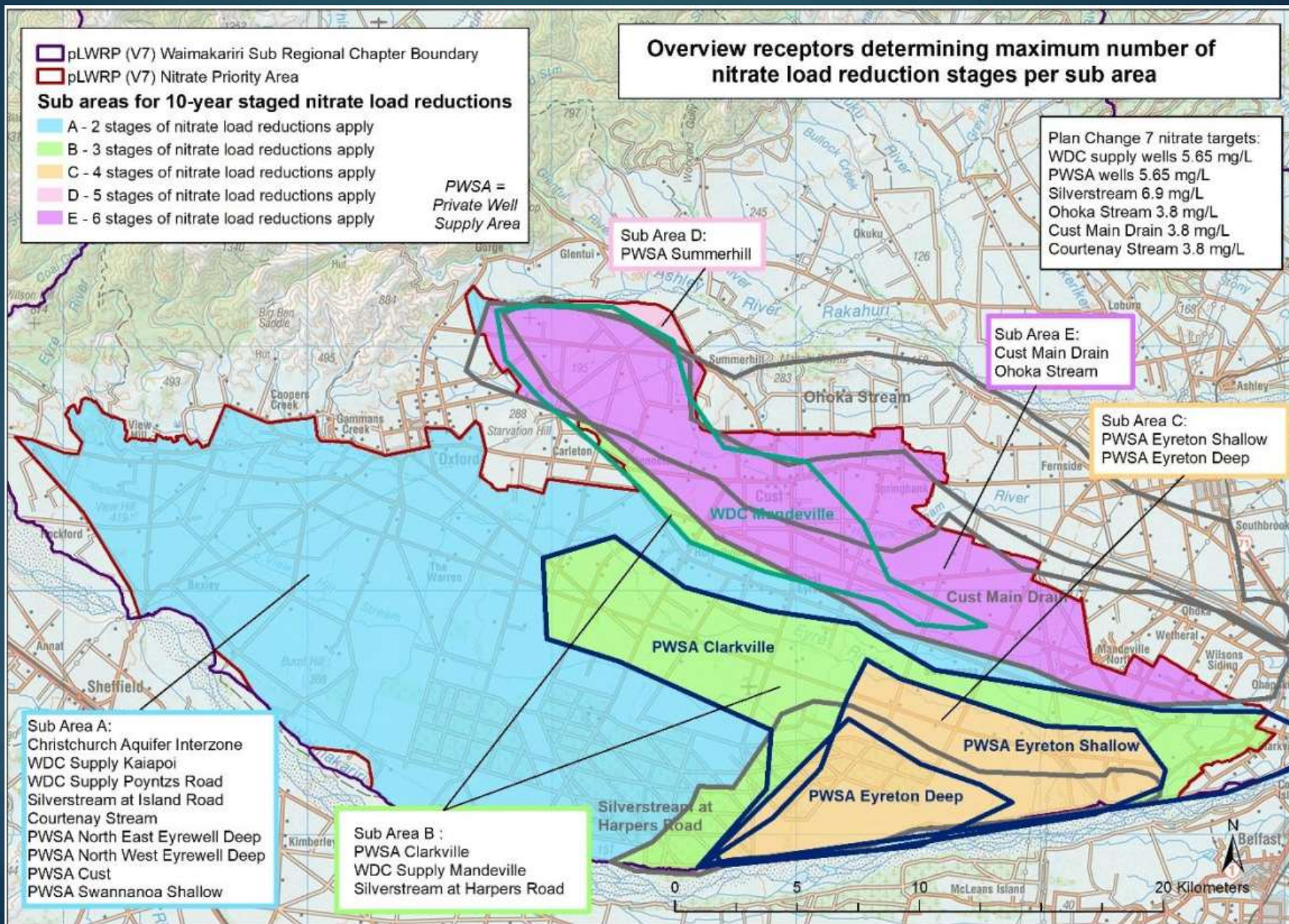
JEREMY SANSON, GROUNDWATER SCIENTIST, ON BEHALF OF WAIMAKARIRI  
IRRIGATION LIMITED



**solutions** for your environment



# Environment Canterbury's Solution



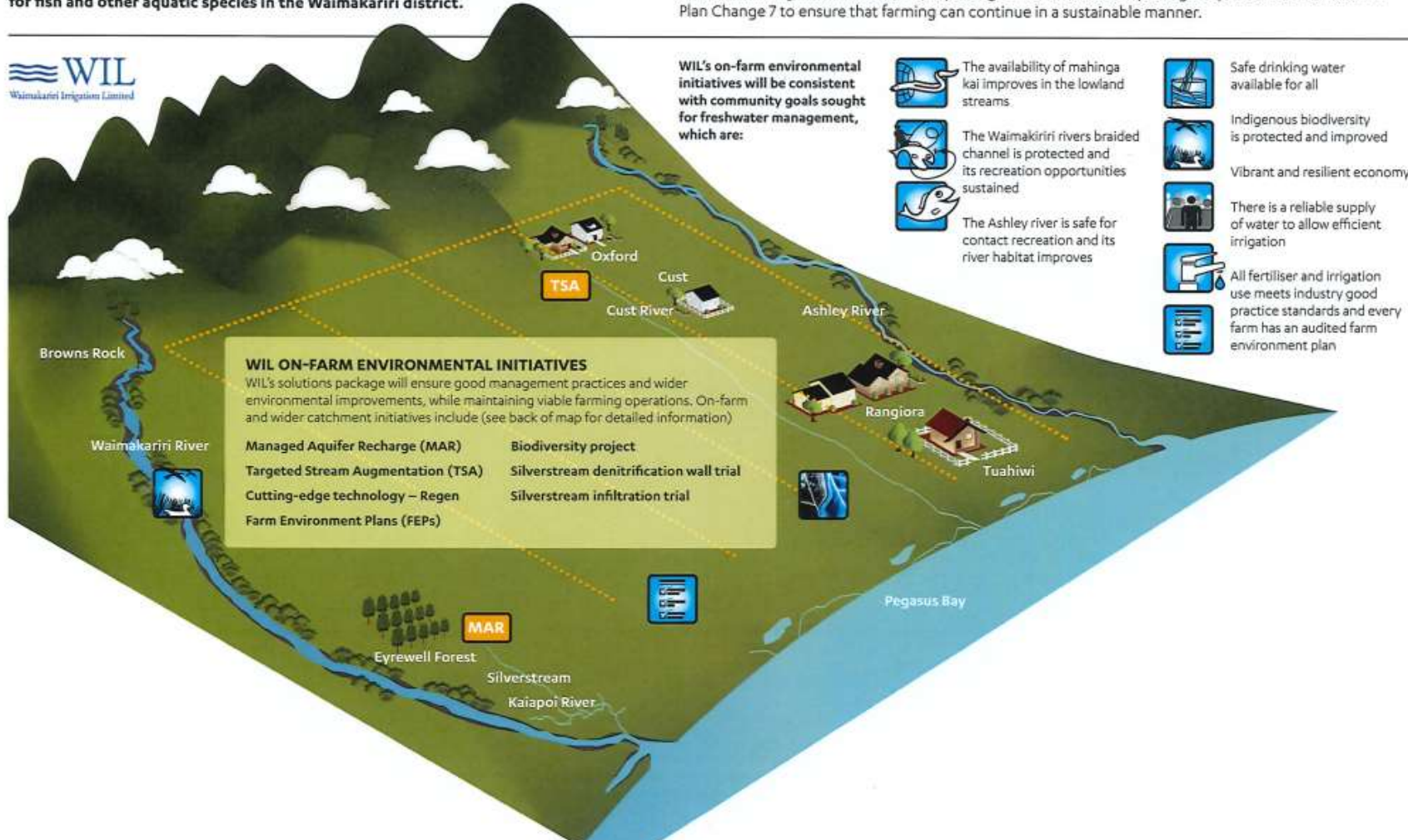
# The WIL Solution Package

## A SUSTAINABLE APPROACH TO IMPROVING WATER QUALITY

Environment Canterbury has recently notified Plan Change 7 to the Canterbury Land and Water Regional Plan. The goal of this plan change is to eventually reduce nitrate levels, improve drinking water quality and provide cleaner waterways for fish and other aquatic species in the Waimakariri district.

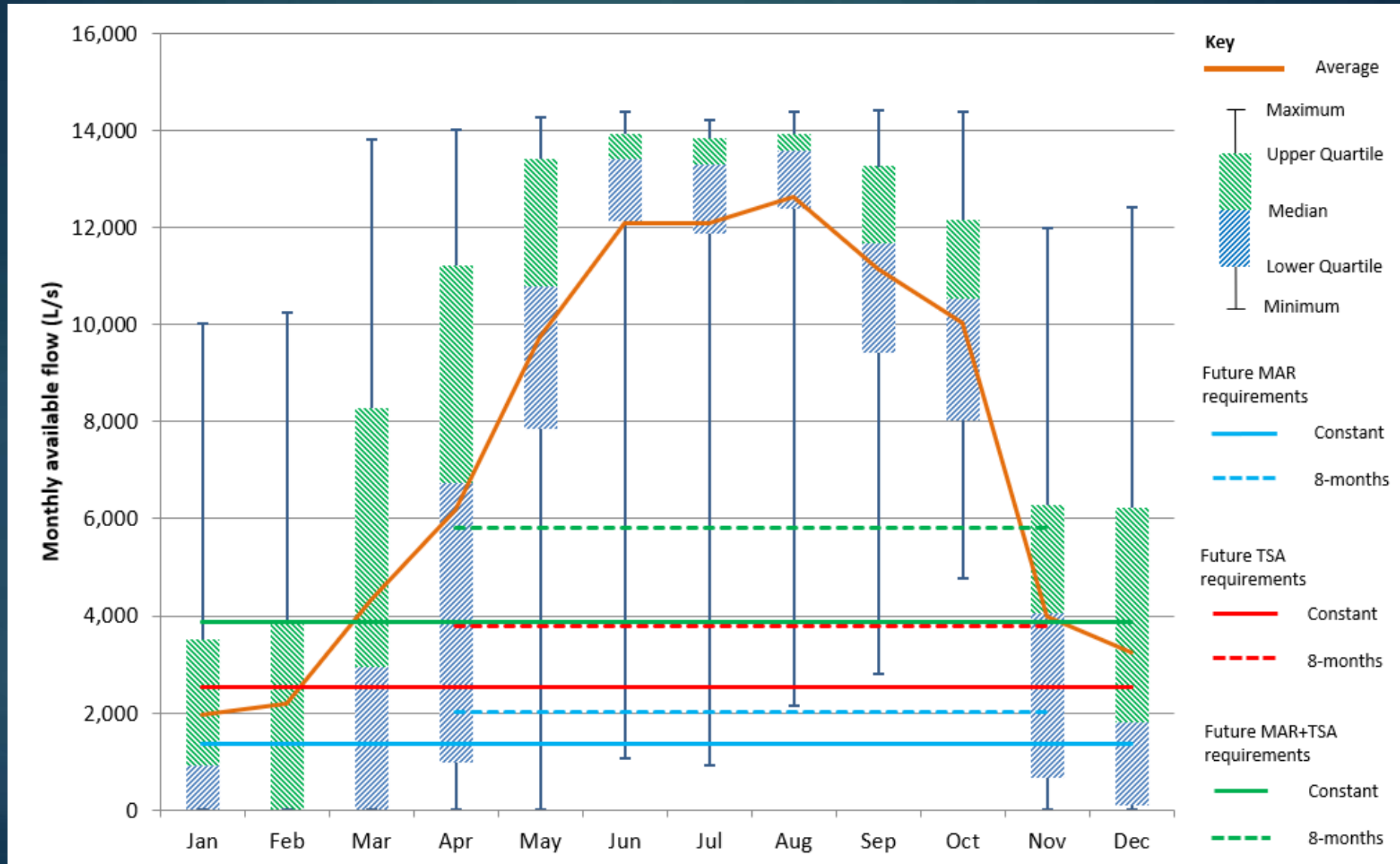
WIL is very clear that improvements sought in Plan Change 7 can only be brought about by a combination of both reduction in farming nitrogen losses and wider catchment interventions.

Waimakariri Irrigation Limited (WIL) is putting forward a solutions package as part of its submission to Plan Change 7 to ensure that farming can continue in a sustainable manner.



1. MAR + TSA
2. Achievable reductions from farms
3. Biodiversity projects
4. Improved monitoring

# MAR and TSA



# Achievable Reductions from Farms

**Table 8-9: Nitrate Priority Area Staged Reductions in Nitrogen Loss for Farming Activities, Farming Enterprises and Irrigation Schemes**

Nitrate Priority Sub-area (see Planning Maps)	Farming type	Cumulative Percentage reductions in nitrogen loss and dates by which these are to be achieved					
		By 1 January 2030	By 1 January 2040 (if required in accordance with Policy XXXX)	By 1 January 2050	By 1 January 2060	By 1 January 2070	By 1 January 2080
Sub-Area-A	Dairy	15%	Up to 30%	-	-	-	-
	All other	5%	Up to 10%	-	-	-	-
Sub-Area-B	Dairy	15%	30%	45%	-	-	-
	All other	5%	10%	15%	-	-	-
Sub-Area-C	Dairy	15%	30%	45%	60%	-	-
	All other	5%	10%	15%	20%	-	-
Sub-Area-D	Dairy	15%	30%	45%	60%	75%	-
	All other	5%	10%	15%	20%	25%	-
Sub-Area-E	Dairy	15%	30%	45%	60%	75%	90%
	All other	5%	10%	15%	20%	25%	30%

1. The starting point for applying each percentage reduction in nitrogen loss in Table 8-9 is generally the Baseline GMP Loss Rate, [calculated using OVERSEER or an equivalent model approved by the Chief Executive of Environment Canterbury](#), except as otherwise provided for in Policy 8.4.26 for individual farming activities and farming enterprises, and in Policy 8.4.29 for irrigation schemes.

2. For the purposes of applying the nitrogen reductions in Table 8-9, 'Dairy' farming does not include 'Dairy Support' activities. 'Dairy Support' is classified under 'All other' farming activities.

3 The percentage reductions required by Table 8-9 are only to be applied to farming activities that require resource consent for farming land use and where the required reduction for each stage is greater than 3 kg nitrogen per hectare for dairy, and 1 kg per hectare for all other farming activities.

4 [As set out in Policy XXXXX, the percentage reduction to be achieved by 1 January 2040 shall only be required to the extent that the nitrate nitrogen limits and targets in Tables 8-5, 8-7 or 8-8 are not met, or on the pathway to being met, by 1 January 2030.](#)