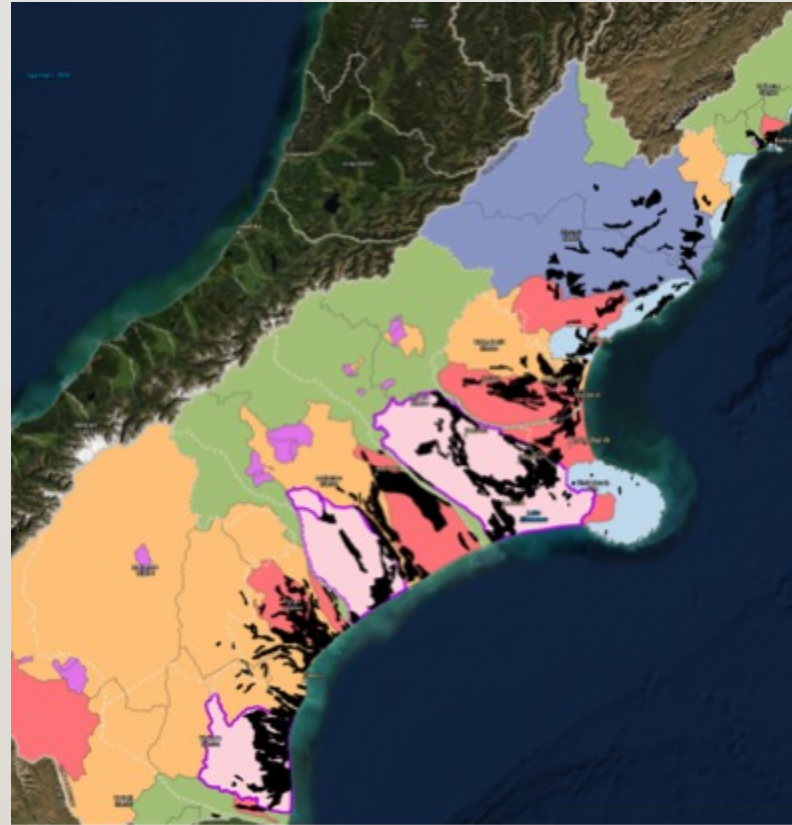


STATEMENT OF EVIDENCE BY MR NICHOLAS ASHLEY CONLAND

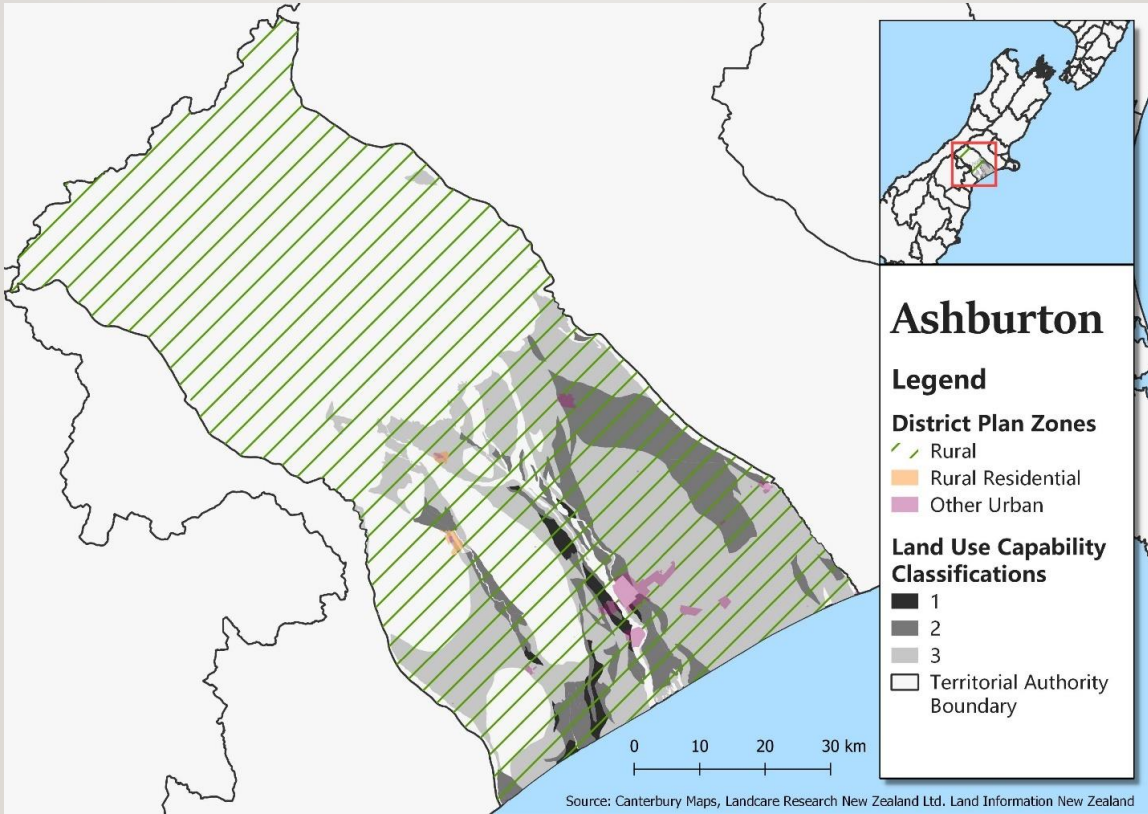
FOR POTATOES NEW ZEALAND

20TH OCTOBER 2020

HIGHLY PRODUCTIVE LAND AREAS IN EACH NAZ



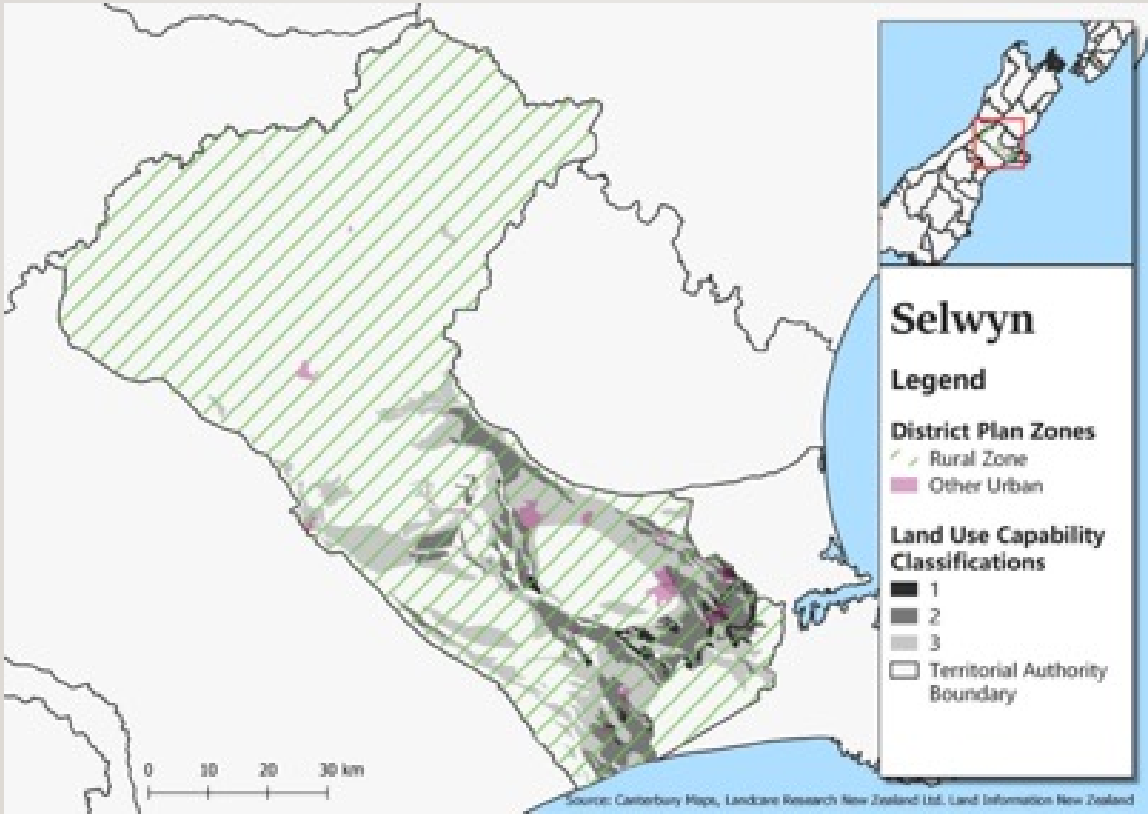
LUC SOILS FOR POTATO PRODUCTION



65,513ha

LUC I and LUC II in Ashburton District

LUC SOILS FOR POTATO PRODUCTION



52,649ha

LUC I and LUC II in Selwyn District

INTRODUCING POTATO ROTATIONS

Farm Type	Climate	Soil	Nitrogen leaching estimate (Kg N/ha/Yr)	Average (kg N/ha/yr)	Minus S1 (kg N/ha/yr)
Dairy	C1	S1	38	23	16
		S2	19		
		S3	13		
	C2	S1	24		
		S2	11		
		S3	6		
	C3	S1	50		
		S2	30		
		S3	19		
Dairy Support	C1	S1	24	21	19
		S2	20		
		S3	17		
	C2	S1	13		
		S2	11		
		S3	9		
	C3	S1	35		
		S2	31		
		S3	26		
Arable	C1	S1	18	16	14
		S2	15		
		S3	12		
	C2	S1	12		
		S2	11		
		S3	8		
	C3	S1	27		
		S2	23		
		S3	17		

	Potato rotation on (5 year) Arable	Potato rotation on (6 year) Arable	Potato rotation on (7 year) Arable	
Baseline	13%	11%	10%	+15%
	11%	9%	8%	
	10%	8%	7%	-15%
Baseline	Potato rotation on (5 year) Arable - Lismore	Potato rotation on (6 year) Arable - Lismore	Potato rotation on (7 year) Arable - Lismore	
	12%	10%	9%	+15%
	10%	9%	7%	
	9%	7%	6%	-15%

INTRODUCING POTATO ROTATIONS

Farm Type	Climate	Soil	Nitrogen leaching estimate (Kg N/ha/Yr)	Average (kg N/ha/yr)	Minus S1 (kg N/ha/yr)
Dairy	C1	S1	38	23	16
		S2	19		
		S3	13		
	C2	S1	24		
		S2	11		
		S3	6		
	C3	S1	50		
		S2	30		
		S3	19		
Dairy Support	C1	S1	24	21	19
		S2	20		
		S3	17		
	C2	S1	13		
		S2	11		
		S3	9		
	C3	S1	35		
		S2	31		
		S3	26		
Arable	C1	S1	18	16	14
		S2	15		
		S3	12		
	C2	S1	12		
		S2	11		
		S3	8		
	C3	S1	27		
		S2	23		
		S3	17		

	Potato rotation on (5 year) Dairy Support	Potato rotation on (6 year) Dairy Support	Potato rotation on (7 year) Dairy Support	
Baseline	13%	11%	9%	+15%
	11%	9%	8%	
	10%	8%	7%	-15%
Baseline	Potato rotation on (5 year) Dairy Support - Lismore	Potato rotation on (6 year) Dairy Support - Lismore	Potato rotation on (7 year) Dairy Support - Lismore	
	12%	10%	9%	+15%
	10%	9%	7%	
	9%	7%	6%	-15%

IMPROVING WATER QUALITY OUTCOMES

