






Designed by: GB

Date: 13/05/2020




Pipe key

-  Proposed Mainline
-  Proposed Bund Mainline

Sprinkler / Valve key

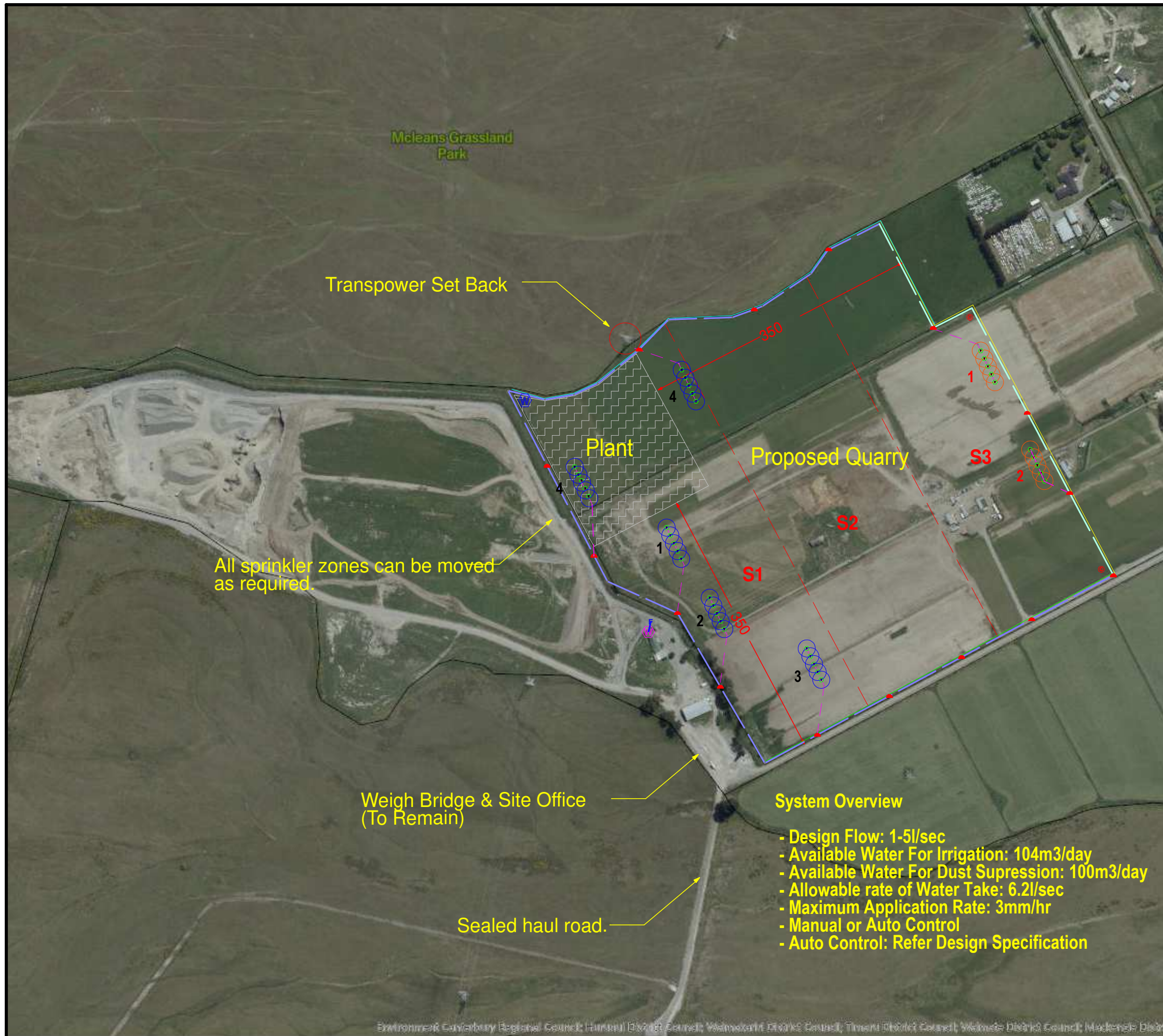
-  40mm Quick Coupling Valve Assembly (Existing)
-  40mm Quick Coupling Valve Assembly
-  Bore Water Supply - 5l/sec at 5 Bar -100m³/day
-  Monitoring Station
-  Tanker Fill

Proposed Irrigation Scheme

-  Stock Water Supply - 1.2 l/sec To Storage - 104m³/day (New storage tanks and pump TBC)
-  100m K Line Zone - 1l/sec @ 4 Bar Nozzle Pressure
-  Bund Irrigation Zone - 1l/sec @ 4 Bar Nozzle Pressure



**Concept Drawing Only
Issued For Consent**



System Overview

- Design Flow: 1-5l/sec
- Available Water For Irrigation: 104m³/day
- Available Water For Dust Suppression: 100m³/day
- Allowable rate of Water Take: 6.2l/sec
- Maximum Application Rate: 3mm/hr
- Manual or Auto Control
- Auto Control: Refer Design Specification

Environment Canterbury Regional Council; Hurunui District Council; Waimoana District Council; Timaru District Council; Waimate District Council; Mackenzie District Council