

Agenda 2020

Greater Christchurch Public Transport Joint Committee

Date: Wednesday, 19 February 2020

Time: 3.45pm – 5.00pm

Venue: Council Chamber, Environment Canterbury
200 Tuam Street, Christchurch



Greater Christchurch Public Transport Joint Committee

Membership

Independent Chair	Alister James
Christchurch City Council	Mayor Lianne Dalziel Councillor Mike Davidson Councillor Sara Templeton
Environment Canterbury	Chair Jenny Hughey Councillor Phil Clearwater Councillor Tane Apanui
Selwyn District Council	Councillor Nicole Reid
Waimakariri District Council	Mayor Dan Gordon
New Zealand Transport Agency	Jim Harland
Canterbury District Health Board	Dr Anna Stevenson

Greater Christchurch Public Transport Joint Committee

Table of Contents

1. Apologies	6
2. Conflicts of Interest	6
3. Matters Arising.....	7
4. Correspondence	7
5. Deputations and Petitions	7
6. Reports	8
6.1. Monitoring Report	8
6.2. Public Transport Timeline 2020	11
7. General Business	13
8. Next Meeting	13
9. Closure	13

1. Apologies

2. Conflicts of Interest

3. Matters Arising

4. Correspondence

5. Deputations and Petitions

6. Reports

6.1. Monitoring Report

Greater Christchurch Public Transport Joint Committee

Date of meeting	19 February 2020
Author	Len Fleete Senior Strategy Advisor, Public Transport, Environment Canterbury

Purpose

1. This paper provides members with an update on greater Christchurch patronage, as summarised in the attached monitoring dashboard.

Value proposition

2. The monitoring dashboard and provides an overview of key performance indicators for the greater Christchurch Metro network covering the last four months of 2019. This provides Joint Committee members with information on the effectiveness and performance of the Metro network.

Recommendations

That the Greater Christchurch Public Transport Joint Committee:

1. **Receives the Monitoring Report for information.**

Key monitoring results

3. Patronage for the current financial year is down 3.5% when compared to last financial year.
4. Farebox recovery is declining at around 1.0% when compared to last year.
5. The frequent Metro Line routes and city connector routes continue to carry the majority of passengers.
6. The frequent Metro Line routes are the heavy-lifters of the network, carrying proportionally more passengers than they cost.

Attachments

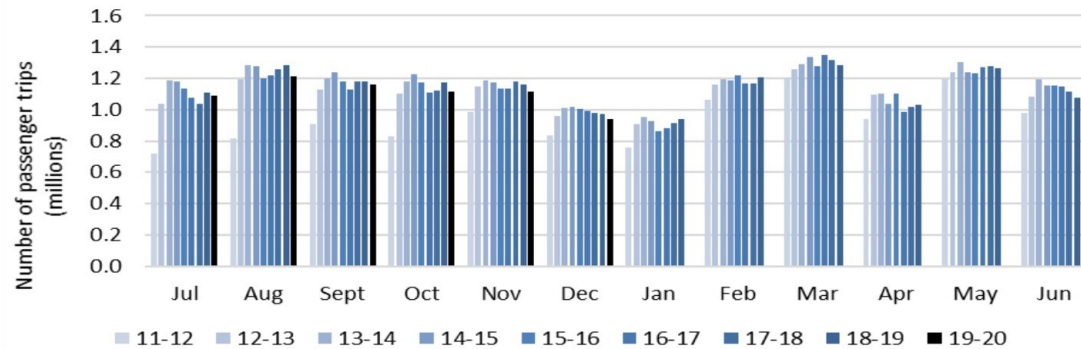
- Greater Christchurch Public Transport Monitoring Dashboard September to December 2019.

Greater Christchurch Public Transport Monitoring Dashboard September—December 2019 (3rd Quadrimester)

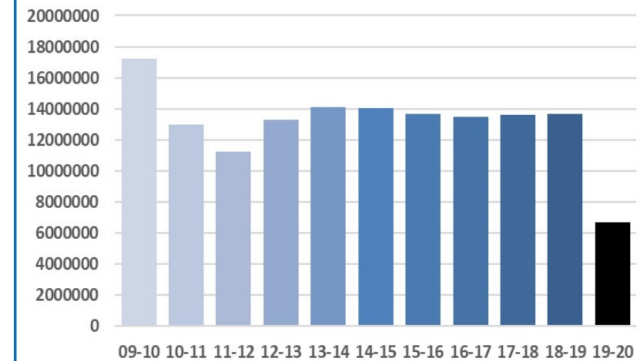
2020 Target: Increase patronage in Greater Christchurch and Timaru to 20 million passenger trips per year. **Farebox Target:** Maintain or improve on the current level ie 38.2%, by 2024.

Patronage

Greater Christchurch Monthly Patronage



Yearly Patronage 2009 - 2020



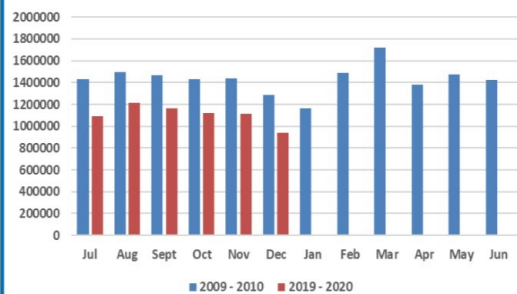
PATRONAGE BY TYPE

	Frequent	Connector	Local	Other
Sep-Dec 2019 patronage	2,422,978	1,110,860	683,564	119,051
% of total patronage	55.9%	25.6%	15.8%	2.7%
Sep-Dec 2019 vs Sep-Dec 2018	↓5.1%	↑4.5%	↓9.2%	↑2.7%

FREQUENT LINES

	Purple	Yellow	Orbiter	Orange	Blue
Sep-Dec 2019 vs Sep-Dec 2018	↓3.1%	↓4.2%	↓10.8%	↓3.7%	↓0.4%

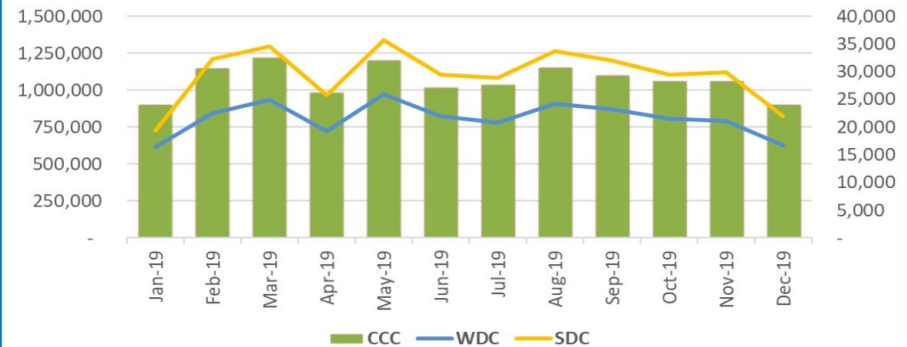
Monthly Patronage 2009 - 2010 vs 2019 - 2020



ROUTE DEFINITION:

Frequent = high patronage
Connector = patronage and coverage
Local = coverage and accessibility
Other = serve specific target markets e.g. schools

Monthly Patronage by Council



PATRONAGE BY COUNCIL

	Sep-19	Oct-19	Nov-19	Dec-19	Sep-Dec 2019 vs Sep-Dec 2018
Christchurch City Council (CCC)	1,104,893	1,066,727	1,065,013	903,898	↓3.7%
Waimakariri District Council (WDC)	23,244	21,516	21,107	16,733	↑1.2%
Selwyn District Council (SDC)	31,984	29,513	29,874	21,951	↑4.3%

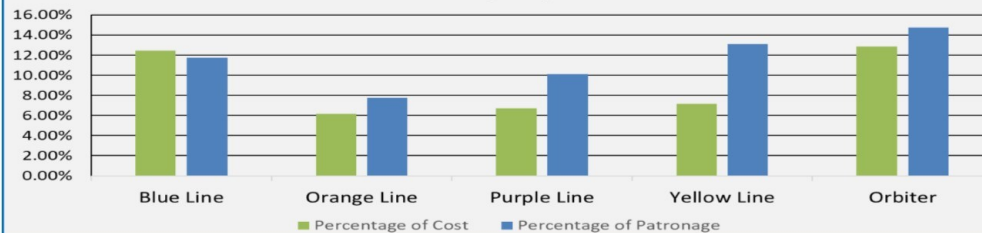
Performance

	MONTH				QUADRIMESTER		YEAR	
	Sep-19	Oct-19	Nov-19	Dec-19	Sep - Dec19	Sep-Dec19 vs Sep-Dec18	Year to date	19/20 vs 18/19
Patronage	1,160,121	1,117,756	1,115,994	942,582	4,336,453	↓3.4%	6,641,542	↓3.6%
Average passenger trips per weekday	45,169	40,907	43,093	37,577	41,687	↓1.9%	43,261	↓1.1%
Ave passenger trips per weekend day	23,502	22,110	20,954	21,227	21,948	↓5.7%	21,541	↓3.0%
Farebox Recovery	37.3	40.5	38.5	35.5	37.6	↓1.2	37.1	↓1.1

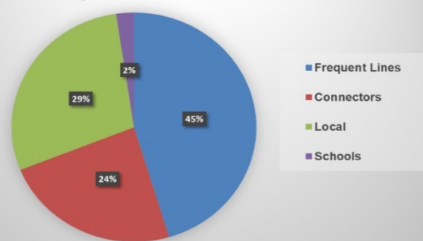
PAYMENT TYPE	Unique Metrocards	Metrocard %	Cash %	SuperGold card %	Adult %	Cash & Metrocard Transfers	
						%	2019 vs 2018
Sep-19	50,592	77.3%	11.3%	11.0%	62.3%	22.57%	↓9.1%
Oct-19	51,792	74.8%	13.1%	11.9%	69.9%	24.30%	↓8.0%
Nov-19	53,641	74.2%	13.6%	11.9%	69.1%	24.28%	↓6.2%
Dec-19	46,634	69.1%	16.4%	14.2%	75.1%	24.47%	↓4.8%

FINANCIALS	Sep-19	Sep-18	Oct-19	Oct-18	Nov-19	Nov-18	Dec-19	Dec-18
Average fare (exc GST)	\$1.62	\$1.55	\$1.69	\$1.61	\$1.70	\$1.62	\$1.78	\$1.69
Subsidy per passenger (exc GST)	\$2.60	\$2.60	\$2.71	\$2.45	\$3.09	\$2.41	\$3.67	\$3.50

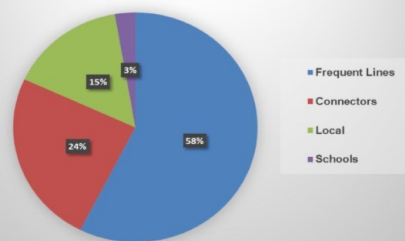
Metro Lines Cost vs Patronage September - December 2019



Percentage total cost per route type September - December 2019



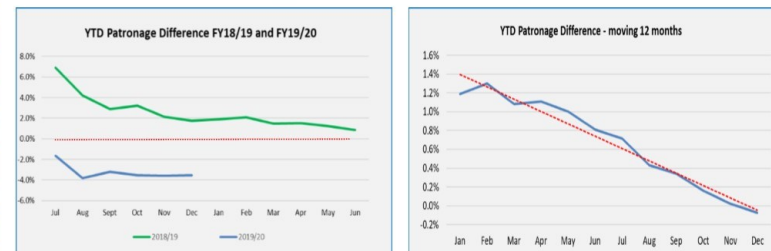
Percentage total patronage per route type September - December 2019



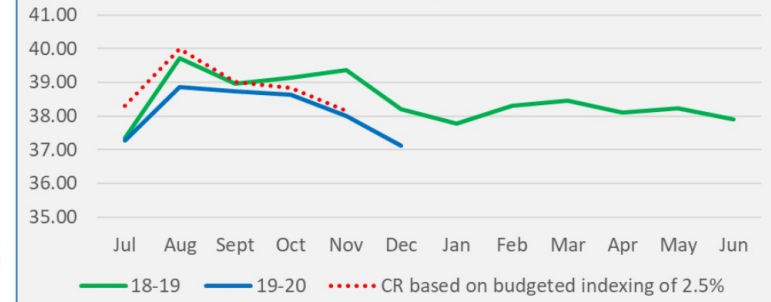
Customer Feedback

Feedback Type	Count				% of total passenger trips (Sep - Dec 2019)
	Sep-19	Oct-19	Nov-19	Dec-19	
Complaints	168	188	218	167	0.02%
Compliments	23	30	24	39	0.00%
General Feedback	52	61	50	34	0.00%

Patronage and Commerciality Trends



YTD Farebox Recovery Comparison FY2018/19 to FY2019/20



6.2. Public Transport Timeline 2020

Greater Christchurch Public Transport Joint Committee

Date of meeting	19 February 2020
Author	Len Fleete Senior Strategy Advisor, Public Transport, Environment Canterbury

Purpose

1. Attached to this paper is a schedule outlining projects and programmes developed by partner agencies to support and deliver the actions and intents set out in the recently adopted Regional Public Transport Plan.
2. This is an informational item setting out an indicative timeline of projects currently in train. Each of these deliverables contributes to an overall improvement in the state of public transport in the Greater Christchurch area.
3. Also included are indicative timing for quarterly fora, including joint committee meetings. These are based on the current arrangement of meetings being held on the third week of the appropriate month and may be subject to change.
4. It was agreed at the last meeting of the Joint Committee, prior to last year's elections, to report back as this may prove useful particularly as an introduction to the new committee.

Value proposition

5. To provide information on public transport projects and projects that support public transport, in the Greater Christchurch area.

Recommendations

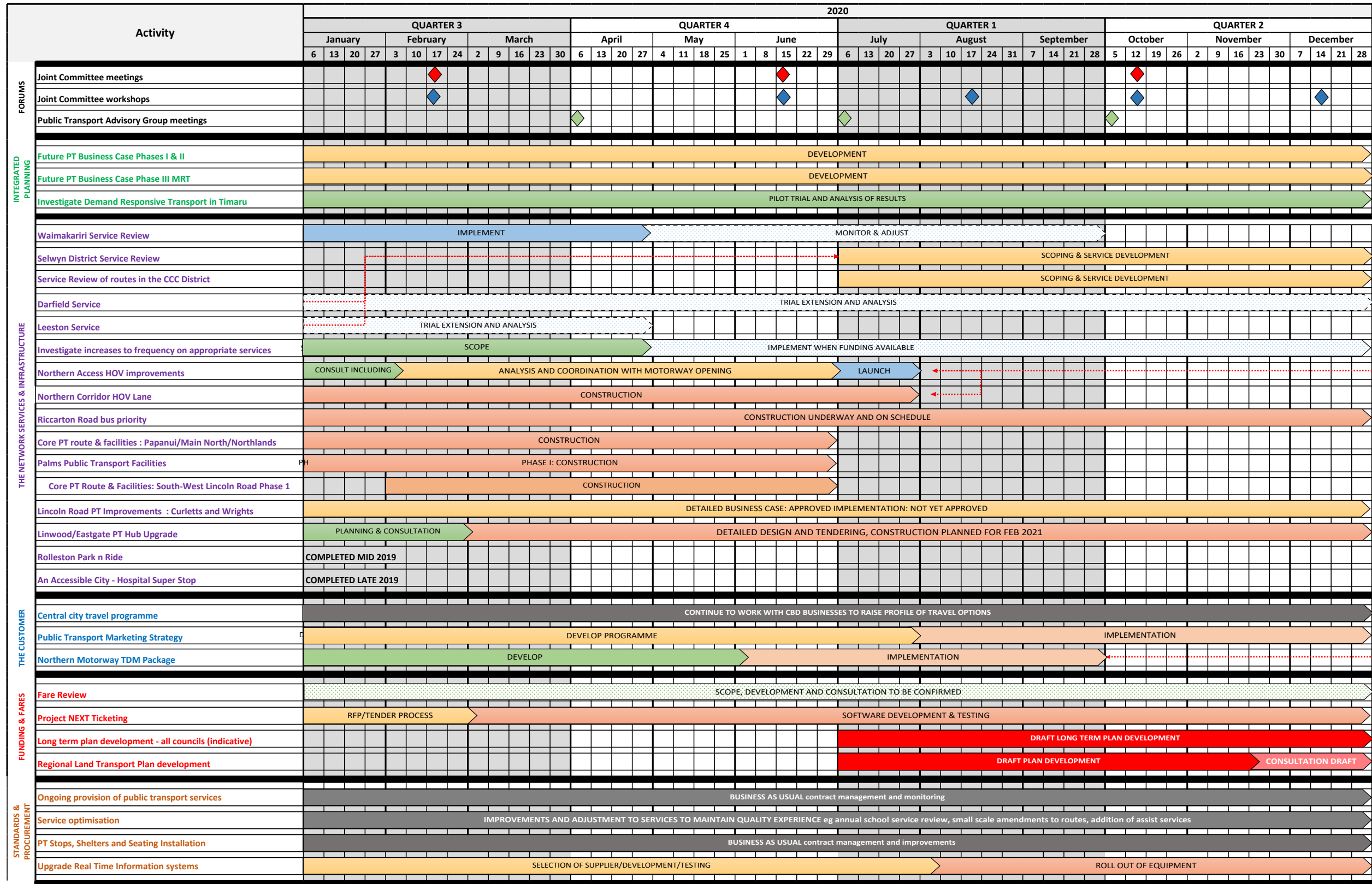
That the Greater Christchurch Public Transport Joint Committee:

1. **Receives the report "Public Transport Timeline 2020";**
2. **Agrees that the information can be updated in future progress reports and will be reported back to the Joint Committee at the start of each triennium and every six months thereafter.**

Attachments

- Public Transport Timeline 2020 spreadsheet

DRAFT Public Transport Timeline 2020 (indicative only)



7. General Business

8. Next Meeting

9. Closure