

5th Dec 2019

I wish to state that I strongly oppose this proposal and stand by all the points I made in my original submission.

I would like to emphasise some of the most important aspects

Roads - I do not believe that the transport infrastructure can handle this many heavy vehicle movements. The local roads struggle to cope with traffic levels as they stand, and are not wide enough nor well enough constructed to safely accommodate anywhere between 800 and 1200 heavy vehicle movements per day.

The junction at Jones road/Dawsons road/Main South road will not be able to function safely as proposed. With train movements closing Dawsons road it will not be possible for traffic to flow safely (or even flow at all) even with the suggested roundabout on Fulton Hogan land.

In the area we already have some of the most dangerous junctions in Selwyn, I fear they will become more hazardous.

Dust - we live in an area of dry summers and high winds. Dust carries long distances, and the finer particulate matter, which is more harmful, carries further. You will have heard from experts in the field that this particulate matter will easily reach Templeton. I do not believe that three metre bunds and tree plantings will in any way stop dust exiting the site.

Noise - I live 3 kms from my current nearest quarry and I can hear the operations most days, only when the wind blows directly towards the quarry do I not hear it. Templeton is only 600 metres from this proposed quarry.

Noise from heavy vehicle movements will affect even more people. It is disingenuous of Fulton Hogan to say the traffic noise levels will not increase with the extra traffic - maximum levels may not increase per se but it is of course the frequency with which these levels are reached that is important. One heavy vehicle per minute at night compared to one every fifteen minutes will not help local residents sleep.

Health - I believe that the health impacts of this quarry were it to go ahead will be numerous. I am sure other submitters have discussed the long term health implications of fine particulate matter and I am not an expert, but I am sure that harmful fine particulate matter will reach Templeton and beyond. There will be impacts on people's ability to sleep, the roads will be more dangerous. There will be impacts on psychological well being - the concern over whether it is safe to go to the park with the children, whether it is even safe to go out in the garden, concern about amenity values and property values.

Sticking to consent stipulations - I do not believe Fulton Hogan will stick to whatever constraints are placed on them if this proposal were to go ahead. Furthermore even if a limited consent is granted I have no doubt that they will in due course apply to push the boundaries.

Inadequate monitoring - ECAN openly admit that they have neither the staffing nor or funding to properly monitor and supervise the quarries as they currently exist. This situation would be even more hopeless with another large quarry.

But I feel that the most important aspect of this situation is the setting of a precedent.

If an application as big as this, and as near a population centre as this, is consented then it will send the message to all competing companies that pretty much any application will be consented.

Furthermore if it were to go ahead, because of the economic advantage it gives Fulton Hogan, then all competing companies will be not just encouraged to try and compete, they will be *forced* into it. Thus we will have a situation where the district is turned into a patchwork quilt of quarries, each impacting on the lives of local residents in the ways we have already outlined.

Please look at the attached map recently prepared on behalf the quarry industry, it highlights land considered to be suitable for quarrying, and

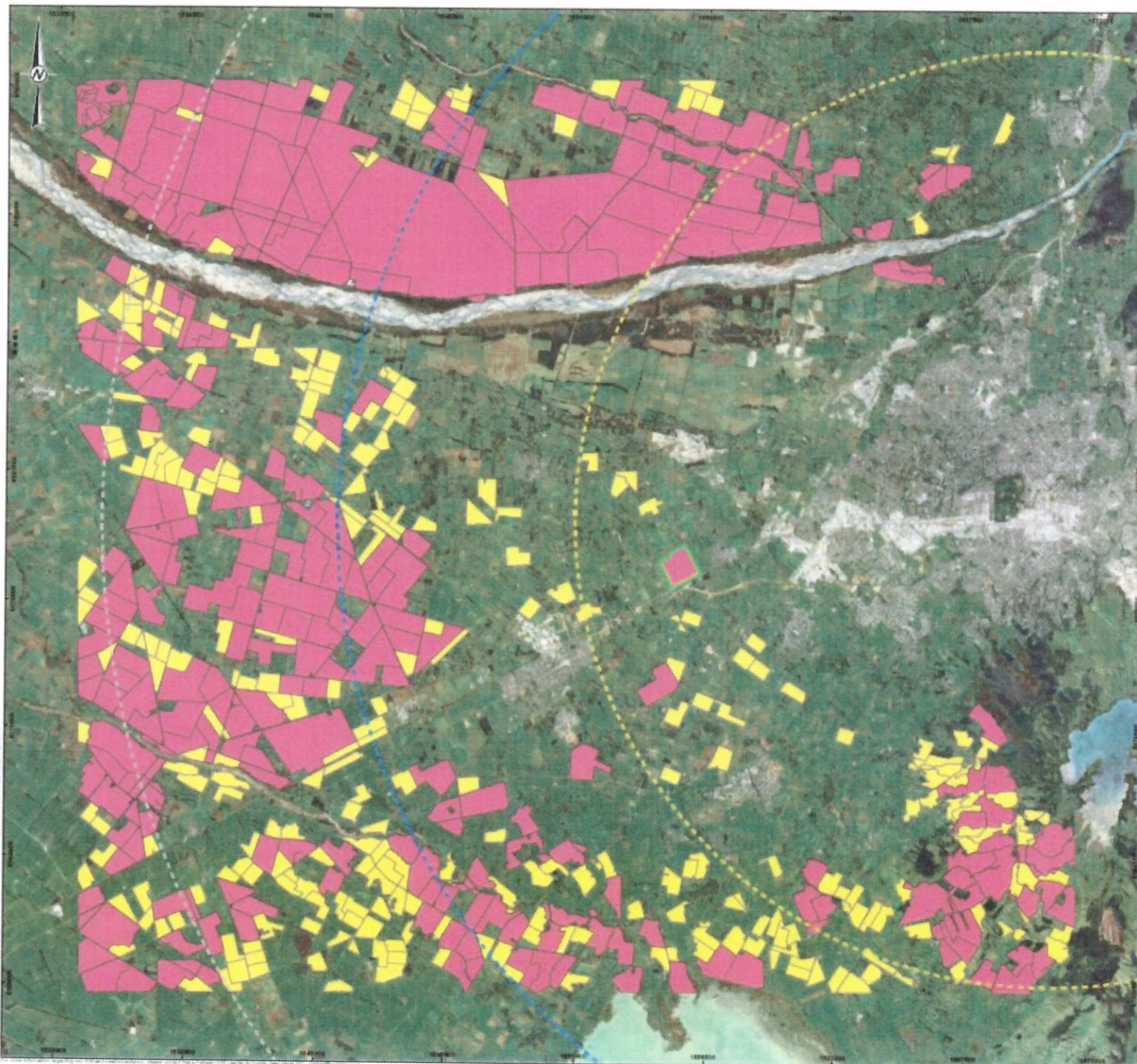
in large enough blocks. How many of these areas will be turned over to quarrying? How many more people would have their lives blighted? My property immediately borders one of these highlighted areas, and I can tell you that the worry of what might happen is not to be taken lightly.

I am thus speaking to you not only on behalf of the residents of Templeton, but of the entire district. If this proposal were to go ahead it would trigger a cascade of events the severity of which we will only understand once it has happened, and then it would be too late.

We live in times where big business often sets the agenda, and where care for individuals and the environment often takes a back seat. We must be cogent of what is at stake here and we need to focus on people and not profits. The people of Canterbury have long lived with quarries, the argument being that the quarries were there first. But now it's the residents of Templeton and the surrounding area who were here first, and we, as a society, must put them first.

Just because it is legal in the eyes of the RMA for a quarry to be established here it does not make it right.

To you as the panel making this judgement I see it this way - if you are utterly certain that the local roads can handle this extra traffic, utterly certain that there will be no increase in road traffic accidents, certain that no dust will reach Templeton, certain that no-one will hear the quarry operations, certain that no-one will be woken at night by truck movements, certain that there will be no impact on amenity values or anyone's quality of life, certain that no-one's health will be affected, certain that Fulton Hogan will stick to all consent stipulations, certain that there will be no negative impact on groundwater, in fact utterly certain that this will not impact anyone negatively, then go ahead and consent it. But if you have any doubts on these points whatsoever, then it cannot go ahead.



LEGEND

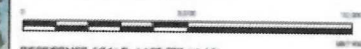
- 40km buffer from CBD
- 30km buffer from CBD
- 20km buffer from CBD
- Dawson road site boundary
- Land available > 80 ha
- Land available > 40 ha

NOTES

1. Aerial: LINZ and Eagle Technology, CC-BY-3.0-NZ.
2. Map image: © OpenStreetMap (and) contributors, CC-BY-SA. Sourced from the LINZ Data Service and licensed for re-use under the Creative Commons Attribution 3.0 New Zealand licence.
3. Schematic only, not to be interpreted as an engineering design or construction drawing.

COPYRIGHT

Information contained in this drawing is the copyright of Golder Associates (NZ) Ltd. Unauthorised use or reproduction of this plan either wholly or in part without written permission infringes copyright. © Golder Associates (NZ) Ltd.



REFERENCE SCALE: 1:160,000 (A3)

PROJECTION: NZGD 2000 New Zealand Transverse Mercator

CLIENT
FULTON HOGAN LIMITED

PROJECT
ROYDON QUARRY

TITLE
ANALYSIS OF POTENTIAL QUARRY SITES

CONSULTANT	YYYYMM-DD	NOVEMBER 2016
GOLDER	PREPARED	RK
	REVIEW	KB
	APPROVED	KB

PROJECT NO.	REPORT	REV	PAGE NO.
1781670	001	C	02

