



Ready to apply for a land use consent to farm?

The five steps to getting the thumbs up.

A website designed to help you with all the relevant forms and links can be found at ecan.govt.nz/farmers-hub

***You will not need a consent if:**

- You already have a farming land use consent; or
- Your farm is part of an Irrigation Scheme that has a resource consent that manages nutrients; or

- You have a water permit for irrigation, granted before 18 February 2016 that has commenced, and has conditions that limit the amount of nitrogen that may be leached and requires the preparation of a plan to mitigate the effects of nutrient loss to water.

Upper Waitaki

1 Determine whether you need a land use consent to farm

Consent is required* if:

You are in the **Haldon or Mid Catchment Zone**, and:
Your farm has 50ha or more of irrigation; or
You have an area of winter grazing that exceeds the limits in the table below:

ON A PROPERTY	WINTER GRAZING
Less than 100 ha	10 ha or more
Between 100 and 1000 ha	10% of the property or more
More than 1000 ha	100 ha or more

You are in the **Ahuriri or Upper Waitaki Hill Zone**, and:

Your farm has 50ha or more of authorised irrigation; or
Winter grazing is 20ha or more; or
After 13 February 2016, your irrigated or winter grazing areas have increased.

2 Implement Good Management Practices on your farm

The Primary Industry Sector has a set of agreed GMPs that can be used to improve water quality. Take a look at ecan.govt.nz/farmers-hub for help relating to your own operations.

3 Prepare your nutrient budget

All farms requiring a land use consent to farm need to prepare a nitrogen baseline and should check the Baseline GMP Loss Rate for their farm using the Farm Portal at www.farmportal.ecan.govt.nz

4 Create your Farm Environment Plan

All farmers requiring a consent to farm will need to prepare a FEP. Approved templates and industry help available at ecan.govt.nz/farmers-hub.

5 Apply for your land use consent to farm

Ready to apply for a resource consent? We offer a free one hour pre-application consultation to help you prepare.

See ecan.govt.nz/farmers-hub for information.



Need a hand? No worries!

Help is at hand

We know the land use consent to farm is a reasonably new requirement, so we're here to help. You can find the information you need by checking out our website or giving us a call.

Industry support

Industry organisations offer plenty of support and advice for preparing your Farm Environment Plan, calculating your nitrogen losses, and meeting Good Management Practice.

A variety of independent consultants also offer additional advice and support.

Talk to your Zone team

Our local zone team staff provide local assistance and advice regarding land management, consents and compliance.

Pre-application meeting

Get prepared before lodging your consent, with one hour free pre application advice from an Environment Canterbury consent planner.

You can find our contact details and information specific to your property by giving us a call or visiting our website.

0800 324 636

ecan.govt.nz/farmers-hub

Got a question?

We may have it covered here. If not, check out ecan.govt.nz/farmers-hub or give us a call.

What is defined as winter grazing?

The grazing of cattle between 1 May and 30 September, where the cattle are contained for break-feeding of in-situ brassica and root vegetable forage crops or for consuming supplementary feed that has been brought onto the property (defined in the Canterbury Land & Water Regional Plan).

What is a FEP and how does it help me?

Creating your Farm Environment Plan (FEP) will help you recognise on-farm environmental risks and set out a programme to manage those risks. Your FEP is unique to your property and will reflect the local climate and soils, the type of farming operation, and your goals and aspirations as the land user.

Your FEP will record your progress towards Good Management Practice, and demonstrate you're doing the right thing environmentally. You will need your FEP when you apply for your land use consent. An independent certified auditor will then audit the implementation of your FEP once your consent is in place.

Why do I need a nitrogen baseline?

A FEP ensures you are implementing Good Management Practices on your farm, while a nitrogen baseline ensures you are farming to your nitrogen limits. Your nitrogen baseline accounts for your previous nitrogen losses. Think of the limit as a measure of your environmental footprint which your business can operate within. The nitrogen budgets and the FEP will help you identify areas where improvement can be made and therefore provide valuable business planning tools.

Why do I need a Baseline GMP Loss Rate?

Most farms are required to meet their Baseline GMP Loss Rate by 2020 under the Canterbury Land & Water Regional Plan. The Baseline GMP Loss Rate is for the nitrogen baseline years 2009-13, operating at Good Management Practice, as estimated by the Farm Portal.

What do I do if my baseline GMP loss rate, from the Farm Portal, is questionable?

Your nutrient management advisor can use another method, which has been developed by Environment Canterbury, to confirm the accuracy of your baseline GMP loss rate from the Farm Portal. If there is an issue, your nutrient management advisor will be able to help you get a revised loss rate.

What if I am waiting to get my nitrogen baseline completed?

We acknowledge there have been delays in getting baselines completed. If this has affected you, please call Environment Canterbury Customer Services on **0800 324 636** to let us know that you're on a waitlist and the likely date your baseline will be completed.

How much will my consent application cost?

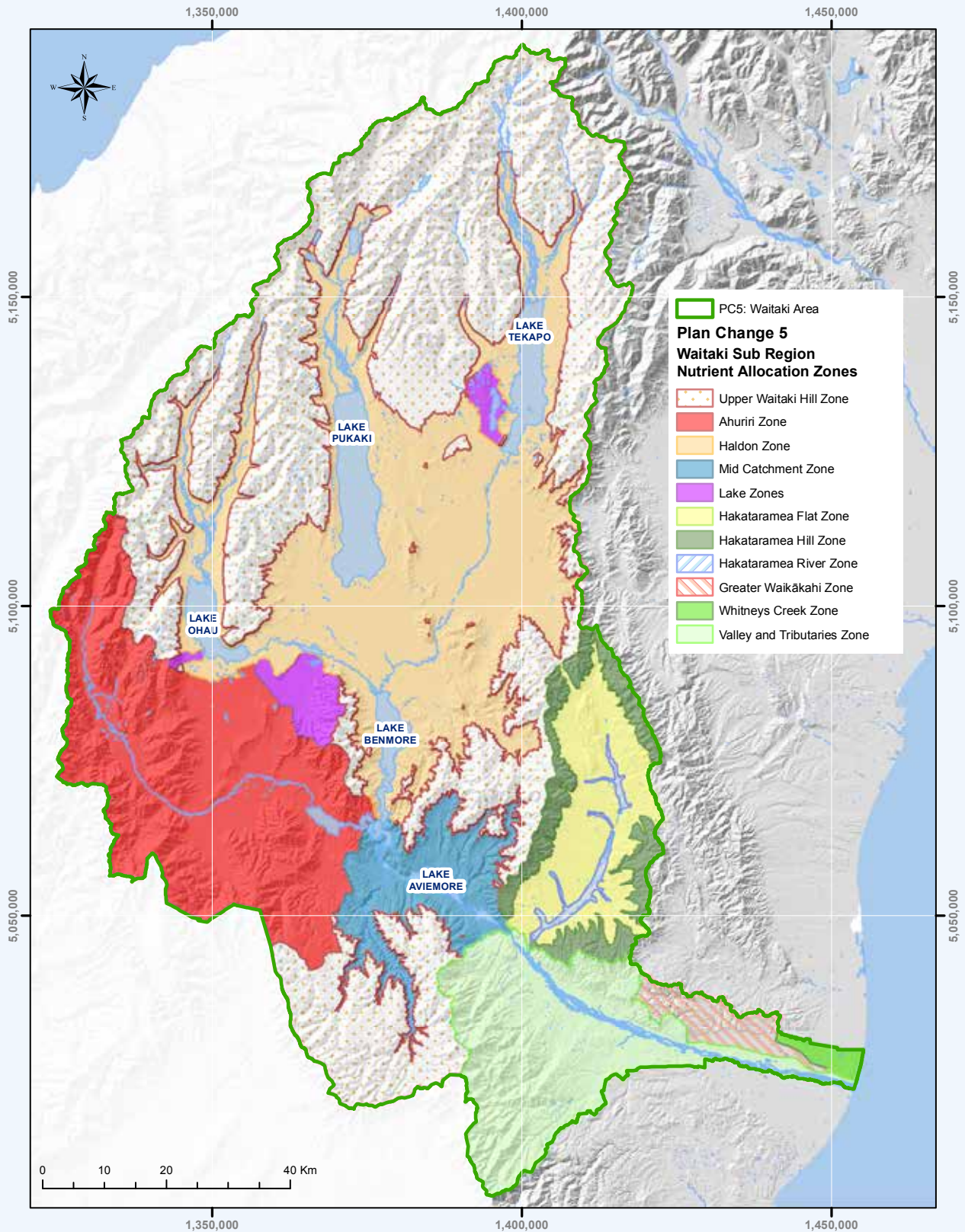
Most applications start at \$2350 including GST. An increase in costs may occur if the application is complex or bundled with another application.

Will I need to employ a consultant?

This is your choice. Many landowners are able to write their own FEP, with industry body assistance, while your nitrogen baseline will need to be done by a nutrient management advisor.

What is the extent of the Haldon, Mid Catchment, Ahuriri and Upper Waitaki Hill Zones?

The map below shows the location of these zones.



For information specific to your farm, detailed catchment maps or more on the rules in these areas please visit:

ecan.govt.nz/farmers-hub
0800 324 636