

PUBLIC NOTICE

PLAN CHANGE 2 TO THE CANTERBURY LAND AND WATER REGIONAL PLAN TO BE MADE OPERATIVE

At a Council meeting held on 10 May 2018, the Canterbury Regional Council (Environment Canterbury) approved Plan Change 2 to the Canterbury Land and Water Regional Plan, and in accordance with Clause 20 of Schedule 1 to the Resource Management Act 1991 resolved to make Plan Change 2 operative from 1 June 2018.

Plan Change 2

Plan Change 2 to the Canterbury Land and Water Regional Plan (LWRP) has been developed in collaboration with the Ashburton Zone Committee to deliver freshwater outcomes for the Hinds/Hekeao Plains catchment (see Figure 1 below).

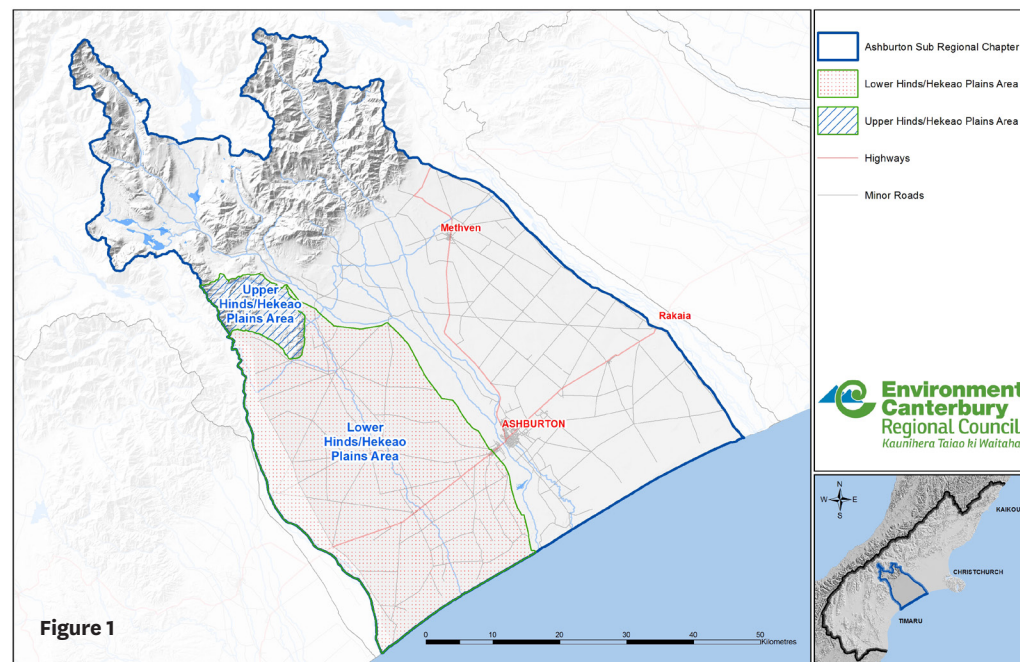


Figure 1

Ashburton Sub Regional Chapter
Land and Water Regional Plan

Plan Change 2 is part of a 'package of actions' developed to assist with delivery of outcomes described in the Hinds Plains Zone Implementation Programme Addendum (ZIPA). The plan change inserts new policies, rules and methods into the LWRP to regulate activities within the Hinds/Hekeao Plains catchment.

Inspection and availability of Plan Change 2 to the Canterbury Land and Water Regional Plan

From 1 June 2018, a copy of the LWRP incorporating changes made by Plan Change 2, can be accessed at the following locations (during normal office hours):

- The offices of Environment Canterbury at:
 - 200 Tuam St, Christchurch; 75 Church Street, Timaru; 73 Beach Road, Kaikōura.
- All open public libraries in the Canterbury Region.
- The head offices of the District/City Councils in the Canterbury Region.
- The Environment Canterbury website at www.ecan.govt.nz/lwrp-pc2

Paper copies of the Canterbury Land and Water Regional Plan (incorporating Plan Change 2) are available from Environment Canterbury's Customer Services for a cost as set in the Fees and Charges Policy 2015.

The LWRP can be downloaded free of charge from the Environment Canterbury website (www.ecan.govt.nz/lwrp), or alternatively a CD can be provided free of charge by contacting Customer Services on 353 9007 if you are calling from Christchurch, or on 0800 324 636 if calling from outside Christchurch, or by email to ecinfo@ecan.govt.nz.

This notice was first published on 23 May 2018, and a summary notice was published in the Christchurch Press and Ashburton Guardian on the same date.

**For all inquiries please contact Customer Services:
Christchurch 03 353 9007 or Freephone 0800 324 636**

**Bill Bayfield
CHIEF EXECUTIVE**