

Environnement Canterbury
(Submission on 10yr plan)

received in Tuam St 27/3/2018
→ received by Timaru Office 26/3/2018.

EC - CHCH	
FILE REF:	
DOCUMENT No.: 43032	
ACTION	INFO
27 MAR 2018	



Sustainable South Canterbury Trust

Chair: Brian Gallagher.

c/o R. Wells, KPMG, 24 The Terrace, Timaru 7910

Environment Canterbury

c/o Church St Offices, Timaru.

25 March 2018

Dear Sir/Madam

The Trust wish to make a **brief submission on the draft ECan ten year plan**, attached, and would like to speak to this at a hearing with councillors and staff, when we could also **show our building plans**, site photographs and evidence of strong community support. We welcome this opportunity for greater engagement with the Council in the years ahead.

Brian Gallagher (Chair), Rhys Taylor, Syd Horgan, Horst Elsen, Ross Wells.

March 2018. Submission to Environment Canterbury on Long Term Plan.

Scope for collaboration between Sustainable South Canterbury Trust (managing new Eco-Centre Timaru), Environment Canterbury and Timaru District Council, 2018-2028.

The soon-to-be –built Eco-Centre located in Timaru (www.ecocentretimaru.org) will provide an environmental sustainability education asset and service for Timaru and surrounding districts. It will be especially useful in youth engagement (LEOTC), urban and rural industry ‘good practice’ education for adults and household/community education, in the following subject areas relevant to the Council. The Sustainable South Canterbury Trust (The Trust) seeks a working partnership with the respective Councils and the following outlines the scope of the relevant topics:

AIR QUALITY.

Public demonstration of an older timber building re-lined better with insulation and ventilation aimed at warmth & comfort.

Demonstration of heat pump as ‘clean heating’, preferably solar Photovoltaic powered in the day-time through proposed collaboration with EnergySmart Timaru and Meridian Energy.

Demonstrations of secondary and new double glazing, multiple methods installed in one building.

Space for displays about wood stoves and clean burning from Ecan and suppliers.

Venue for educational events.

WATER QUALITY PROTECTION.

Rainwater collection to tank, filtering and on-site use demonstration (for garden and for a toilet).

Composting toilet demonstration – a waterless option – in collaboration with a supplier.

On-site rainwater swales, silt traps and piping to protect surface flows on a sealed former landfill site. Scope for ECan to demonstrate sediment control techniques to use on construction sites, as an educational aid? Space available to demonstrate bunding, filters and other industrial water pollution-control techniques.

Scope to present water quality monitoring results and ‘live’ flow data being gathered close to site (from Saltwater Creek at SH1, and in 2018 also from below the weir in the lagoon) at the Centre.

Scope for a display about how TDC protects water environment from tip leachate, and manages on-site stormwater.

Indoor and outdoor space for ECan public display about South Canterbury’s varied waterways and multiple water uses/values including irrigation, biodiversity, flood management, and TDC on its parks and reserves, walkways, urban storm water reticulation etc.

Timaru venue for events: catchment group and farmer-focussed meetings, ECan and TDC meetings.

COASTAL STORM EROSION PROCESSES, LONG-TERM SEA LEVEL RISE FROM CLIMATE CHANGE.

EcoCentre and Redruth landfill location is within Tsunami Risk Zone, coast is currently eroding towards Saltwater Creek & main rail line, long term sea level rise is relevant.

Indoor space for ECan & TDC displays and events: about coastal hazards, community resilience & Civil Defence, climate change impacts. Easy walking access to coastline to see impacts of change.

BIODIVERSITY

Utilising native plant species and promoting their 'strengths' from landowner perspective. Demonstration plantings have already commenced on site, using NZ natives as shelter and visual screening as part of the Otupua wetland and screening around the landfill site. These will be further extended with DOC input.

Indoor space for ECan (and Ngai Tahu?) funded displays and events: about protecting *taonga* biodiversity, encouraging use of native plants in the managed landscapes of town and country, avoiding & controlling spread of pest plants including urban garden weeds.

Scope to add DOC/Ngai Tahu display about how the native plants support endemic wildlife (Katipo spider, long-tailed Bats, Skinks, Whitebait spp, Kereru, etc), including displays of the natural flora and fauna of the adjacent coastal beach area, the Saltwater Creek catchment and wetland area.

There is enough adjacent outdoor space to host a plant nursery project specialising in resilient coastal native species, for use in public restoration plantings by schools, NGOs, QEII covenant owners, etc. (Could follow the lead of DOC Motukarara nursery, perhaps as an 'outreach' from there?) Would need grant aid from DOC and others to set up, might be co-managed with a community food garden?

Note our adjacent location is adjacent to the New Zealand Raptor Trust which helps with the rehabilitation of injured birds.

ACTIVE TRANSPORT

Photovoltaic Installation at the Centre could charge E-car or van, and E-bike batteries. Maybe offer a bike hire option for use on an off-road coastal route to and around Otupua Wetland? Coastal walkway is accessible, but now subject to erosion – for recreational activity on foot and on bikes.

Scope for indoor ECan display, perhaps in collaboration with South Canterbury DHB, on health and traffic congestion benefits of active transport, Timaru scheduled buses and on rural community buses. Scope to add the EcoCentre and Redruth recycling park to a bus route?

WASTE MINIMISATION

The building itself will model materials reclaim and waste avoidance, as does the adjacent Crows' Nest reuse shop. Non-waste-generating consumer equipment & supplies are sold in the Crow's Nest.

Scope for indoor and outdoor educational displays and artworks (garden structures and sculptures) based on reuse of otherwise wasted materials. Venue for events & courses, including collaboration with Sustainable Living Education Trust NZ (of which TDC is a member).

PROJECT ECONOMICS

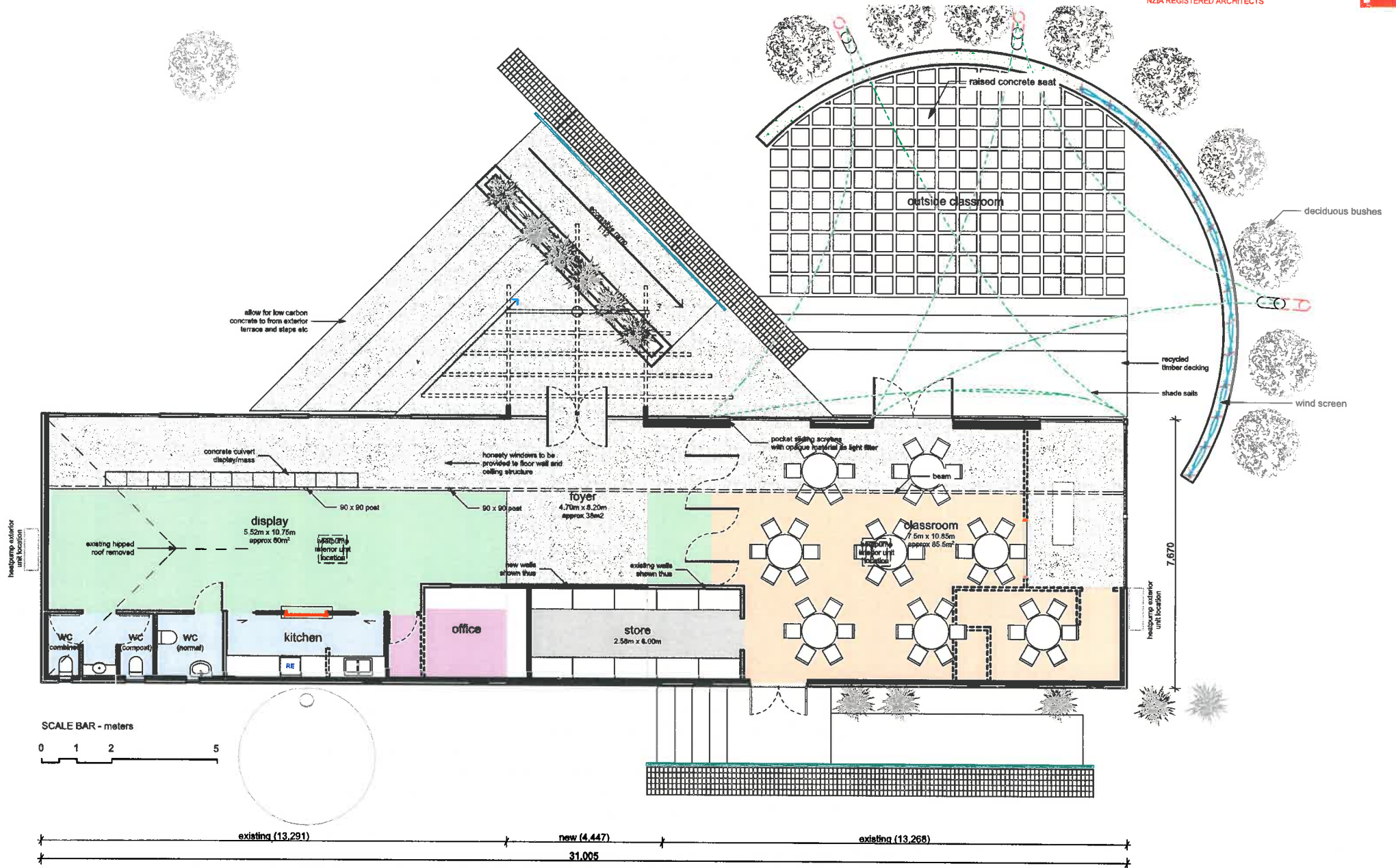
The Trust has secured the lease of land located on the Timaru District Council closed landfill area at Redruth in Timaru to develop the Eco-Centre. The project encompasses a 5 year capital development programme with an estimated total cost of the project being \$1,347,000. Eco-Centre building and site plans could be displayed at a presentation to Council.

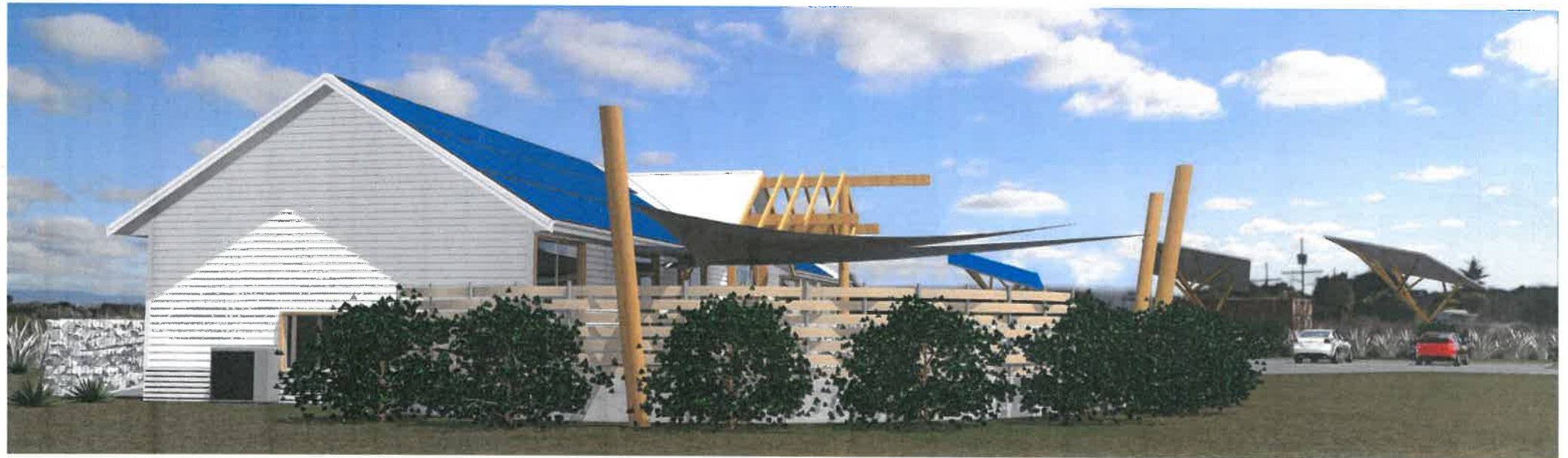
Capital Expenditure	2018	2019	2020	2021	2022
Design & Contract Administration	\$56,600	\$2,000	\$0	\$0	\$0
Eco-Centre Construction	\$404,827	\$615,538	\$0	\$0	\$0
Services	\$40,000		\$0	\$0	\$0
Roading	\$0	\$40,000	\$0	\$0	\$0
Classroom & Display Resources	\$0	\$40,000	\$0	\$0	\$0
Natural Discovery	\$0	\$0	\$25,000	\$25,000	\$25,000
Nursery/community Garden	\$0	\$23,000	\$5,000	\$45,000	\$0
Annual Totals	\$501,427	\$720,538	\$30,000	\$70,000	\$25,000

The immediate priority for the project is to establish the relocated donated building currently stored onsite onto a secure foundation. To date the Trust has funded the building relocation from reserve funds and has recently been successful with funding of \$150,000 from the Community Trust of Mid-South Canterbury.

The Trust is seeking a contribution of \$150,000 from the Regional Council towards the capital development of the Eco-Centre and this may be on a pro-rata basis over 2-3 years. A similar request is being made from the Timaru District Council as part the Council's Long Term Plan. In addition the Trust is seeking an annual contribution of \$10,000 from the Regional Council towards operating costs of the Centre, which will operate as a break-even budget. This contribution will enable priority access for the Regional Council to use the Eco-Centre in-conjunction with the Timaru District Council.

Operating Income		Operating Expenses	
TDC - Grant	\$ 10,000	Display costs	\$ 4,000
Ecan - Grant	\$ 10,000	General Expenses	\$ 4,000
Sponsorship	\$ 10,000	Insurance & Legal	\$ 5,000
Donations	\$ 500	Administration	\$ 5,000
Charges/Hire	\$ 2,000	Repairs/Maintenance/Services	\$ 13,000
Total Income	\$ 32,500	Total Expenses	\$ 31,000
		Net Surplus/(Deficit)	\$ 1,500





From: Rhys Taylor
Sent: Monday, 26 March 2018 10:18 a.m.
To: Mailroom Mailbox
Subject: LTP submission - forwarded
Attachments: ECan Submission from SSCTrust 2018.pdf

LTP submission. This was delivered today to Timaru office in hard copy, for internal mail, but here's the electronic version. Use 0274502470 (Brian Gallagher) as a contact number for the Sustainable South Canterbury Trust.

Rhys Taylor
Community Engagement, OTOP Zone

Part time contractor - best contact days are Mon-Weds

Rhys Taylor
Community Engagement Coordinator - OOP Zone'
Implementation Support
021 462 260
03 6938726



Sustainable South Canterbury Trust

Chair: Brian Gallagher.

c/o R. Wells, KPMG, 24 The Terrace, Timaru 7910

Environment Canterbury

c/o Church St Offices, Timaru.

25 March 2018

Dear Sir/Madam

The Trust wish to make a brief submission on the draft ECan ten year plan, attached, and would like to speak to this at a hearing with councillors and staff, when we could also show our building plans, site photographs and evidence of strong community support. We welcome this opportunity for greater engagement with the Council in the years ahead.

Brian Gallagher (Chair), Rhys Taylor, Syd Horgan, Horst Elsen, Ross Wells.

March 2018. Submission on Long Term Plan.

Scope for collaboration between Sustainable South Canterbury Trust (managing Ecocentre Timaru), Environment Canterbury and Timaru District Council, 2018-2028.

The soon-to-be –built EcoCentre Timaru (www.ecocentretimaru.org) will provide an environmental sustainability education asset and service for Timaru and surrounding districts. It could be especially useful in youth engagement (LEOTC), urban and rural industry ‘good practice’ education for adults and household/community education, in the following subject areas relevant to the Council. The Sustainable South Canterbury Trust seeks a working partnership, on:

AIR QUALITY.

Public demonstration of an older timber building re-lined better with insulation and ventilation aimed at warmth & comfort.

Demonstration of heat pump as ‘clean heating’, preferably solar PV powered in the day-time. Proposed collaboration with EnergySmart Timaru and Meridian Energy.

Demonstrations of secondary and new double glazing, multiple methods installed in one building.

Space for displays about wood stoves and clean burning from ECan, if ECan wishes to provide?

Venue for educational events.

WATER QUALITY PROTECTION.

Rainwater collection to tank, filtering and on-site use demonstration (for garden and for a toilet).

Composting toilet demonstration – a waterless option – in collaboration with a supplier.

On-site rainwater swales, silt traps and piping to protect surface flows on a sealed former landfill site. Scope for ECan to demonstrate sediment control techniques to use on construction sites, as an educational aid? Space available to demonstrate bunding, filters and other industrial water pollution-control techniques.

Scope to present water quality monitoring results and ‘live’ flow data being gathered close to site (from Saltwater Creek at SH1, and in 2018 also from below the weir in the lagoon) at the Centre.

Scope for a display about how TDC protects water environment from tip leachate, and manages on-site stormwater.

Indoor and outdoor space for ECan public display about South Canterbury’s varied waterways and multiple water uses/values including irrigation, biodiversity, flood management, and TDC on its parks and reserves, walkways, urban storm water reticulation etc.

Timaru venue for events: catchment group and farmer-focussed meetings, ECan and TDC meetings.

COASTAL STORM EROSION PROCESSES, LONG-TERM SEA LEVEL RISE from climate change.

EcoCentre and Redruth landfill location is within Tsunami Risk Zone, coast is currently eroding towards Saltwater Creek & main rail line, long term sea level rise is relevant.

Indoor space for ECan & TDC displays and events: about coastal hazards, community resilience & CD, climate change impacts. Easy walking access to coastline to see impacts of change.

BIODIVERSITY – native plant species and promoting their ‘strengths’ from landowner perspective.

Demonstration plantings already commenced on site, using NZ natives as shelter and visual screening. These will be extended with DOC input.

Indoor space for ECan (and Ngai Tahu?) funded displays and events: about protecting *taonga* biodiversity, encouraging use of native plants in the managed landscapes of town and country, avoiding & controlling spread of pest plants including urban garden weeds.

Scope to add DOC/NgaiTahu display about how the native plants support endemic wildlife (Katipo spider, long-tailed Bats, Skinks, Whitebait spp, Kereru, etc)

Enough adjacent outdoor space to host a plant nursery project specialising in resilient coastal native species, for use in public restoration plantings by schools, NGOs, QEII covenant owners, etc. (Could follow the lead of DOC Motukarara nursery, perhaps as an ‘outreach’ from there?) Would need grant aid from DOC and others to set up, might be co-managed with a community food garden?

Note our adjacent location by ‘Raptor Trust’ project, also with TDC landlord.

ACTIVE TRANSPORT

PV Installation at the Centre could charge E-car or van, and E-bike batteries. Maybe offer a bike hire option for use on an off-road coastal route to and around Otipua Wetland? Coastal walkway is accessible, but now subject to erosion – for recreational activity on foot and on bikes.

Scope for indoor ECan display, perhaps in collaboration with South Canterbury DHB, on health and traffic congestion benefits of active transport, Timaru scheduled buses and on rural community buses. Scope to add the EcoCentre and Redruth recycling park to a bus route?

WASTE MINIMISATION

The building itself will model materials reclaim and waste avoidance, as does the adjacent Crows’ Nest reuse shop. Non-waste-generating consumer equipment & supplies are sold in the Crow’s Nest.

Scope for indoor and outdoor educational displays and artworks (garden structures and sculptures) based on reuse of otherwise wasted materials. Venue for events & courses, including collaboration with Sustainable Living Education Trust NZ (of which TDC is a member).

From: Rhys Taylor
Sent: Monday, 26 March 2018 3:41 p.m.
To: Mailroom Mailbox
Subject: RE: LTP submission from SSCT - updated
Attachments: SSCT Ecocentre Timaru Plan 2018.pdf; SSCT Eco-Centre architect-impressions.pdf; SSCT Submission to Ecan LTP 2018-2028final.pdf

Hello colleagues. The scanned version of the submission from Sustainable South Canterbury Trust that I forwarded early today had a final page and illustrations missing. Please substitute the attached 4 page version and two pictures for the more complete picture! Discard the 10am version please.

Rhys Taylor
Community Engagement, OTOP Zone

From: Rhys Taylor
Sent: Monday, 26 March 2018 10:18 AM
To: Mailroom Mailbox <mailroom@ecan.govt.nz>
Subject: LTP submission - forwarded

LTP submission. This was delivered today to Timaru office in hard copy, for internal mail, but here's the electronic version. Use 0274502470 (Brian Gallagher) as a contact number for the Sustainable South Canterbury Trust.

Rhys Taylor
Community Enagagement, OTOP Zone



Sustainable South Canterbury Trust

Chair: Brian Gallagher.

c/o R. Wells, KPMG, 24 The Terrace, Timaru 7910

Environment Canterbury

c/o Church St Offices, Timaru.

25 March 2018

Dear Sir/Madam

The Trust wish to make a brief submission on the draft ECan ten year plan, attached, and would like to speak to this at a hearing with councillors and staff, when we could also show our building plans, site photographs and evidence of strong community support. We welcome this opportunity for greater engagement with the Council in the years ahead.

Brian Gallagher (Chair), Rhys Taylor, Syd Horgan, Horst Elsen, Ross Wells.

March 2018. Submission to Environment Canterbury on Long Term Plan.

Scope for collaboration between Sustainable South Canterbury Trust (managing new Eco-Centre Timaru), Environment Canterbury and Timaru District Council, 2018-2028.

The soon-to-be –built Eco-Centre located in Timaru (www.ecocentretimaru.org) will provide an environmental sustainability education asset and service for Timaru and surrounding districts. It will be especially useful in youth engagement (LEOTC), urban and rural industry ‘good practice’ education for adults and household/community education, in the following subject areas relevant to the Council. The Sustainable South Canterbury Trust (The Trust) seeks a working partnership with the respective Councils and the following outlines the scope of the relevant topics:

AIR QUALITY.

Public demonstration of an older timber building re-lined better with insulation and ventilation aimed at warmth & comfort.

Demonstration of heat pump as ‘clean heating’, preferably solar Photovoltaic powered in the day-time through proposed collaboration with EnergySmart Timaru and Meridian Energy.

Demonstrations of secondary and new double glazing, multiple methods installed in one building.

Space for displays about wood stoves and clean burning from Ecan and suppliers.

Venue for educational events.

WATER QUALITY PROTECTION.

Rainwater collection to tank, filtering and on-site use demonstration (for garden and for a toilet).

Composting toilet demonstration – a waterless option – in collaboration with a supplier.

On-site rainwater swales, silt traps and piping to protect surface flows on a sealed former landfill site. Scope for ECan to demonstrate sediment control techniques to use on construction sites, as an educational aid? Space available to demonstrate bunding, filters and other industrial water pollution-control techniques.

Scope to present water quality monitoring results and ‘live’ flow data being gathered close to site (from Saltwater Creek at SH1, and in 2018 also from below the weir in the lagoon) at the Centre.

Scope for a display about how TDC protects water environment from tip leachate, and manages on-site stormwater.

Indoor and outdoor space for ECan public display about South Canterbury’s varied waterways and multiple water uses/values including irrigation, biodiversity, flood management, and TDC on its parks and reserves, walkways, urban storm water reticulation etc.

Timaru venue for events: catchment group and farmer-focussed meetings, ECan and TDC meetings.

COASTAL STORM EROSION PROCESSES, LONG-TERM SEA LEVEL RISE FROM CLIMATE CHANGE.

EcoCentre and Redruth landfill location is within Tsunami Risk Zone, coast is currently eroding towards Saltwater Creek & main rail line, long term sea level rise is relevant.

Indoor space for ECan & TDC displays and events: about coastal hazards, community resilience & Civil Defence, climate change impacts. Easy walking access to coastline to see impacts of change.

BIODIVERSITY

Utilising native plant species and promoting their 'strengths' from landowner perspective. Demonstration plantings have already commenced on site, using NZ natives as shelter and visual screening as part of the Otipua wetland and screening around the landfill site. These will be further extended with DOC input.

Indoor space for ECan (and Ngai Tahu?) funded displays and events: about protecting *taonga* biodiversity, encouraging use of native plants in the managed landscapes of town and country, avoiding & controlling spread of pest plants including urban garden weeds.

Scope to add DOC/Ngai Tahu display about how the native plants support endemic wildlife (Katipo spider, long-tailed Bats, Skinks, Whitebait spp, Kereru, etc), including displays of the natural flora and fauna of the adjacent coastal beach area, the Saltwater Creek catchment and wetland area.

There is enough adjacent outdoor space to host a plant nursery project specialising in resilient coastal native species, for use in public restoration plantings by schools, NGOs, QEII covenant owners, etc. (Could follow the lead of DOC Motukarara nursery, perhaps as an 'outreach' from there?) Would need grant aid from DOC and others to set up, might be co-managed with a community food garden?

Note our adjacent location is adjacent to the New Zealand Raptor Trust which helps with the rehabilitation of injured birds.

ACTIVE TRANSPORT

Photovoltaic Installation at the Centre could charge E-car or van, and E-bike batteries. Maybe offer a bike hire option for use on an off-road coastal route to and around Otipua Wetland? Coastal walkway is accessible, but now subject to erosion – for recreational activity on foot and on bikes.

Scope for indoor ECan display, perhaps in collaboration with South Canterbury DHB, on health and traffic congestion benefits of active transport, Timaru scheduled buses and on rural community buses. Scope to add the EcoCentre and Redruth recycling park to a bus route?

WASTE MINIMISATION

The building itself will model materials reclaim and waste avoidance, as does the adjacent Crows' Nest reuse shop. Non-waste-generating consumer equipment & supplies are sold in the Crow's Nest.

Scope for indoor and outdoor educational displays and artworks (garden structures and sculptures) based on reuse of otherwise wasted materials. Venue for events & courses, including collaboration with Sustainable Living Education Trust NZ (of which TDC is a member).

PROJECT ECONOMICS

The Trust has secured the lease of land located on the Timaru District Council closed landfill area at Redruth in Timaru to develop the Eco-Centre. The project encompasses a 5 year capital development programme with an estimated total cost of the project being \$1,347,000. Eco-Centre building and site plans could be displayed at a presentation to Council.

Capital Expenditure	2018	2019	2020	2021	2022
Design & Contract Administration	\$56,600	\$2,000	\$0	\$0	\$0
Eco-Centre Construction	\$404,827	\$615,538	\$0	\$0	\$0
Services	\$40,000		\$0	\$0	\$0
Roading	\$0	\$40,000	\$0	\$0	\$0
Classroom & Display Resources	\$0	\$40,000	\$0	\$0	\$0
Natural Discovery	\$0	\$0	\$25,000	\$25,000	\$25,000
Nursery/community Garden	\$0	\$23,000	\$5,000	\$45,000	\$0
Annual Totals	\$501,427	\$720,538	\$30,000	\$70,000	\$25,000

The immediate priority for the project is to establish the relocated donated building currently stored onsite onto a secure foundation. To date the Trust has funded the building relocation from reserve funds and has recently been successful with funding of \$150,000 from the Community Trust of Mid-South Canterbury.

The Trust is seeking a contribution of \$150,000 from the Regional Council towards the capital development of the Eco-Centre and this may be on a pro-rata basis over 2-3 years. A similar request is being made from the Timaru District Council as part the Council's Long Term Plan. In addition the Trust is seeking an annual contribution of \$10,000 from the Regional Council towards operating costs of the Centre, which will operate as a break-even budget. This contribution will enable priority access for the Regional Council to use the Eco-Centre in-conjunction with the Timaru District Council.

Operating Income		Operating Expenses	
TDC - Grant	\$ 10,000	Display costs	\$ 4,000
Ecan - Grant	\$ 10,000	General Expenses	\$ 4,000
Sponsorship	\$ 10,000	Insurance & Legal	\$ 5,000
Donations	\$ 500	Administration	\$ 5,000
Charges/Hire	\$ 2,000	Repairs/Maintenance/Services	\$ 13,000
Total Income	\$ 32,500	Total Expenses	\$ 31,000
		Net Surplus/(Deficit)	\$ 1,500

