
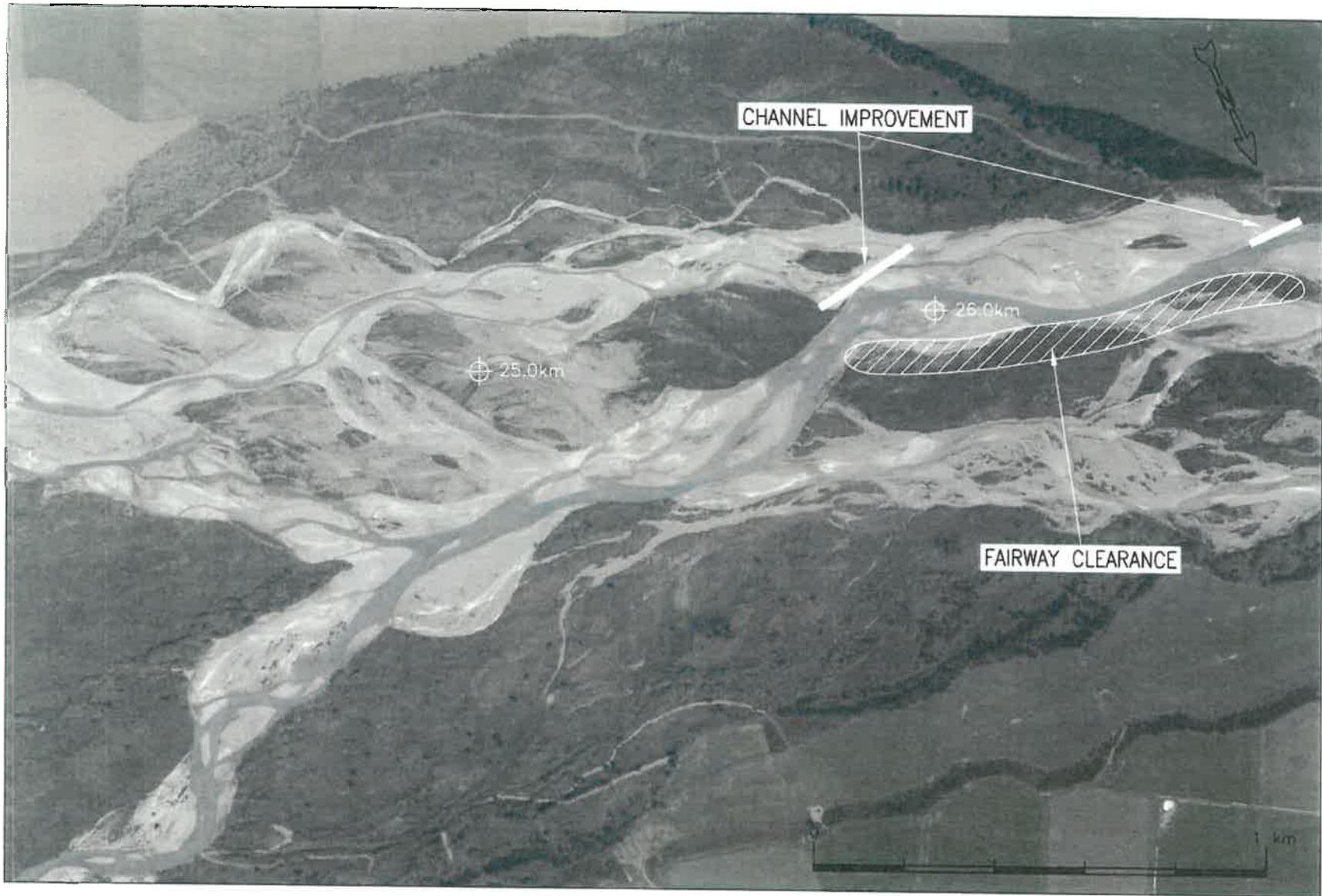




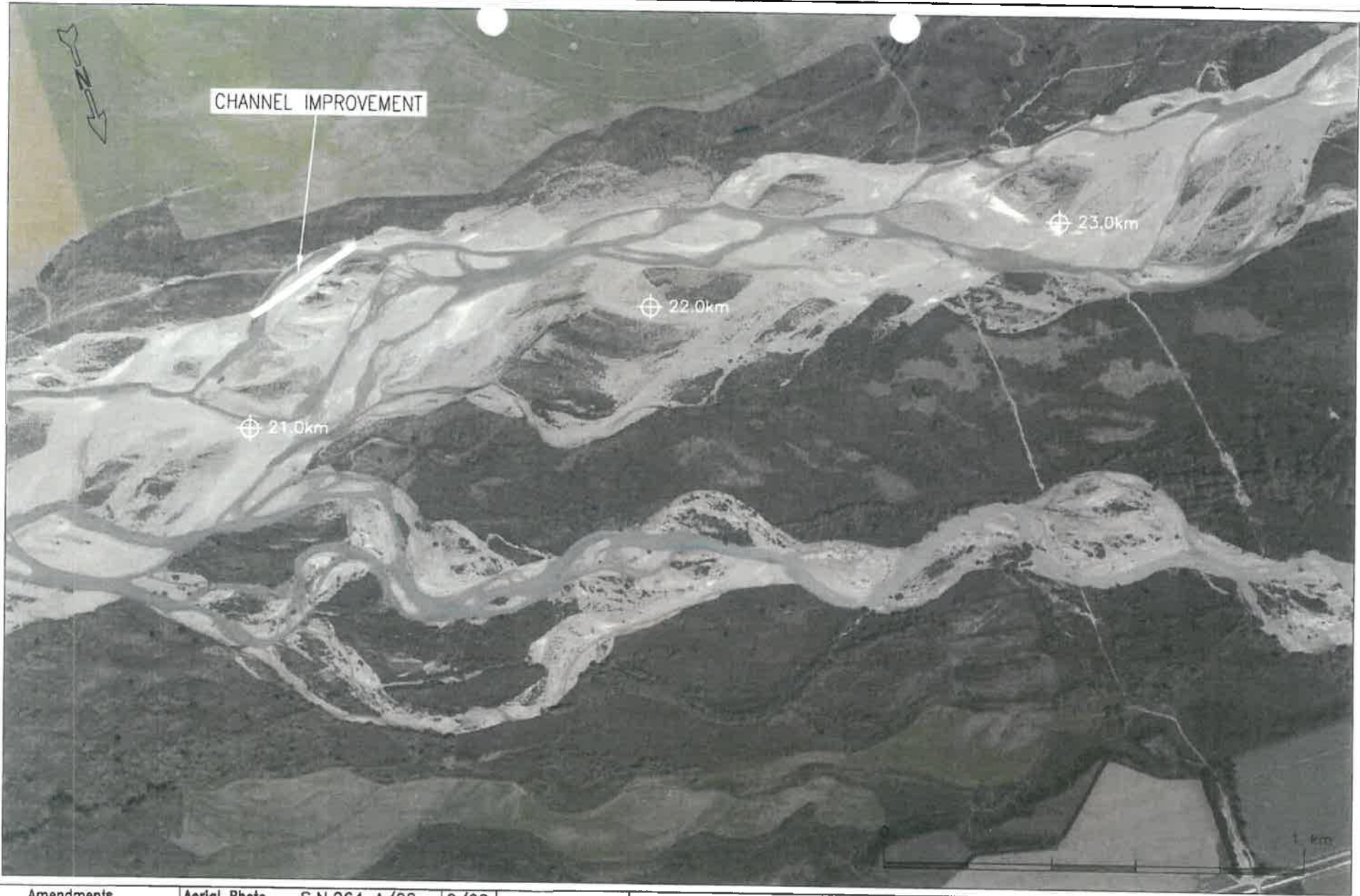
Amendments		Aerial Photo	S.N.264 A/2	2/08		Environment Canterbury Rating Districts Works Programme 2008/2009 Rangitata River		Catch No.	6930000
W1_2		Base Sheet				Original Scale	1:8000	Level Datum	File No.
PLAN	ORIGIN	COORDS						Surv Data	
N			N.F. Daniels	2/08				13,485m01	
N			Recommended					1 of 30	


RAN 706



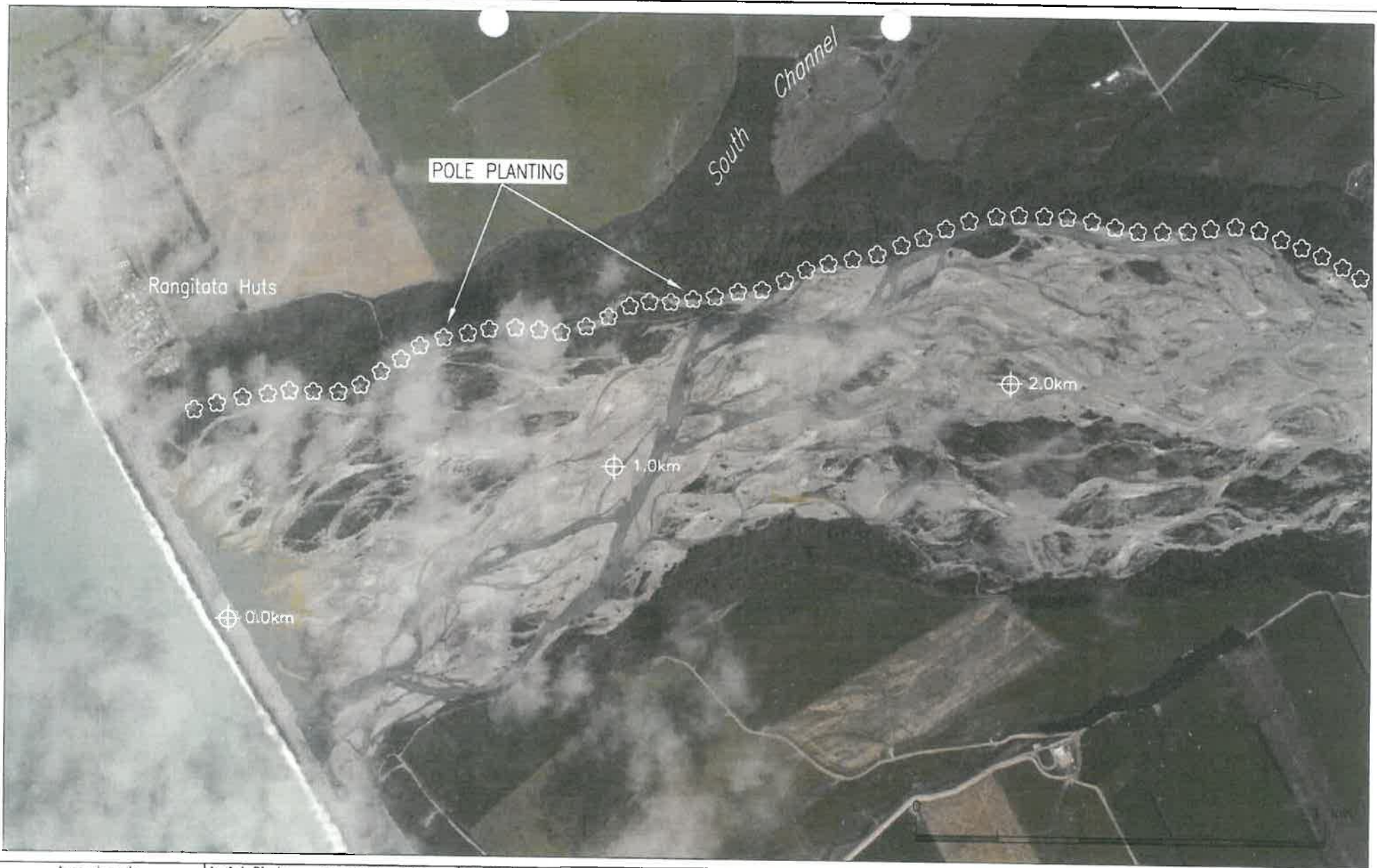
W18	Amendments	Aerial Photo	S.N.264 A/42	2/08		Environment Canterbury	Catch No. 6930000 File No. Surv Data
		Base Sheet				Rating Districts Works Programme 2008/2009 Rangitata River	
PLAN ORIGIN COORDS E E N N	Designed	Compiled	N.F. Daniels	2/08		Original Scale 1:8000	Level Datum 13 of 30
		Checked					
	Recommended						


RANTOS



W11	Amendments	Aerial Photo	S.N.264 A/28	2/08	 Environment Canterbury <small>your regional council</small>	Environment Canterbury Rating Districts Works Programme 2008/2009 Rangitata River		Catch No.	6930000
	PLAN ORIGIN COORDS		N.F. Daniels	2/08		Original Scale	1:8000	Level Datum	Surv Data
		Base Sheet						13,485m11	
		Surveyed							
		Designed							
		Complied							
		Checked							
		Recommended							


RAN 705



W1	Amendments	Aerial Photo	S.N.264 A/2	2/08	 Environment Canterbury <small>For regional roads</small>	Environment Canterbury	Catch No. 6930000 File No. Surv Data 13,485m01 1 of 30
	PLAN ORIGIN COORDS	Base Sheet	N.F. Daniels	2/08		Rating Districts Works Programme 2008/2009 Rangitata River	
E		Surveyed					
E		Designed					
		Completed					
		Checked					
		Recommended					

RAN704



WB_3	Amendments	Aerial Photo	S.N.264 A/34	2/08	 Environment Canterbury <small>Your Regional Council</small>	Environment Canterbury	Catch No. 6930000 File No. Surv Data 13,485m14 14 of 30
	PLAN ORIGIN COORDS	Base Sheet	N.F. Daniels	2/08		Rating Districts Works Programme 2008/2009 Rangitata River	
E	N	Recommended			Original Scale 1:8000		

T08 RAN