

Amendments	Aerial Photo	S.N.185 A/3	2/99	Approved	Environment Canterbury Rating District Works Programme 2001/2002 Rangitata River	Catch No. 6930000 File No. Surv Data
	Base Sheet	S.N.185 A/3	2/99			
PLAN ORIGIN E N E N	Surveyed	N.F. Daniels	6/00		Original Scale 1:8000	Level Datum
	Designed					
	Compiled					
	Checked					
	Recommended					<b>13,033m02</b> 2 of 13

# ENGINEERING JOB SETUP SHEET

RESPONSIBILITY	EDDY	JOB NUMBER	005	EKAN
JOB NAME	SOUTH	CAPITAL WORK	Y (N)	LOCATION CODE
JOB DESCRIPTION:		BRANCH - SH1		
REPAIR MAIN SOUTH BRANCH RETURN BANK. TO 1.5m BELOW EXISTING BANK. 400m CHANNEL				

1	WORK TYPE CODE	QUANTITY	UNITS	\$ QUOTED	VARIED QUANTITY	\$ VARIED
1	135	250	m	10,000		
2	085	2	m <sup>2</sup>	6,000		
3						
4						
5						
6						
\$ TOTAL				16000	\$ TOTAL	

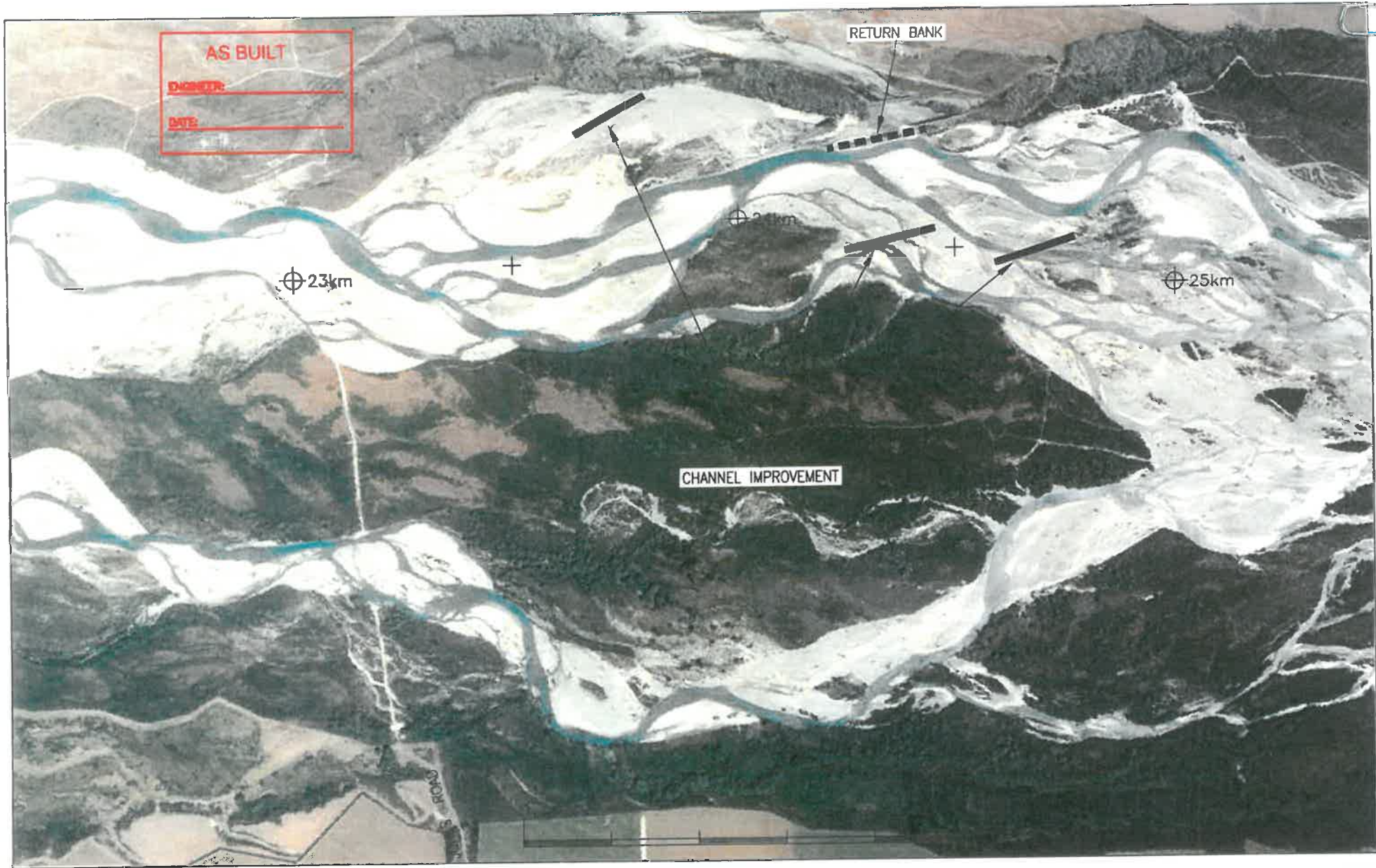
Quote prepared by: [Signature] Variation prepared by: \_\_\_\_\_  
 Quote Accepted by: [Signature] Date: 26 June 1 Variation accepted by: \_\_\_\_\_  
 Requoted by: \_\_\_\_\_ Date: \_\_\_\_\_


SPECIFICATION(S) FOR THE WORK (list ENG specification numbers): 085 135  
 ALTERATIONS TO SPECIFICATIONS:

R-BANK LEVEL. RL = 1.5m Below EXISTING  
 TW = 4m  
 FRT 6:1  
 REAR 1:1

METHODOLOGY:

VARIATIONS (Description and reason):



PLAN ORIGIN COORDS E N E N	<b>Amendments</b> Aerial Photo S.N.185 A/17 Base Sheet S.N.185 A/17 Surveyed Designed Compiled N.F. Daniels Checked Recommended	2/99 2/99  6/00	Approved 	Environment Canterbury <b>Rating District Works Programme</b> 2001/2002 Rangitata River Original Scale 1:8000      Level Datum	Catch No. 6930000 File No. Surv Data <b>13,033m09</b> 9 of 13