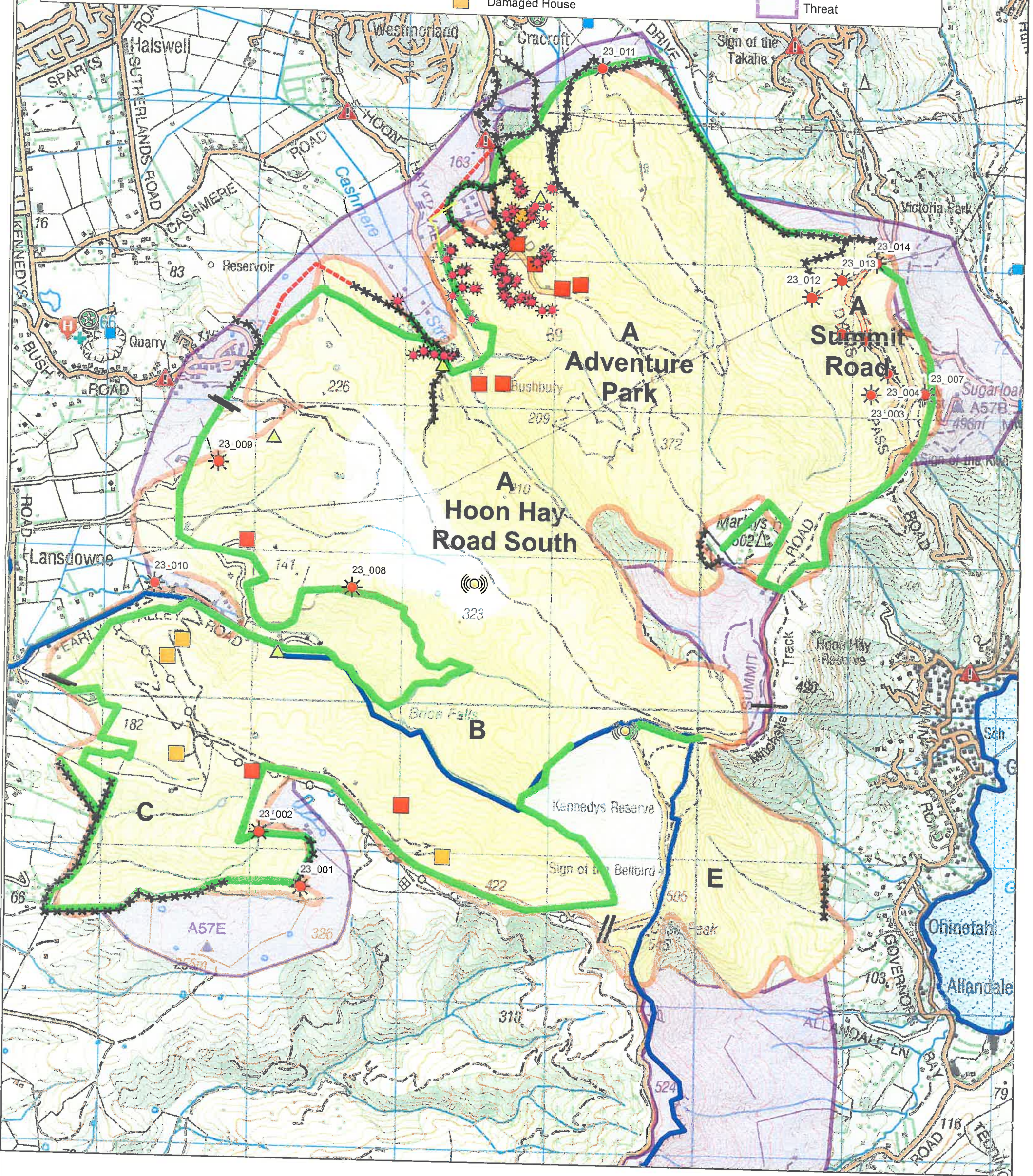


**Legend**

- |                        |                          |               |                      |                       |
|------------------------|--------------------------|---------------|----------------------|-----------------------|
| Hotspots 23rd Feb      | SA                       | Filling Point | Road Closures        | Controlled Fire Line  |
| DroneHotspots_23022017 | Medical Response Team HQ | Heli Base     | Handtool Line        | FireRetardant         |
| Hazard Points          | RadioRepeater            | Sector Break  | Completed Dozer Line | SDC/CCC Boundary Line |
| Medical Response Team  | Destroyed House          | Damaged House | Fire Boundary        | Unburnt               |
| Weather Station        |                          |               | Threat               |                       |



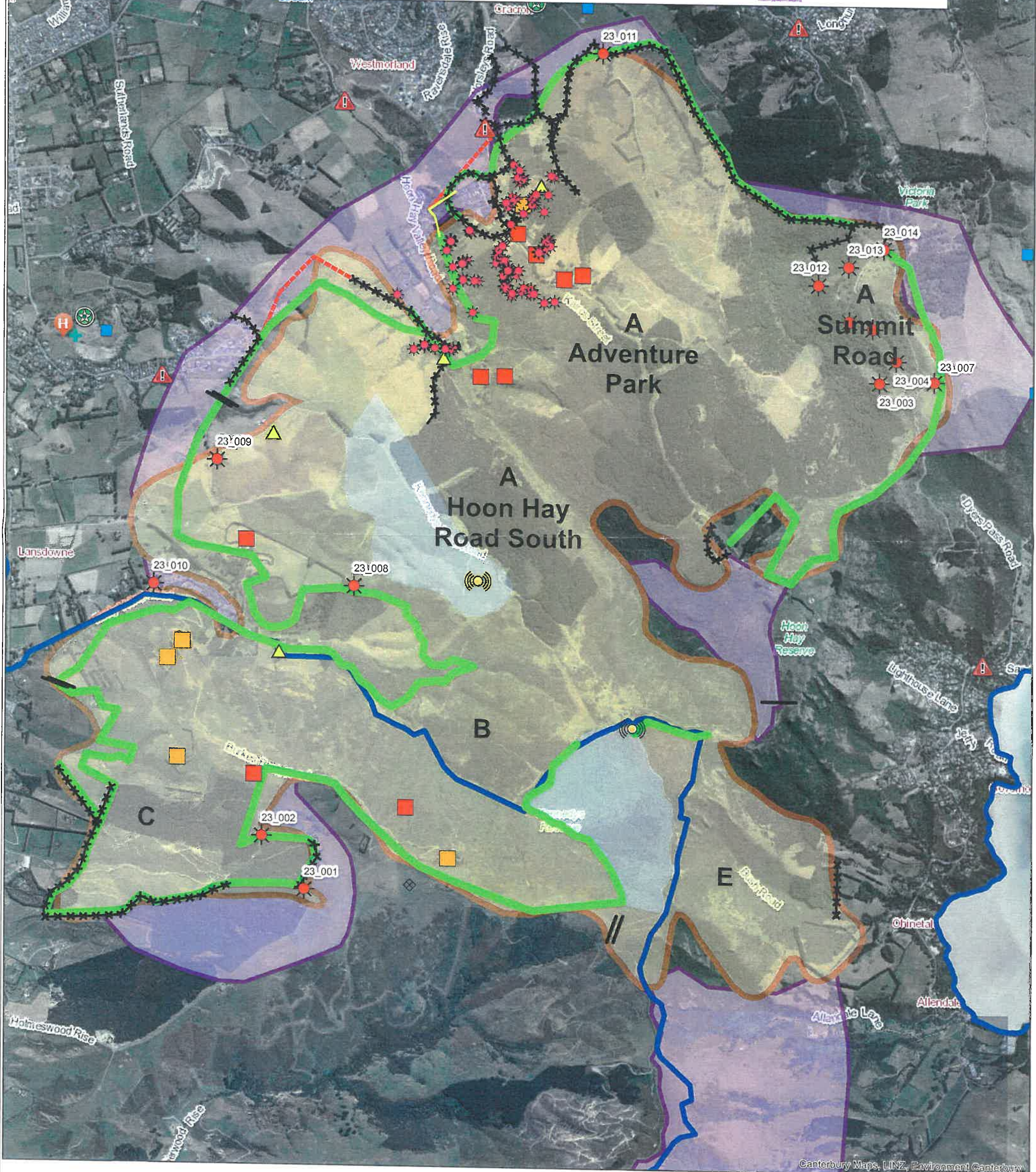
Port Hills Complex Fire Status For 24 Feb 2017  
 23FEB 2017 @ 1700

*Handwritten:* Tabled CDEM Group  
 Joint Committee : item 6  
 24 February 2017



# Legend

- |                        |                          |               |                      |                       |
|------------------------|--------------------------|---------------|----------------------|-----------------------|
| Hotspots 23rd Feb      | SA                       | Filling Point | Road Closures        | Controlled Fire Line  |
| DroneHotspots_23022017 | Medical Response Team HQ | Heli Base     | Handtool Line        | FireRetardant         |
| Hazard Points          | RadioRepeater            | Sector Break  | Completed Dozer Line | SDC/CCC Boundary Line |
| Medical Response Team  | Destroyed House          | Damaged House | Fire Boundary        | Unburnt               |
| Weather Station        |                          |               | Threat               |                       |



Canterbury Maps, LINZ, Environment Canterbury

Port Hills Complex Fire Status For 24 Feb 2017  
23FEB 2017 @ 1700

Tabled CDEM Group  
Joint Committee: Item 6  
24 February 2017