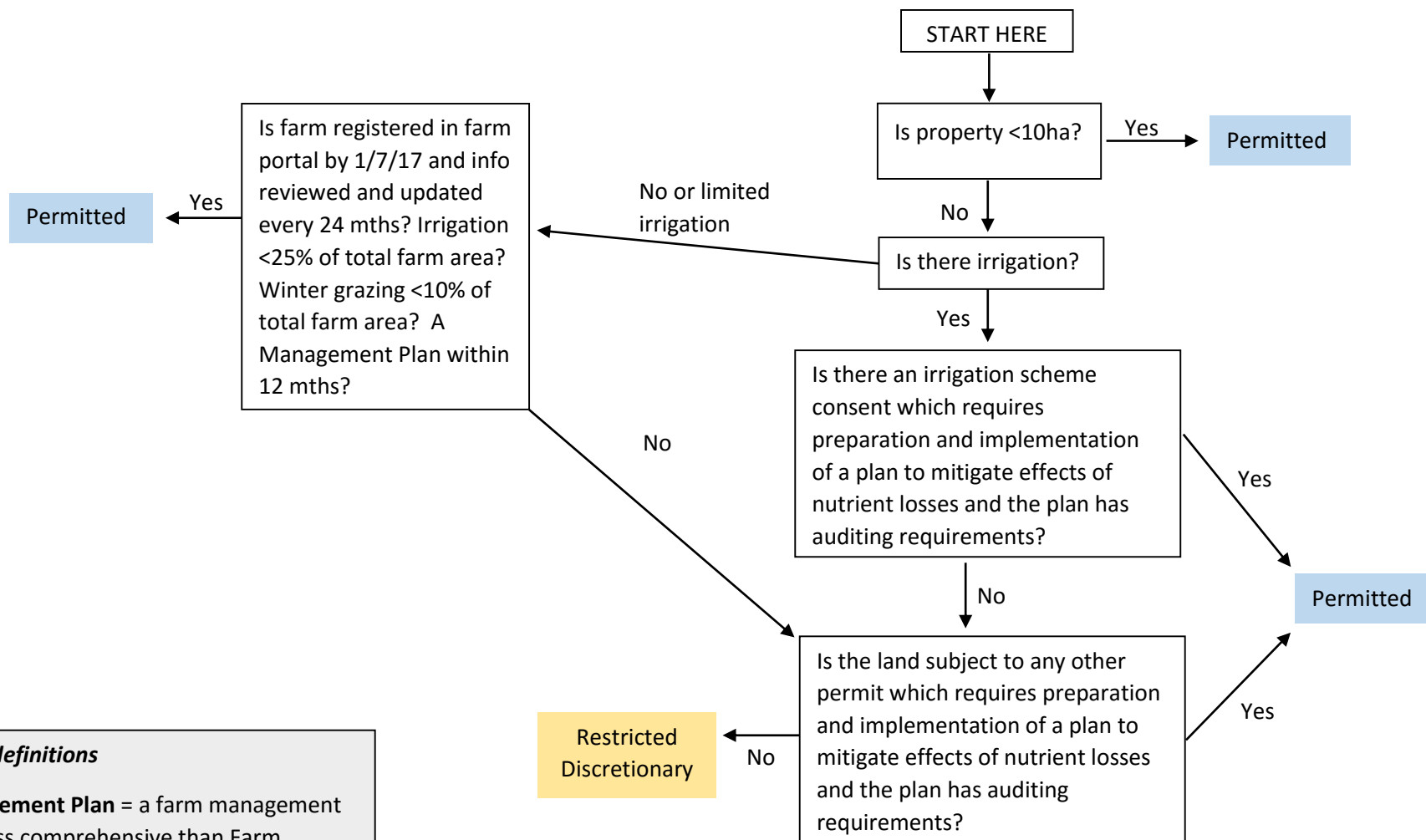


Proposed WIC LWRP rules for Valley and Tributaries, and Whitneys Creek Zone



Some definitions

Management Plan = a farm management plan less comprehensive than Farm Environment Plan (must comply with Schedule 7A of the Plan).

Farm Portal = ECan's nutrient management database accessed at www.farmportal.ecan.govt.nz. It is the tool used to derive Baseline GMP loss rates and GMP loss rates.

Activity classifications

Permitted = no resource consent required

Controlled, Restricted Discretionary, Discretionary, Non-Complying = resource consent from ECan required (in order of difficulty to obtain)

Prohibited = unable to get a resource consent, essentially an illegal activity