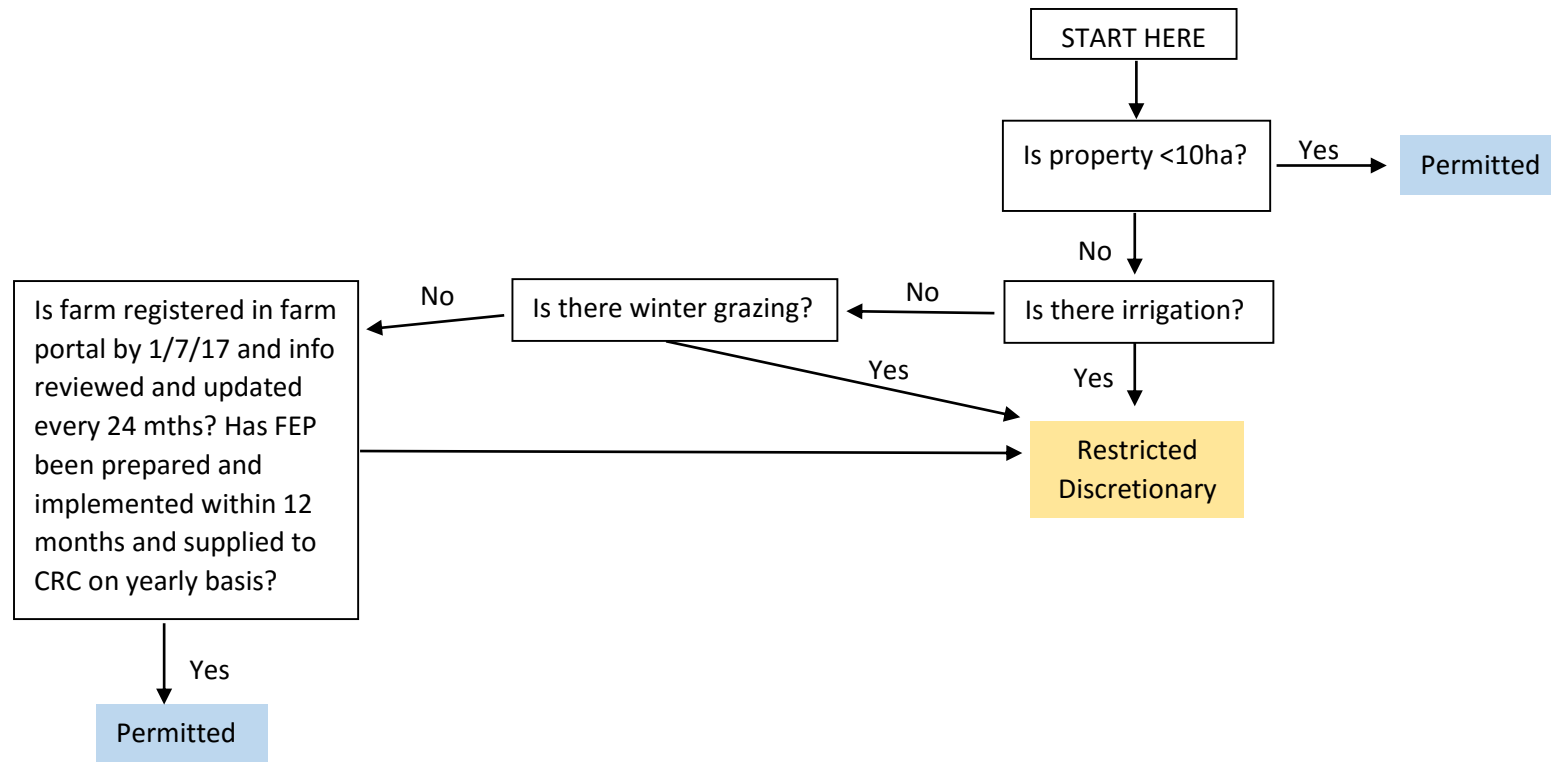


## Proposed WIC LWRP rules for Hakataramea Hill Zone



### Activity classifications

**Permitted** = no resource consent required

**Controlled, Restricted Discretionary, Discretionary, Non-Complying** = resource consent from ECan required (in order of difficulty to obtain)

**Prohibited** = unable to get a resource consent, essentially an illegal activity

### Some definitions

**FEP** = Farm Environment Plan (must comply with Schedule 7 of the Plan).

**Farm Portal** = ECan's nutrient management database accessed at [www.farmportal.ecan.govt.nz](http://www.farmportal.ecan.govt.nz). It is the tool used to derive Baseline GMP loss rates and GMP loss rates.