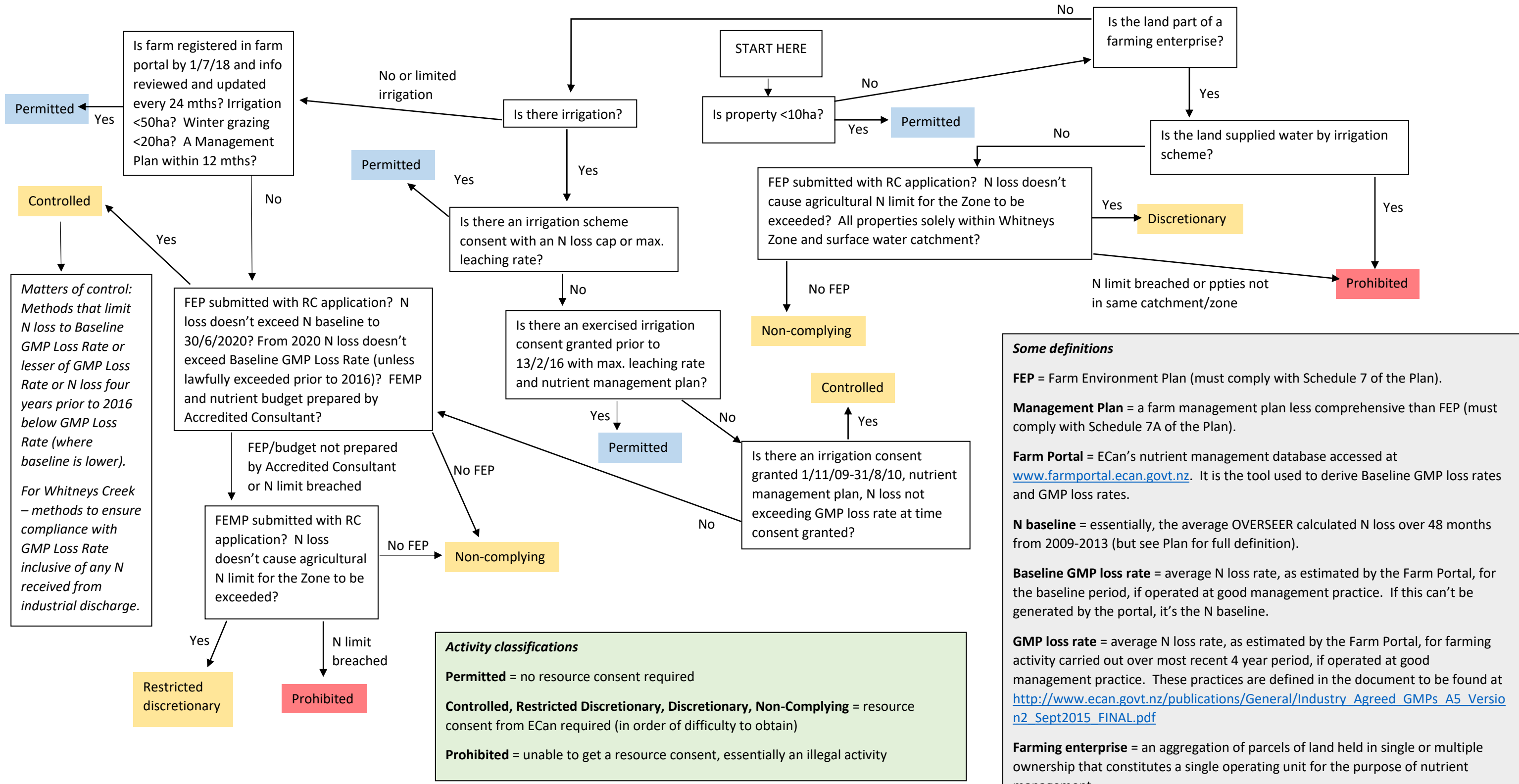


## S42A amended ECan LWRP rules for Valley and Tributaries, and Whitneys Creek Zones



**Some definitions**

**FEP** = Farm Environment Plan (must comply with Schedule 7 of the Plan).

**Management Plan** = a farm management plan less comprehensive than FEP (must comply with Schedule 7A of the Plan).

**Farm Portal** = ECan's nutrient management database accessed at [www.farmportal.ecan.govt.nz](http://www.farmportal.ecan.govt.nz). It is the tool used to derive Baseline GMP loss rates and GMP loss rates.

**N baseline** = essentially, the average OVERSEER calculated N loss over 48 months from 2009-2013 (but see Plan for full definition).

**Baseline GMP loss rate** = average N loss rate, as estimated by the Farm Portal, for the baseline period, if operated at good management practice. If this can't be generated by the portal, it's the N baseline.

**GMP loss rate** = average N loss rate, as estimated by the Farm Portal, for farming activity carried out over most recent 4 year period, if operated at good management practice. These practices are defined in the document to be found at [http://www.ecan.govt.nz/publications/General/Industry\\_Agreed\\_GMPs\\_A5\\_Version2\\_Sept2015\\_FINAL.pdf](http://www.ecan.govt.nz/publications/General/Industry_Agreed_GMPs_A5_Version2_Sept2015_FINAL.pdf)

**Farming enterprise** = an aggregation of parcels of land held in single or multiple ownership that constitutes a single operating unit for the purpose of nutrient management.

**Activity classifications**

**Permitted** = no resource consent required

**Controlled, Restricted Discretionary, Discretionary, Non-Complying** = resource consent from ECan required (in order of difficulty to obtain)

**Prohibited** = unable to get a resource consent, essentially an illegal activity

