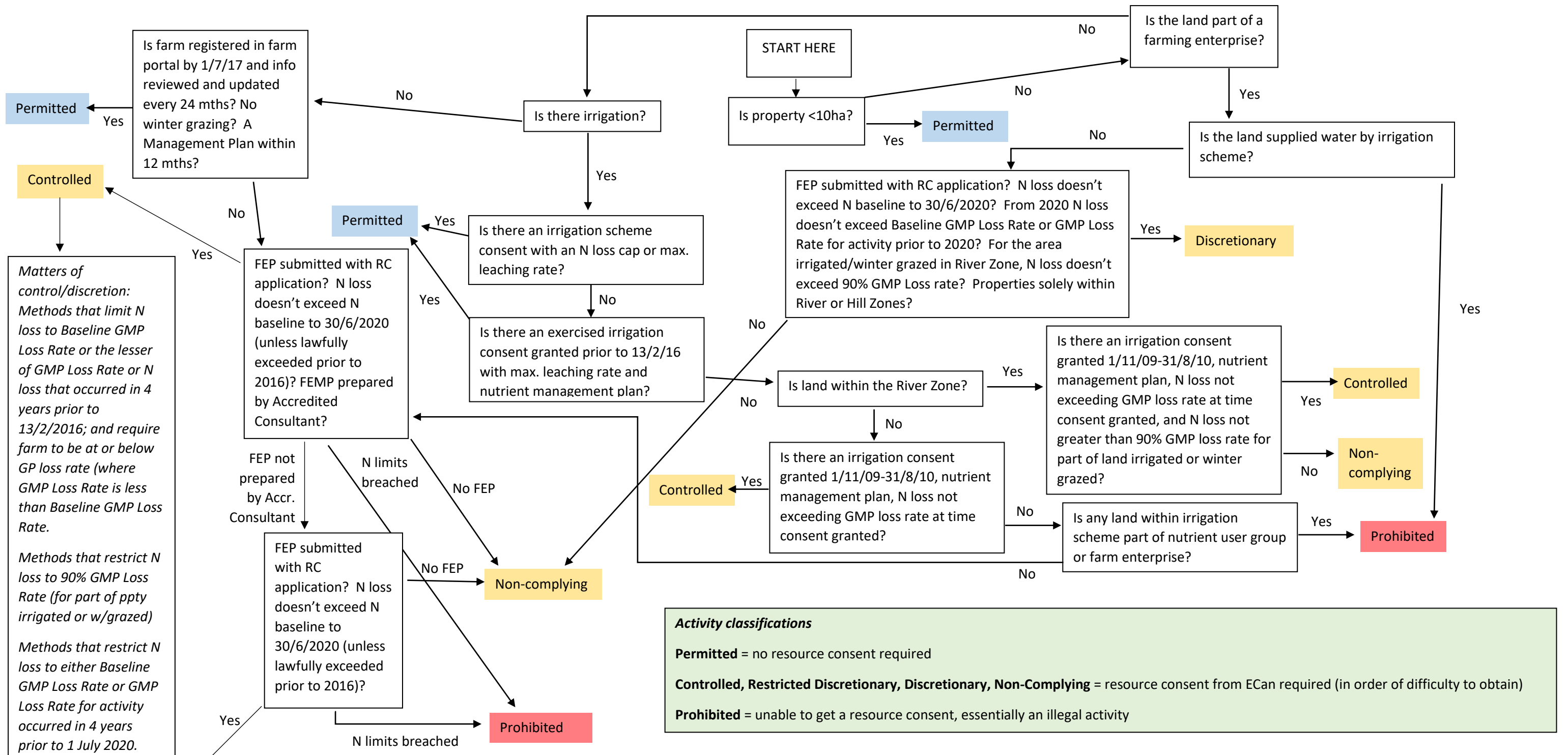


S42A amended ECan LWRP rules for Hakataramea River Zone



Matters of control/discretion:
 Methods that limit N loss to Baseline GMP Loss Rate or the lesser of GMP Loss Rate or N loss that occurred in 4 years prior to 13/2/2016; and require farm to be at or below GP loss rate (where GMP Loss Rate is less than Baseline GMP Loss Rate).
 Methods that restrict N loss to 90% GMP Loss Rate (for part of ppty irrigated or w/grazed)
 Methods that restrict N loss to either Baseline GMP Loss Rate or GMP Loss Rate for activity occurred in 4 years prior to 1 July 2020.

Activity classifications
Permitted = no resource consent required
Controlled, Restricted Discretionary, Discretionary, Non-Complying = resource consent from ECan required (in order of difficulty to obtain)
Prohibited = unable to get a resource consent, essentially an illegal activity

Some definitions
FEP = Farm Environment Plan (must comply with Schedule 7 of the Plan).
Management Plan = a farm management plan less comprehensive than FEP (must comply with Schedule 7A of the Plan).
Farm Portal = ECan's nutrient management database accessed at www.farmportal.ecan.govt.nz. It is the tool used to derive Baseline GMP loss rates and GMP loss rates.
N baseline = essentially, the average OVERSEER calculated N loss over 48 months from 2009-2013 (but see Plan for full definition).
Baseline GMP loss rate = average N loss rate, as estimated by the Farm Portal, for the baseline period, if operated at good management practice. If this can't be generated by the portal, it's the N baseline.
GMP loss rate = average N loss rate, as estimated by the Farm Portal, for farming activity carried out over most recent 4 year period, if operated at good management practice. These practices are defined in the document to be found at http://www.ecan.govt.nz/publications/General/Industry_Agreed_GMPs_A5_Version2_Sept2015_FINAL.pdf
Farming enterprise = an aggregation of parcels of land held in single or multiple ownership that constitutes a single operating unit for the purpose of nutrient management.

Restricted discretionary