

Proposed Variation 2 – Canterbury Land & Water Regional Plan

Information Sheet

September 2014

What is Variation 2?

Variation 2 is the second proposed variation to the proposed Canterbury Land & Water Regional Plan related to a specific area (the Hinds/Hekeao Plains Area). It seeks to put in place policies and rules to help achieve the community goals for freshwater management in the Hinds/Hekeao Plains Area that have been developed under the collaborative Canterbury Water Management Strategy.

How will Variation 2 change the Plan?

Variation 2 introduces additional policies and rules in Section 13 – the Ashburton sub-regional section of the proposed Land & Water Regional Plan. Minor changes are also made to two region-wide rules in Section 5 of the proposed Canterbury Land & Water Regional Plan that arise as a consequence of changes introduced by Variation 2. An amendment has also been made to the boundary of Section 12 of the proposed Land & Water Regional Plan so that the boundaries of section 13 follow the boundaries of the Mayfield-Hinds Groundwater Allocation Zone.

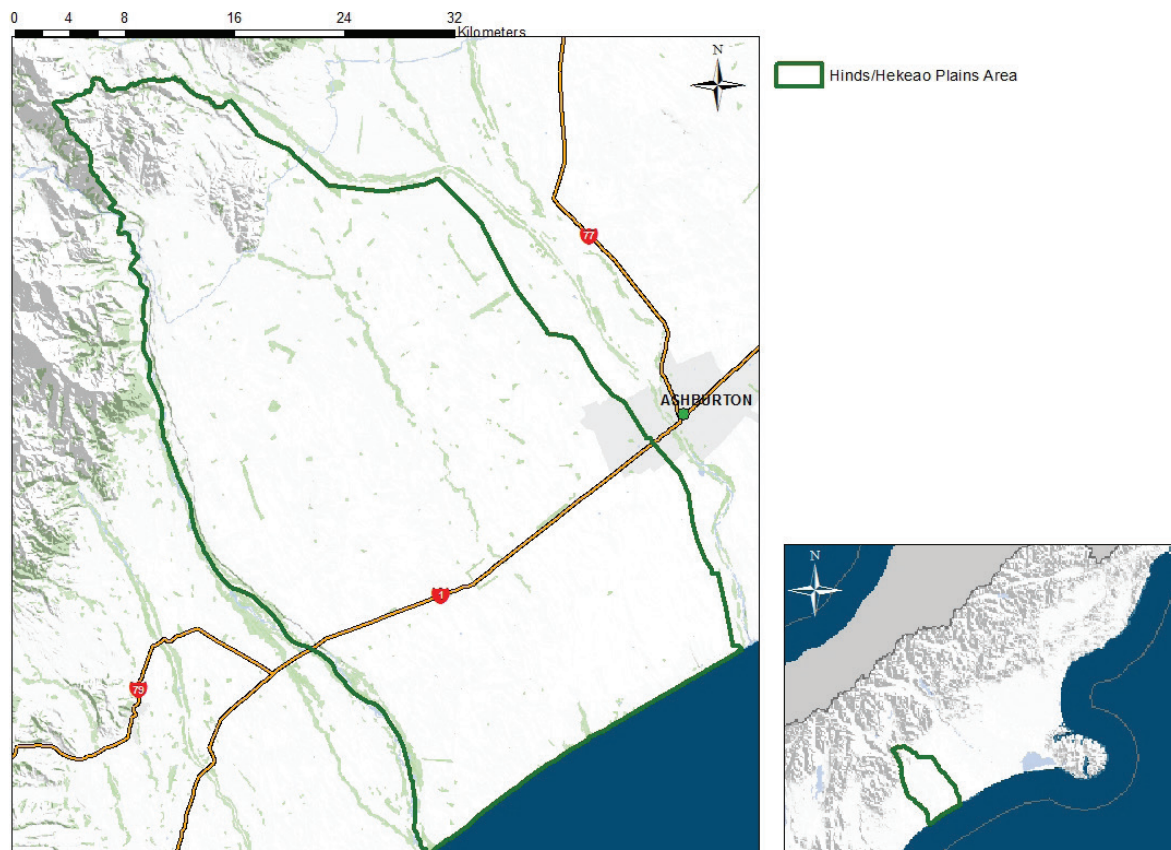
Variation 2 describes the limits, targets, timeframes and additional policies and rules to address over-allocation of water

quantity and water quality in the Hinds/Hekeao Plains Area. This means that activities occurring in the Hinds/Hekeao Plains Area will have to comply with the region-wide rules in Section 5, along with the specific sub-regional rules that apply in the Hinds/Hekeao Plains Area as a result of Variation 2.

All the rules in Variation 2 have immediate legal effect under section 86B of the Resource Management Act 1991 from the date of notification of Variation 2.

The Hinds/Hekeao Plains Area

The Hinds/Hekeao Plains Area consists of the Hinds River/Hekeao catchment, and the plains between the Rangitata and Hakatere/Ashburton Rivers. The Upper Hinds/Hekeao Area includes the foothills and basins that drain into the north and south branches of the Hinds River/Hekeao. The Lower Hinds/Hekeao Plains Area contains more than 30 spring-fed lowland waterbodies by the coast. Many of the waterbodies in the Lower Hinds/Hekeao Plains Area are the remnants of what was once an expansive wetland. The Hinds/Hekeao Plains Area is shown on the map below.



Variation 2 planning boundary, Hinds/Hekeao Plains Area

Submission information

Any person may make a written or electronic submission on Variation 2. Environment Canterbury is using an online submission system for a regional plan in addition to printed submission forms.

Submissions must be lodged by 5pm, Friday 24 October 2014

How to make a submission using the online system

Visit the online portal at <http://consult-ecan.objective.com>

You will need to register as a user with an email address and create a password. Once logged in, follow the instructions.

The benefits of lodging an online submission

- Submissions can be completed online without printing any documents.
- Submissions can be drafted and checked online before being formally submitted.
- Where an organisation or group is making a submission the online system makes it easier for different people in the organisation or group to draft, check and refine submissions.
- Submissions are linked directly to the relevant section of Variation 2 being submitted on.
- Once formally submitted, submitters receive an email to confirm their submission has been received.

How to make a submission using a printed form

Submission forms are available from Environment Canterbury (office locations below), or forms can be downloaded from www.ecan.govt.nz/lwrp-v2.

Return completed submission forms to:

Email: mailroom@ecan.govt.nz

Post: Environment Canterbury
Freepost 1201
Variation 2 to the Proposed Canterbury
Land & Water Regional Plan
Or
Environment Canterbury
PO Box 345
Christchurch 8140

Notification of Variation 2

Environment Canterbury is required to provide every person it considers directly affected by Variation 2 with a copy of the Public Notice and any other information it thinks fit to help them understand how Variation 2 may affect them.

Relevant documents:

- Variation 2 – this includes the proposed new provisions and maps in relation to the Ashburton sub-region in the proposed Canterbury Land & Water Regional Plan.
- The Ashburton Zone Implementation Programme Addendum (March 2014) – this covers the issues in the catchment and actions required to achieve the outcomes sought for the catchment.
- Section 32 Evaluation Summary Report for Variation 2 – this summarises the evaluation undertaken in developing Variation 2 as required by section 32 of the Resource Management Act 1991.
- Additional technical reports are listed in the Section 32 report.

All documents (including the technical reports) can be downloaded free of charge at <http://ecan.govt.nz/our-responsibilities/regional-plans/regional-plans-under-development/hinds/Pages/Default.aspx> or a free CD of Variation 2, contact our Customer Services Team on 0800 324 636. Hard copies are also available for a charge through the Customer Services Team.

Locations to view documents

Copies of Variation 2, the Section 32 Evaluation Report and the Ashburton Implementation Programme Addendum can be viewed at any open public library in Canterbury and at the Environment Canterbury Offices:

- 17 Sir Gil Simpson Drive, Christchurch
- 75 Church Street, Timaru
- 73 Beach Road, Kaikoura