

**ORARI-TEMUKA-OPIHI-PAREORA WATER ZONE  
MANAGEMENT COMMITTEE**

**on**

**Monday 5 December 2016**

**1pm**

**Mackenzie District Council  
Main Street  
Fairlie**

## **ORARI-OPIHI-PAREORA WATER ZONE MANAGEMENT COMMITTEE**

**Notice is hereby given that an Orari-Temuka-Opihi-Pareora Water Zone Management Committee meeting will be held on Monday 5 December 2016 at 1pm in the Council Chamber, Mackenzie District Council, Main Street, Fairlie.**

### **Committee Members:**

John Talbot (Chairman), David Anderson, Kylee Galbraith, John Henry, Mandy Home, Ivon Hurst, Richard Lyon, Hamish McFarlane, Anne Munro, James Pearse, Lan Pham, Ad Sintenie and Mark Webb

# ORARI-TEMUKA-OPIHI-PAREORA WATER ZONE MANAGEMENT COMMITTEE

5 DECEMBER 2016

<b>Page</b>	
<b>1</b>	<b>Apologies</b>
<b>2</b>	<b>Register of Interest</b>
<b>3</b>	<b>Community Forum</b>
<b>4</b>	<b>1 Confirmation of Minutes</b>
<b>5</b>	<b>Facilitator Update</b>
<b>6</b>	<b>6 OTOZ Zone Northern Boundary</b>
<b>7</b>	<b>OTOZ Healthy Catchments Project: Economic Assessments</b>
<b>8</b>	<b>9 Compliance Monitoring Results 2015/2016</b>
<b>9</b>	<b>19 Introduction to the OTOZ Practical Action Plan</b>
<b>10</b>	<b>Catchment Group Updates</b>
<b>11</b>	<b>Regional Committee Update</b>
<b>12</b>	<b>Close</b>

**ORARI-TEMUKA-OPIHI-PAREORA WATER ZONE MANAGEMENT COMMITTEE  
FOR THE MEETING OF 5 DECEMBER 2016**

**Report for Agenda Item No 4**

**Prepared by Joanne Brownie  
Secretary**

**Confirmation of Minutes – Committee Meeting 21 November 2016**

---

Minutes of the November Committee meeting.

**Recommendation**

**That the minutes of the Committee meeting held on 21 November 2016, be confirmed as a true and correct record.**

## ORARI-TEMUKA-OPIHI-PAREORA ZONE WATER MANAGEMENT COMMITTEE

### MINUTES OF AN ORARI-TEMUKA-OPIHI-PAREORA ZONE WATER MANAGEMENT COMMITTEE MEETING HELD IN MEETING ROOM 1, TIMARU DISTRICT COUNCIL, 2 KING GEORGE PLACE, TIMARU ON MONDAY 21 NOVEMBER 2016 AT 1PM

**PRESENT** John Talbot (Chairperson), David Anderson, Kylee Galbraith, Ivon Hurst, Richard Lyon (from 1.55pm), Hamish McFarlane, Anne Munro, James Pearse, Lan Pham, Ad Sintenie and Mark Webb

**APOLOGIES** Mandy Home, John Henry

**IN ATTENDANCE** Olivia Smith (Facilitator), Dan Clark (Senior Hydrology Scientist and Technical Lead)(until 3,35pm), Raymond Ford (Principal Planner), Michael Hide (Zone Implementation Team Manager), Nic Newman (Facilitator), Peter Ramsden (Tangata Whenua facilitator), Tom Lambie (ECan Councillor), Brett Painter (Project leader: Assessment and Evaluations (Infrastructure), Rob Carson-Iles (Biodiversity Officer), Alexia Foster-Bohm (ECan), Rhys Taylor (Community Engagement Coordinator), Kylie Galbraith (TDC Senior Planner), Julia Forsyth (ECan Principal Planner), Helen Risk (ECan Land Management Advisor), Peter Scott (ECan Councillor), Jeremy Boys (Central South Canterbury Water Group), Julia Crossman, Keitha Laming, Tony McCormick and Nicky Hyslop (Opuha Water Ltd), Milne Horne, Ryan O’Sullivan and Nick Ward (Geraldine Water Solutions), John Benn (Department of Conservation), Ashley Harper (Timaru District Council Group Manager District Services), Murray Doak (MPI), Prue Thirkettle (National Council of Women), Frank Scarf.

#### 1 **WELCOME**

The Chairperson welcomed everyone to the meeting especially the new OTOP members Anne Munro from Mackenzie and David Anderson from Waimate.

#### 2 **REGISTER OF INTERESTS**

There were no additional interests advised.

#### 3 **CORRESPONDENCE**

The Committee noted the outgoing letter from the Chairperson to Mr Woodnorth and the letter received from Timaru District Council on the District Plan review process.

#### 4 **CONFIRMATION OF MINUTES**

Proposed Hamish McFarlane  
Seconded James Pearse

“That the minutes of the Orari-Temuka-Opihi-Pareora Water Zone Management Committee meeting held on 3 October 2016 be confirmed as a true and correct record.”

MOTION CARRIED

## **5 FACILITATOR UPDATE**

Olivia Smith advised that the next meeting day will include a field trip to Opuha Dam at the invitation of Opuha Water Ltd, followed by the normal committee meeting at the Mackenzie District Council chamber in Fairlie.

## **6 INTRODUCTION TO GERALDINE WATER SOLUTIONS**

The Committee was introduced to Geraldine Water Solutions by its Chairman Nick Ward. The group has been formed by consent holders to investigate the opportunity to bring water from the Northern counterparts into South Canterbury, centred around the Geraldine area e.g. North Coopers Creek, South Geraldine flat, Temuka-Winchester, and East Orari/Clandeboye/Milford.

The project has been prompted by the Land and Water Regional Plan changes to allocation regimes and the infrastructure investigation work undertaken by Brett Painter (ECan). The group completed a demand survey last year and has had 2 meeting of consent holders. Work will be undertaken towards raising capital.

Nick Ward explained that at this stage there is a focus on educating farmers and encouraging them to be aware and involved, as most farmers do not understand the subregional process nor the fact that we are a water short zone.

## **7 INTRODUCTION TO OPUHA WATER LTD**

The Committee received a report and presentation by the Chief Executive of Opuha Water Ltd on the Opuha dam, how it operates and how Opuha Water Ltd can work with OTOP through the Sub-Regional Plan process.

The presentation covered an introduction to Opuha Water Ltd, a brief summary of the Opuha scheme and the dam, the flow regime and how OWL works in with the Opuha Environmental Flow Release Group (OEFrag). OWL's focus is on flow regimes, environmental management and new water. OWL continues to investigate the best operational regime to meet the needs of the various stakeholders in the river while improving the health of the river.

Achieving an adaptive management regime for the river is a particular focus for OWL's work as part of the Subregional Plan process. The effectiveness of working with OEFrag was emphasised.

## **8 INTRODUCTION TO CENTRAL SOUTH CANTERBURY WATER GROUP**

Jeremy Boys introduced the Central South Canterbury Water Group, presenting the outcomes of the new water feasibility investigations, explaining the work in support of ECan's modelling and reinforcing the option for new water from Tekapo as a source of irrigation for central South Canterbury to meet OTOP's objective of obtaining new water for the zone. The group has looked at environmental issues and practical issues including scheme design with an estimated total capital cost of approx. \$226m or \$13,200/ha.

Tekapo has the potential to substitute some of the existing water and augment the OTOP wider catchment, as the catchment has 17,000ha that is starved with no alternative. The group believes it is important for OTOP to elevate the Tekapo water scenario. Using the group's knowledge and that of the Aoraki Water Trust, it is putting forward a wider catchment solution into the whole mix for the zone.

The group is aware of working with the OTOP timeline and the cultural issues that may arise with the idea of bringing water from Tekapo. At this early stage it

has only raised the proposal with Tangata Whenua at an informal level. However it wishes to put the option on the table at this stage.

## **9 LINKING THREE PRESENTATIONS**

The Facilitator suggested the Committee think about linking the information provided in the three presentations with the Healthy Catchments Project and the infrastructure modelling work.

Aoraki Water Trust – New irrigation will be modelled as part of the Healthy Catchments Project under the new alpine water scenarios, one smaller (realistic), one larger (aspirational). However it should be noted that these scenarios will not specify the exact water source.

Geraldine Water Solutions – informed by the infrastructure modelling investigations, offers option for how the new water scenarios are modelled in the Healthy Catchments Projects.

Opuha Water Ltd – Healthy Catchment Project ‘in zone’ gains scenario will model a more flexible flow regime ie adaptive management, including an increased frequency of ‘freshes’.

## **10 OTOP WATER INFRASTRUCTURE MODELLING**

The Committee considered an update from the Project Leader on the OTOPI Zone Water Resource Modelling project to investigate ‘new’ water into the zone, using the Opuha Water Scheme and the Rangitata South Irrigation Scheme, as well as the Rangitata Diversion Race and Lake Coleridge. The results of the current model experiments, focussing on the Opuha/Opihi system were explained. He pointed out that with the new minimum flow rules and stream depletion assessments the zone will be even more water short.

## **11 TIMARU DISTRICT PLAN REVIEW PROCESS**

Timaru District Council Senior Planner Kylie Galbraith outlined the District Plan review progress to date, advising that discussion documents have been developed and are gradually being publicly released. OTOPI may be interested in a number of the topics. The Chairman advised that the committee is mindful of its status as a subcommittee of the District Council and therefore will not be making a formal submission.

## **12 IMMEDIATE STEPS BIODIVERSITY PROJECTS**

The Committee considered three Immediate Steps projects. Biodiversity Officer Rob Carson-Iles provided further information and photographs of each of the projects.

- a Proposed Mark Webb  
Seconded Richard Lyon

“That \$7,630 be approved for the Te Moana Kanuka Protection project to fence off a block of mature Kanuka.”

MOTION CARRIED

- b Proposed Richard Lyon  
Seconded Hamish McFarlane

“That \$7,853 be granted for the Glen Darach Wetland and Limestone protection project to fence off a limestone cliff system and protect the area (including vegetation and wetland) from stock.”

MOTION CARRIED

c Proposed Hamish McFarlane  
Seconded Ad Sintenie

“That \$10,950 be approved for the Frenchmans Gully project to fence off the limestone cliff system and protect it from stock.”

MOTION CARRIED

**13 CATCHMENT GROUP UPDATE**

A brief Catchment Group update was tabled. The catchment groups are keen to take part in the Healthy Catchments Project public meetings and will reduce the frequency of their ordinary catchment group meetings accordingly.

**14 CWMS REGIONAL WATER MANAGEMENT UPDATE**

An update on the CWMS Regional Water Management Committee was tabled at the meeting noting that there are new members on the Regional Committee, and including an ecosystem and biodiversity working group report, regional infrastructure working group update, and a brief summary of the presentation made to the regional committee on climate change.

The meeting concluded with a karakia from Peter Ramsden.

The meeting concluded at 4.30pm.

---

Chairperson



**ORARI-TEMUKA-OPIHI-PAREORA ZONE WATER MANAGEMENT COMMITTEE**  
**FOR THE MEETING OF 5 DECEMBER 2016**

**Report for Agenda Item No 6**

**Prepared by Raymond Ford, Jason Holland**

**Orari-Temuka-Opihi-Pareora (OTOP) Zone Northern Boundary**

---

**Purpose**

To discuss the northern boundary for the OTOH Healthy Catchments Project, and to recommend a change to the OTOH Zone planning boundary.

**Background**

The northern boundary for the Healthy Catchments Project does not align with the planning boundary for this area (Section 14 of the Land and Water Regional Plan).

The Healthy Catchments Project includes an area (Green Nutrient Allocation Zone (NAZ) adjacent to the south side of the lower Rangitata River (Figure 1). This area falls outside of Section 14.

The ZC has asked Environment Canterbury for further guidance on the implications of moving the planning boundary.

**Moving the planning boundary to align with the Healthy Catchments Project boundary**

Factors in favour of moving this boundary include:

- *The Rangitata-Orton Groundwater Allocation Zone (GWAZ):* moving the planning boundary would avoid splitting this allocation zone. The zone boundaries are based on hydrological boundaries. The adjusted planning boundary would instead fit neatly within a single groundwater management unit and provide for more efficient management of the resource.
- *Precedent:* a similar adjustment to the planning boundary was made by Plan Change 2 (Hinds/Hekeao Plains) to the Land and Water Regional Plan. In that case, the planning boundary for Section 12 was also moved closer to the Rangitata River to better reflect the hydrology of that catchment.

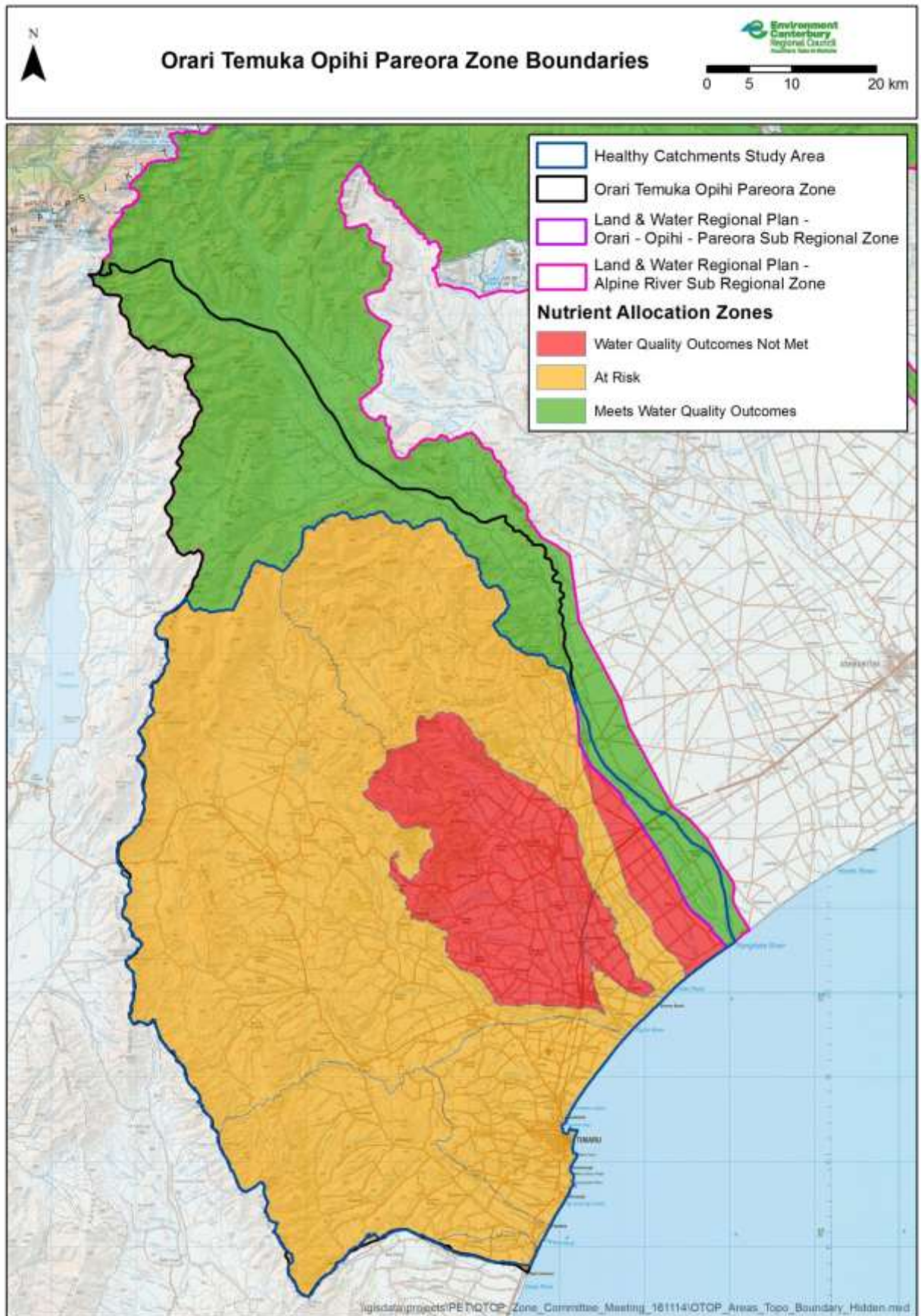
**Implications to be worked through during the Healthy Catchments process include:**

- Ensuring consistency of any planning solutions with the Water Conservation Order for the Rangitata River
- Considering whether a review of the nutrient status of the new area is required
- Considering appropriate planning solutions for the area brought into Section 14 (noting the precedent set by Plan Change 2 in a similar situation).

## **Recommendations**

- **That the northern Section 14 plan boundary is amended to align with the Healthy Catchments Project boundary**
- **That appropriate communications are undertaken to advise landowners in the area affected**
- **That further advice is provided during the Healthy Catchments Project on technical and planning implications.**

**FIGURE 1**



**ORARI-TEMUKA-OPIHI-PAREORA ZONE WATER MANAGEMENT COMMITTEE**  
**FOR THE MEETING OF 5 DECEMBER 2016**

**Report for Agenda Item No 8**

**Prepared by**     **Olivia Smith**  
                          **Zone Facilitator**

**Compliance Monitoring Results 2015/2016**

---

**Purpose**

To provide the zone committee with a summary of the compliance monitoring results for the Canterbury Region and the OTOP Zone for 2015/2016.

**Background**

In early 2016 the zone committee provided feedback on the compliance monitoring results for the OTOP zone for the 2014/2015 year. Reflecting on these results, the zone then established some compliance monitoring priorities in June 2016 to guide how monitoring staff focus their efforts in 2016/2017.

Given these priorities were established in June 2016, the attached monitoring results for the 2015/2016 season do not necessarily reflect the priority approach agreed by the zone committee.

**Recommendation**

**That the Committee provides feedback on the monitoring results for 2015/2016.**

**Attachments**

- Regional Monitoring Report 2015/2016
- OTOP Monitoring Report 2015/2016
- OTOP Compliance Priorities for 2016/2017



# Compliance Monitoring Annual Snapshot Report

1 July 2015 – 30 June 2016

## A shared vision for Canterbury

Environment Canterbury has a key role in facilitating the sustainable development in the Canterbury Region. Perhaps the most significant example of how we can do this is the Canterbury Water Management Strategy (CWMS) which provides a shared vision – developed over many years via extensive public engagement – to protect and improve our fresh water, now and for future generations. The strategy recognises that responsibility for achieving environmental outcomes is shared between government, industry, community and individual land managers.

## Our approach to compliance monitoring and enforcement

Our approach to compliance recognises this shared responsibility and is based on achieving greater levels of self-audited management by landholders and industry, while at the same time providing the community with confidence that environmental standards and requirements are being met. We expect everyone to comply with the regulatory requirements the Council is responsible for and we know that the majority of people do. Our approach to compliance is to work with industry, land holders and individuals to achieve voluntary compliance wherever possible and to take action using our regulatory enforcement tools where required.

Environment Canterbury has been implementing this approach across a number of priority areas including air quality, water use and agricultural discharges. We also implement a wide range of programmes that sit alongside our compliance monitoring functions that deliver education and awareness, support for technology installation, joint-industry programmes, incentives and financial assistance. For example, to help deliver the CWMS outcomes, we have established six zone-based teams with responsibility to integrate programmes at a local level in response to local priorities. This approach is delivering successful outcomes.

## Water metering

This year a key milestone in the water programme was achieved – 100% of water users required to install a meter now have done so or have an action plan in place to achieve this. This will significantly improve water use efficiency by landholders, and our understanding of water use across the region. Canterbury has the highest number of water consents in the country, three times more than any other region. In addition a majority of these consent holders have now installed telemetry allowing for real-time monitoring of water use. This provides landholders, industry and Environment Canterbury with the information and tools to actively and more responsibly manage water use to a degree not previously possible.

## Agricultural discharges – Significant Improvements in good practice achieved

There are around 1369 dairy farms in Canterbury that require resource consent. Over a number of years Environment Canterbury has been working in partnership with industry on a range of proactive programmes to improve dairy effluent management. As a result of these programmes and our compliance activities, the percentage of farms operating at good practice or better has significantly improved. We will continue to focus on higher risk farms for regular monitoring.

## Enforcement Tools

Our commitment to working with landholders and individuals to assist them with compliance does not negate our ability to use the enforcement tools available to us through the RMA when we need to. These tools include:

- Formal written warning – notice of an offence and requirement to take action (often minor)
- Abatement notice – formal notice to take action or to cease an activity that may have an adverse environmental effect or breaches the RMA
- Infringement notice – formal notice of an offence which includes payment of a fine
- Prosecution – for offences so serious that they warrant proceedings through the courts.

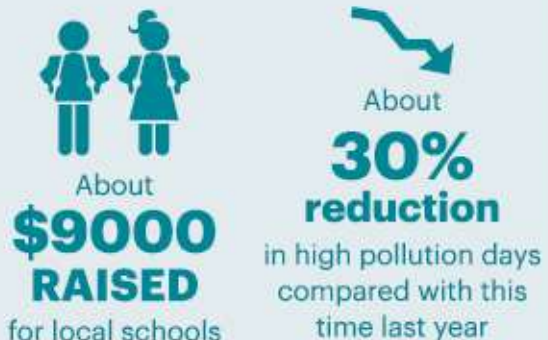
Abatement notices and infringement notices are publicly available on our website.

## Future review

Environment Canterbury is committed to ensuring that we continue to deliver on our regulatory responsibilities in the most appropriate and effective way. This means that we need to continually review our tools (statutory and non-statutory) and their application to ensure alignment with desired outcomes and the necessary timeframes. We are currently reviewing our overall compliance approach and framework to ensure our approach continues to deliver the best service to the community.

## Air Quality – Significant reductions in the number of high pollution days achieved

The Warmer Cheaper air quality campaign run over winter was an innovative example of where a combination of non-statutory and statutory programmes can work together. This programme, which was focused on monitoring smoky chimneys and reducing urban air pollution for better health outcomes, achieved a significant reduction in high pollution days in key airsheds across Canterbury. A key part of this was teaching homeowners how to burn smarter – through education and the 'kindling fundraiser' which raised money for the community while educating households about clean burning.



# 2015-2016

# Monitoring Results

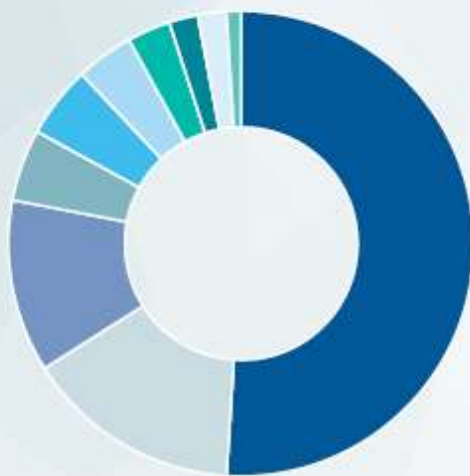
## Our goal – to facilitate the sustainable development in the Canterbury Region

We use a range of regulatory and non-regulatory tools to achieve this outcome across land, air, water and coasts. It is everyone's responsibility to comply with the relevant regulatory rules and requirements. To enable this we:

- ◆ **MONITOR** compliance with relevant rules and resource consents in accordance with our statutory responsibilities under the Resource Management Act 1991 (RMA)
- ◆ **ASSESS** compliance with these requirements and
- ◆ **WORK** with land manager to achieve compliance and
- ◆ **TAKE** enforcement action where required.

## What we monitored...

# 5,783 consents



Main types of events monitored

- Groundwater abstraction 51%
- Agricultural discharge 15%
- Surface Water abstraction 12%
- Industrial discharge (air, land and water) 5%
- Install a bore or gallery 5%
- Wastewater discharge 4%
- Works in waterways and coastal marine area 3%
- Stormwater discharge 2%
- Structures (waterways, coastal, other) 2%
- Gravel extraction 1%



## What we found...

ACTIVITY	TOTAL CONSENTS MONITORED	PERCENTAGE	ASSESSMENT GRADE				ENFORCEMENT ACTION AGAINST A CONSENT
			A	B	C	D	
Water	3617	63%	2960	96	421	140	118
Dairy Discharges	861	15%	638	25	172	26	4
Industrial discharges	664	11%	481	49	125	9	2
Landuse activities	604	10%	529	32	34	9	12
Coastal	37	1%	26	5	3	3	3
<b>TOTAL</b>	<b>5783</b>	<b>100%</b>	<b>4634</b> (80%)	<b>207</b> (4%)	<b>755</b> (13%)	<b>187</b> (3%)	<b>139 (2%)</b>

## What we did...

### Action Taken

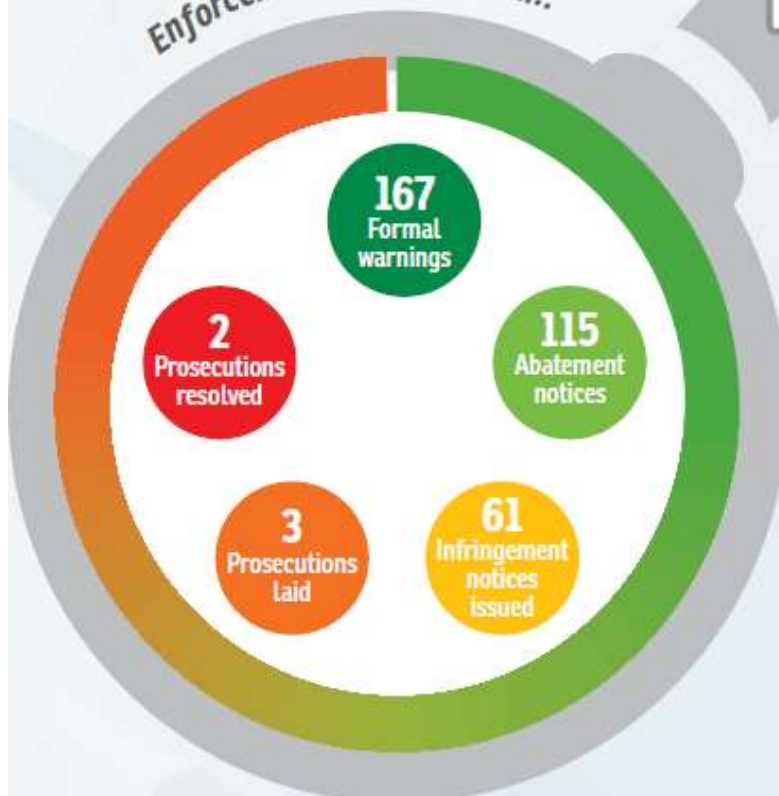
#### A/B: Good Practice

Working with consent holder towards continuous improvement and best practice.

#### C/ D: Compliance issues

Providing advice and assistance and requiring action to be taken as part of an action plan. Actions may be quite wide ranging depending on the issue.

### Enforcement action taken...

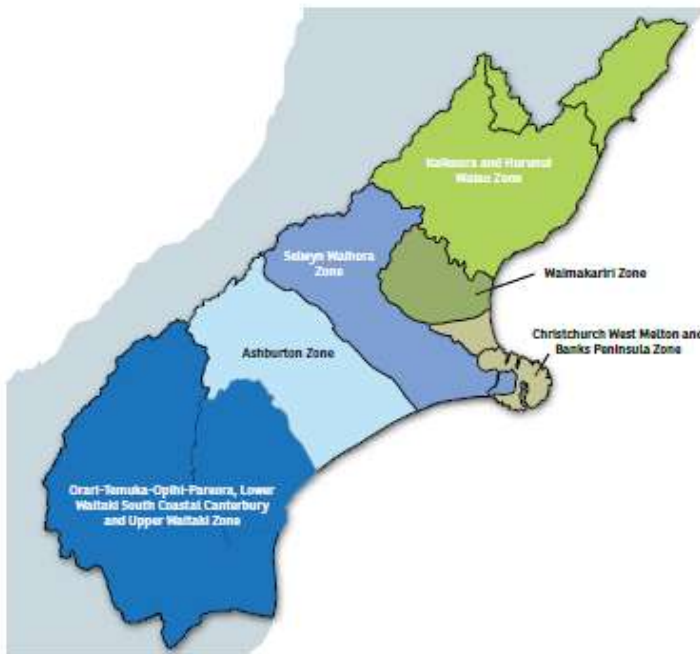


# What did our community report?

During 2015/2016 over 5000 pollution reports were received. Air related complaints primarily relating to odour and domestic chimneys continue to dominate (67%). All pollution reports received by Environment Canterbury are recorded, assessed based on the potential for environmental risk and investigated where required. Actions taken in response to these reports may range from education through to enforcement action. During the 15/16 period these investigations led to 35 infringements and 7 Abatement notices being issued.

# 5,080

## Pollution Reports



### Total Pollution Reports by Zone

- Selwyn Waihora Zone 10%
- Christchurch West Melton and Banks Peninsula 56%
- Southern Zone 16%
- Kalkoura and Hurunui Waiata 3%
- Waimakariri Zone 11%
- Ashburton Zone 5%



### CASE STUDY: Illegal burning and burying of demolition waste

An Environment Canterbury investigation uncovered the dumping of at least 15 truck and trailer loads of earthquake demolition waste to a farm in Hororata. The waste was tipped into a farm pit and then burned or buried.

Charges were laid by Environment Canterbury and the defendant, Barry Foster, pleaded guilty to three charges of breaching the Resource Management Act, including illegally burning and burying demolition waste. He was subsequently sentenced to two months of community detention, consisting of a seven-day-a-week curfew, and 200 hours of community service.

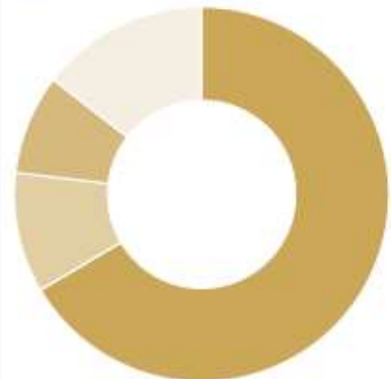
The charges sent a clear message to individuals and businesses that dumping waste unlawfully is unacceptable and will not be tolerated by the community. Strong sentences will be sought by Environment Canterbury and individuals can expect their personal freedom to be at stake.



Evidence of the illegal dumping of earthquake demolition waste

### Total Pollution Reports by Category

- Air 67%
- Water 10%
- Land 9%
- Other 14%



Of air related pollution reports the majority relate to odour and domestic chimneys



# OTOP 2015-2016 Monitoring Results

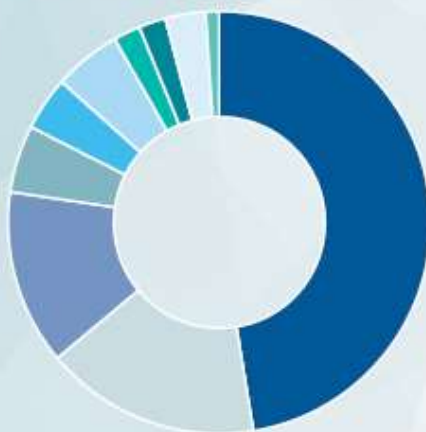
Our goal – to facilitate the sustainable development in the Canterbury Region

We use a range of regulatory and non-regulatory tools to achieve this outcome across land, air, water and coasts. It is everyone's responsibility to comply with the relevant regulatory rules and requirements. To enable this we:

- ◆ **MONITOR** compliance with relevant rules and resource consents in accordance with our statutory responsibilities under the Resource Management Act 1991 (RMA)
- ◆ **ASSESS** compliance with these requirements and
- ◆ **WORK** with property owner or consent holder to achieve compliance and
- ◆ **TAKE** enforcement action where required.

## ◆ What we monitored...

**851** consents



### Main types of events monitored

- Groundwater abstraction 46%
- Agricultural discharge 16%
- Surface Water abstraction 13%
- Industrial discharge (air, land and water) 5%
- Install a bore or gallery 4%
- Wastewater discharge 5%
- Works in waterways and coastal marine area 2%
- Stormwater discharge 2%
- Structures (waterways, coastal, other) 3%
- Gravel extraction 1%

## What we found...

ACTIVITY	TOTAL CONSENTS MONITORED	PERCENTAGE	ASSESSMENT GRADE			
			A	B	C	D
Water	506	59%	409	9	67	21
Dairy Discharges	137	16%	102	2	30	3
Industrial discharges	107	13%	86	3	17	1
Landuse activities	95	11%	61	3	1	1
Coastal	6	0%	5	0	1	0
<b>TOTAL</b>	<b>851</b>	<b>100%</b>	<b>663</b>	<b>17</b>	<b>116</b>	<b>26</b>

### Action Taken

#### A/B: Good Practice

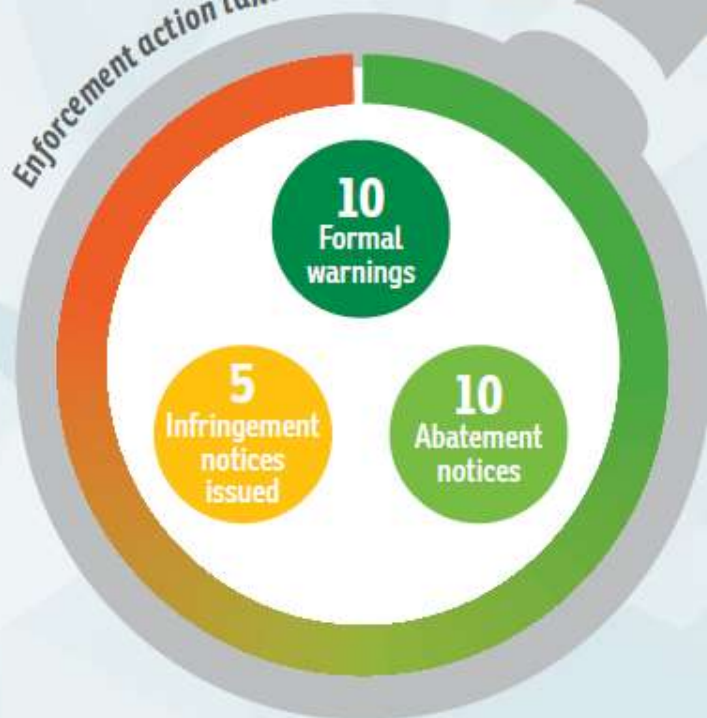
Working with consent holder towards continuous improvement and best practice.

#### C/D: Compliance issues

Providing advice and assistance and requiring action to be taken as part of an action plan. Actions may be wide ranging depending on the issue.

## What we did...

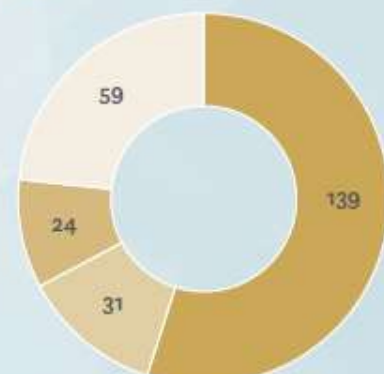
Enforcement action taken...



## What our community reported...

### Total Pollution Reports by Category

Air 55%      Land 9%  
Water 12%      Other 23%



Of air related pollution reports the majority relate to odour and domestic chimneys

E16/2492 - 010P

 **Environment Canterbury**  
Regional Council  
Kaitiaki Take Kōwhiri

Facilitating sustainable development  
in the Canterbury region  
[www.ecan.govt.nz](http://www.ecan.govt.nz)

Christchurch  
PO Box 345  
P. 03 365 3828

Timaru  
75 Church Street  
PO Box 550  
P. 03 687 7800

Blakburn  
73 Beach Road  
PO Box 59  
P. 03 319 5781

# Consent Monitoring and Enforcement Guideline

## Orari, Temuka, Opihi, Pareora Zone – 2016/2017

### PURPOSE AND SCOPE

The purpose of this document is for the Orari, Temuka, Opihi, Pareora (OTOP) Zone Committee to provide guidance to Environment Canterbury on how it undertakes consent monitoring and enforcement work in the zone. This guidance is provided in the form of:

Outcomes the committee would like to see achieved as a result of this work stream.

Activities in the zone that the committee identify as being highest priority for monitoring.

Committee expectations of how the enforcement tools will be used in the Zone.

This guidance will be used in combination with existing legal and risk management processes to establish the annual consent monitoring and enforcement programme within the zone.

It should be noted that this document is not legally binding on Environment Canterbury, the Zone Committee or any other organisation or individual. It does not exhaustively address all statutory limitations and considerations that may be relevant under the Resource Management Act 1991 (RMA), and nor does it confine, restrain or limit the discretion of Environment Canterbury to take any action.

### DESIRED OUTCOME

The Councils RMA monitoring functions support the achievement of the Zone Committees priority outcomes, with particular focus on:

- The adoption of good management practices
- Widespread community ownership of the catchments health
- Understanding and compliance with the relevant planning requirements in the zone
- Optimisation of the water resource in the Zone.

The key approaches to achieving these outcomes will be through:

- The provision of education and guidance to encourage the adoption of good management practices.
- Focusing consent monitoring and enforcement action on resource users with the greatest need to change behavior.
- Providing clarity to resource users where requirements are complex and/or unclear.
- Where possible, ensuring regulations are not a barrier to achieving positive outcomes.

Brought to you by Environment Canterbury working with





- Appropriate use of the enforcement tools available where the impacts of an activity on the environment are significant and /or there is a strong need to provide a deterrent, and especially where compliance is not achieved through alternative approaches.
- Reporting on progress and actions taken to build trust with the community.

#### CONSENT MONITORING PRIORITIES

The Zone Committee has identified the following three priority activities for the 2016/2017 season:

- Monitoring minimum flow sites during times of restriction.
- High-risk agricultural discharges
- Full compliance with the water metering regulations.
- Consented activities in the vicinity of sensitive areas. (Drinking water supply zones, Mahinga Kai areas and recreational bathing sites)

Priority will be given to monitoring these consents in accordance with:

- The existing risk ratings for individual consents
- Local officer knowledge of issues and areas that are likely to be under pressure
- The prevailing climatic conditions.

Consents relating to the taking and use of water will be monitored using the following methods:

- **Water data management:** Enforcing conditions relating to flow, volume and minimum flow compliance through analysis of water use data across all consents.
- **Site visits:** Conducting site visits for medium and high risk consents, particularly surface water takes in high risk catchments, to ensure that good management practices are being implemented.
- **Desktop:** Ensuring all environmental monitoring is undertaken in accordance with consent requirements and submitted to Environment Canterbury as required.
- **Support for community monitoring:** Where appropriate, Environment Canterbury will support the formation and operation of Water User Groups and monitoring collectives.

Consents for discharges to land will be monitored using the following methods:

- **Site visits:** Frequency of visits will be dependent on the risk rating for the property, but may be up to four times per year for high risk consents.
- **Desktop:** Ensuring all environmental monitoring is undertaken in accordance with consent requirements and submitted to Environment Canterbury as required.

#### ENFORCEMENT TOOLS

Environment Canterbury has a range of enforcement tools available, both punitive and directive. The directive tools include verbal warnings, written warnings, abatement notices, and enforcement orders, while the punitive options include infringement notices and prosecution.

Brought to you by Environment Canterbury working with





The committee supports an approach which aims to change undesirable behavior with the selection of the appropriate tool should consider the following matters:

- The nature and scale of the environmental impact
- The past and present conduct of the resource user
- The significance of the issue to the community
- The need to provide a deterrent to others

The committee supports the use of Alternate Environmental Justice where the case meets the relevant criteria and the process will result in an improved environmental outcome.

#### REVIEW

This guideline will be reviewed in January and June 2017.

**ORARI-TEMUKA-OPIHI-PAREORA ZONE WATER MANAGEMENT COMMITTEE**  
**FOR THE MEETING OF 5 DECEMBER 2016**

**Report for Agenda Item No 9**

**Prepared by Michael Hide**  
**Zone Manager**

**Proposed Practical Action Plan**

---

**Purpose of Report**

To propose a Practical Action Plan for the committee to consider endorsing.

**Background**

In late 2015 the zone committee established some '5 year outcomes and milestones' for water management in the OTOP zone. A 5 year work programme was then to be developed to help coordinate action to deliver these outcomes and milestones.

The development of this work programme has been restricted due to limited resource in the Zone Delivery Team. The recent appointment of a full time Land Management Advisor for the OTOP zone means there is now resource to help coordinate the development and implementation of a focused work programme.

At a zone committee workshop in October 2016, Michael Hide suggested his team develop a short term practical action plan (now - Sept 2017) in place of a 5 year work programme. This short term plan is intended to better align with the timeframes of the Healthy Catchments Project and the Landcare Trust 'Working for Opihi Water' Project. The short term plan would then be revised upon the completion of the ZIP addendum in September 2017.

Several committee members supported the concept and recommended that the action plan be focused on:

- actions/easy fixes that can be achieved by Sept 2017 to help build a sense of momentum and achievement within the community
- addressing hotspots/focus on specific geographic areas
- supporting the application of knowledge acquired from catchment group/industry field days on farm.

A draft practical action plan will be presented at the zone committee meeting.

**Recommendation**

**The Committee considers endorsing the Practical Action Plan.**