

Tabled @ Hearing 02.07.2015



Figure 2. Hinds Hekeao Plains drains sites for monthly nitrate sampling from 8 August 2014 to 21 April 2015.

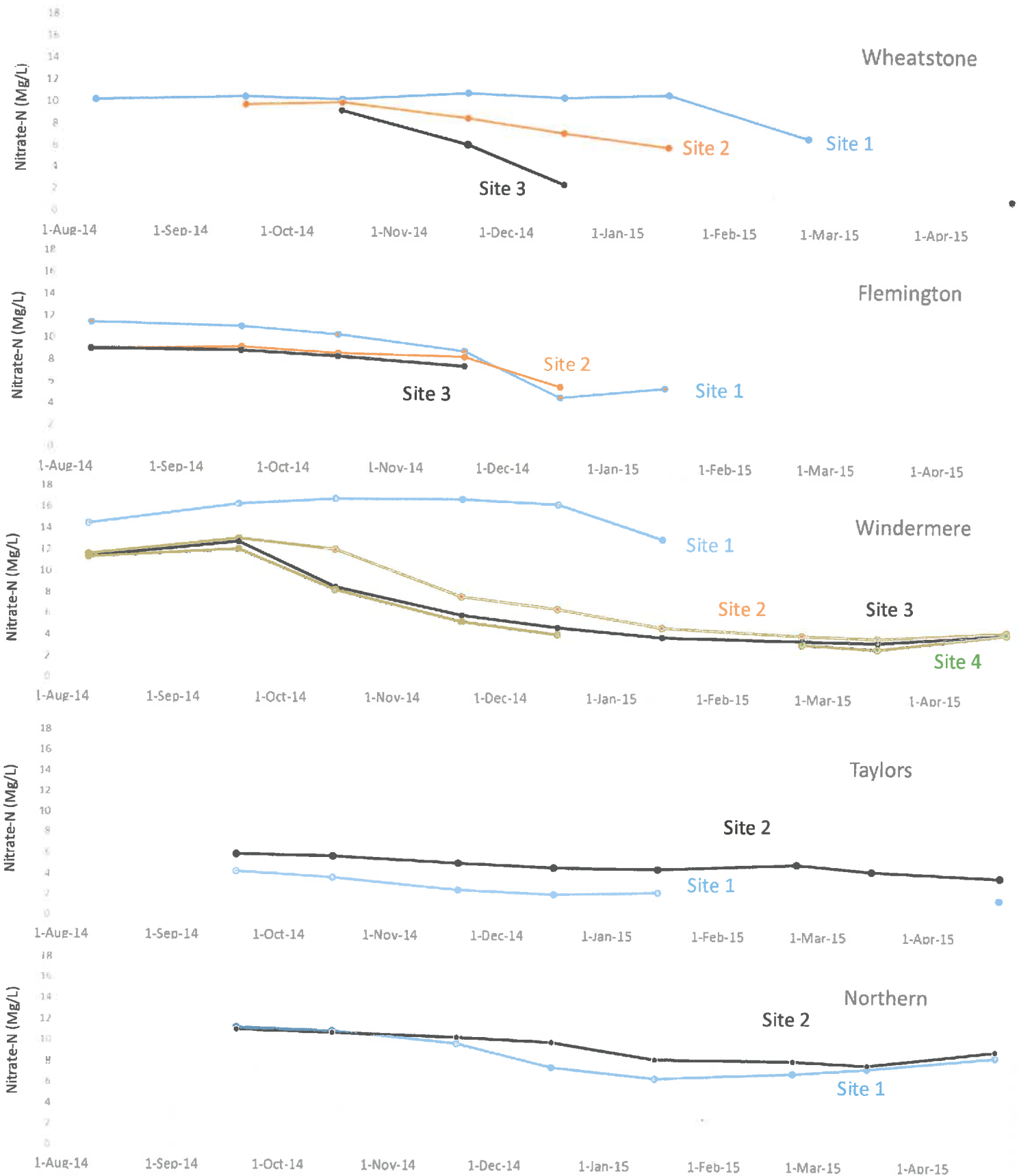


Figure 3. Monthly nitrate concentrations at 14 sites on five Hinds Hekeao Plains drains from August 2014 to April 2015



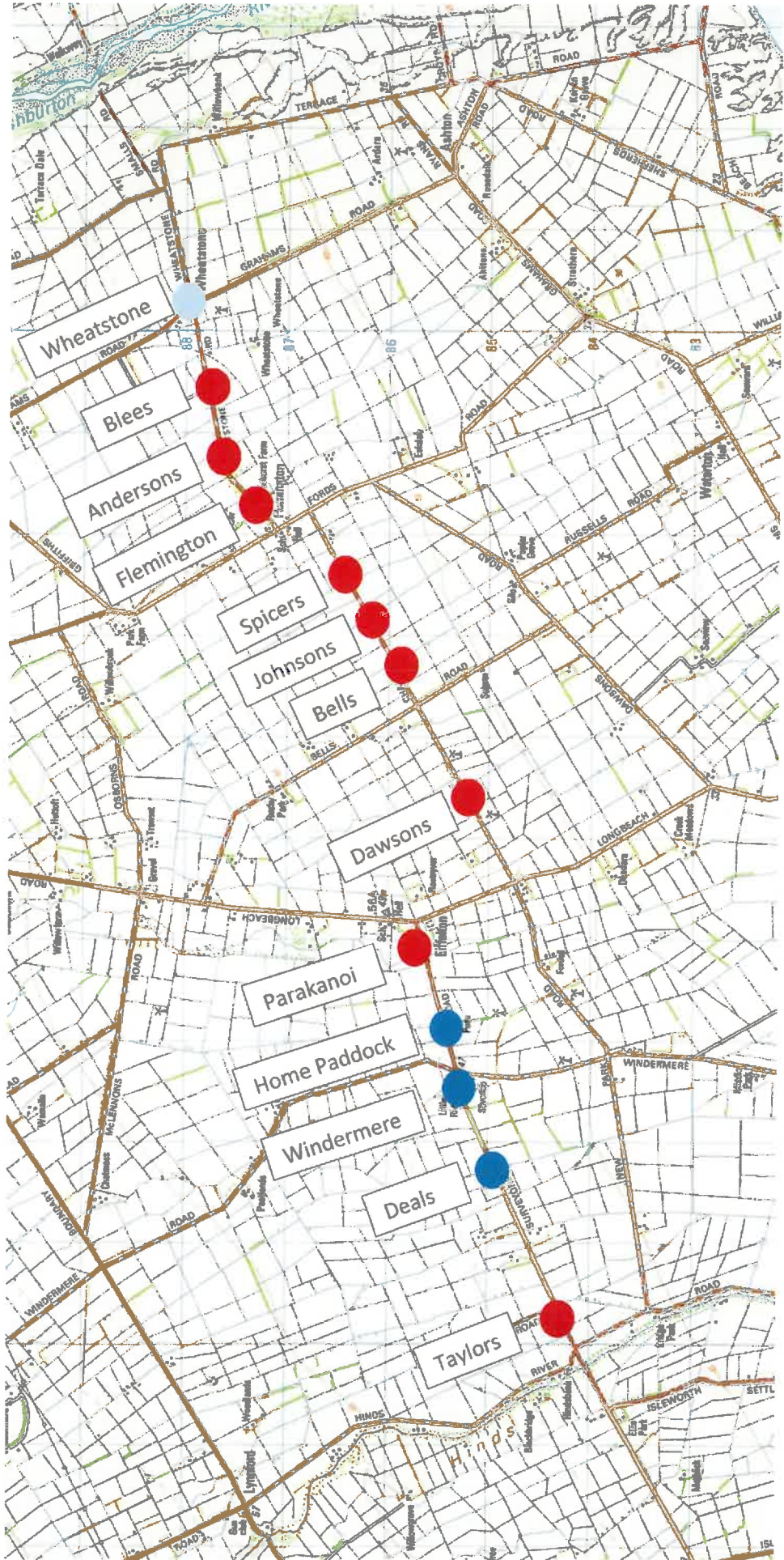


Figure 4. Drive-by survey of drains crossing Surveyors/Half Chain/Wheatstone roads on 20 March 2015. Red dots were dry drains, blue dots were drains with flow.



Taylors Drain 0 l/s ponded



Deals Drain 50 l/s



Windermere Drain 35 l/s



Home Paddock Drain 25 l/s



Parakanoi Drain dry



Dawsons Drain dry



Bells Drain dry



Johnsons Drain dry



Spicers Drain dry



Flemington Drain dry



Andersons Drain dry



Bleeps Drain dry



Wheatstone 0.25 l/s from side stream otherwise dry upstream

Figure 5. Photographs of drains surveyed on 20 March 2015. Photographs are ordered horizontally one row at a time in chronological order from south to north.