

## Proposed Canterbury Land and Water Regional Plan

Graeme Wilson – Vice President, Whitewater NZ &  
Conservation Officer, Whitewater Canoe Club

April 2013

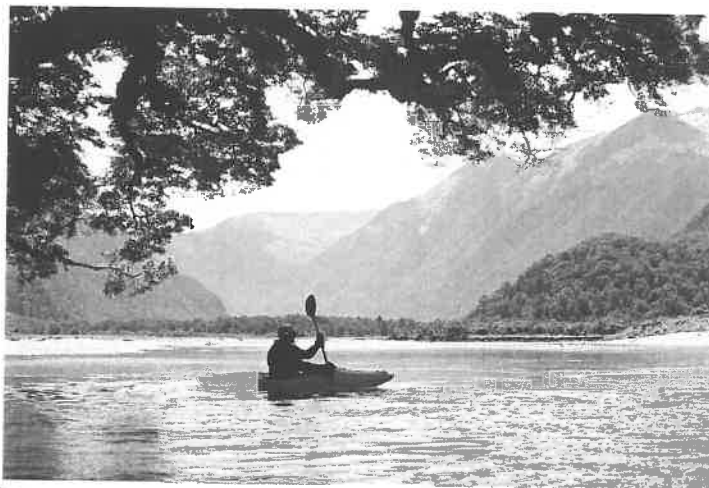
### Whitewater NZ and WWCC

- ▶ Whitewater NZ – formerly NZ Recreational Canoeing Association
- ▶ National body for kayaking and canoeing
- ▶ Principal activities are safety and advocacy
- ▶ Represent c 20 clubs and 1,000 members
- ▶ Affiliates include other clubs such as Arawa (Christchurch – around 600 members)
- ▶ Whitewater Canoe Club (WWCC) – c 200 members, 30+ years
- ▶ SPARC survey – 209,652 NZers kayaked during the one year survey period – on par with those who play netball
- ▶ DRKC (c 60), CPIT, NZ Defence Force, Schools, UCCC, individuals, most kayakers are not in clubs

## Whitewater – international scale

- ▶ Grade 1 – moving water, few riffles eg Avon
- ▶ Grade 2 – easy rapids with waves up to one metre eg lower Waimakariri
- ▶ Grade 3 – rapids with high irregular waves, drops and narrow passages – eg, parts of Hurunui (Maori Gully), Ashley gorge
- ▶ Grade 4 – difficult, experts only – eg, Rangitata gorge
- ▶ Grade 5 – very difficult, long and violent rapids
- ▶ Grade 6 – extreme, very dangerous

## Grade 1



## Grade 2



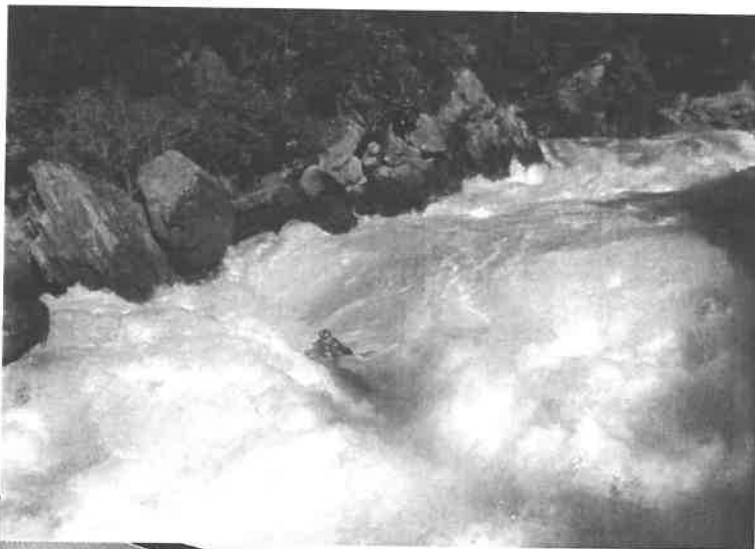
## Grade 3



## Grade 4



## Grade 5



## Waterway importance – our values

- ▶ Considerations of waterway importance include:
  - Whitewater value
  - Landscape value
  - Use value
  - Scarcity value
  - Status value

## Our issues

- ▶ Destruction of our “habitat”
  - Recreation/sporting organisations – we need our habitat to survive
  - Dams flood whole valleys and destroy rivers irreversibly. Internationally now many being dismantled (Europe, USA)
  - Diversions and “takes” reduce the flow to a trickle – for part or all of a river
  - Downstream of dams are flow controlled – not natural
  - We seek flows which are natural and variable – paddling in low flows, medium flows, freshes and floods provide different experiences
  - Water quality is getting worse
  - Access is often an issue

## **Our issues** (Contd)

- ▶ Rivers gone - in part or whole
  - Includes Waitaki, Pukaki, Tekapo, Ohau, Kawarau, Clutha, Waiau (Southland), Waikato
- ▶ Rivers with diminished flows
  - Includes Rangitata, Rakaia
- ▶ Rivers made dangerous with intake structures and river protection works (including willows) or polluted
  - Includes Waiau and Waimakariri
- ▶ Rivers threatened....hydro power, irrigation
  - Too many to mention

## **Our issues** (Contd)

- ▶ Non substitutability - one river is not the same as another river
- ▶ Complementarity of rivers
- ▶ Flat water kayaking is not a substitute for whitewater - or vice versa
- ▶ Non-whitewater mitigation is not mitigation
- ▶ Artificial courses can provide only limited mitigation
- ▶ Flow releases and flow regimes must consider recreational needs

## Strategies for protection

- ▶ Develop inventories – PCE and NZCA
- ▶ Develop conservation strategy which reflects our values

## Our future?

- ▶ The New Zealand Energy Strategy notes that over 80% of our country's hydro electricity generation resource has already been developed . New Zealand Energy Strategy, 2007, section 9.1.2
- ▶ Clarence is the only major river east of the Alps not modified
- ▶ Water is a renewable resource – our rivers are not
- ▶ Thank you.